

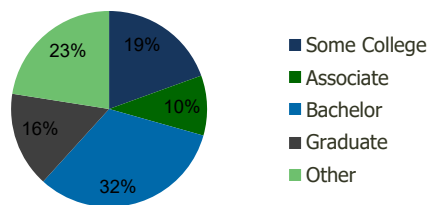
100240-Bayhill Plaza Orlando, FL	1.00 Mile Radius	3.00 Mile Radius	5.00 Mile Radius	10.00 Mile Radius
-------------------------------------	---------------------	---------------------	---------------------	----------------------

### Demographics (2020)

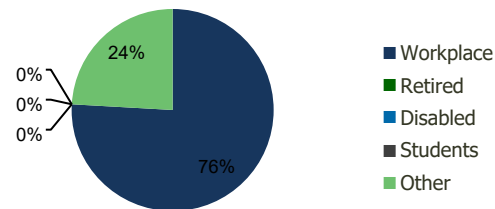
Current Population	7,303	58,485	185,661	726,565
Total Daytime Pop	38,443	139,836	339,823	1,036,792
Workplace Pop	29,796	106,130	202,824	553,604
Average Household Income	\$118,870	\$118,890	\$93,398	\$86,790
Median Household Income	\$84,309	\$74,257	\$58,680	\$58,544
Total Housing Units	2,978	22,194	70,960	267,741
Median Home Value	\$541,955	\$561,388	\$400,479	\$389,582
Bachelors Degree	33.6%	32.4%	27.5%	23.4%
Graduate Degree	21.7%	15.7%	12.4%	11.4%

### Projections (2025)

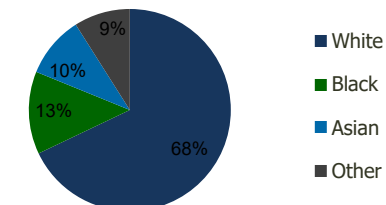
Projected Population	8,375	65,412	203,332	806,169
Projected 5 Year Pop Growth	2.8%	2.3%	1.8%	2.1%
Projected Households	3,420	24,903	78,084	297,484
Projected 5 Year Household Growth	2.8%	2.3%	1.9%	2.1%



Education (3-Mile)



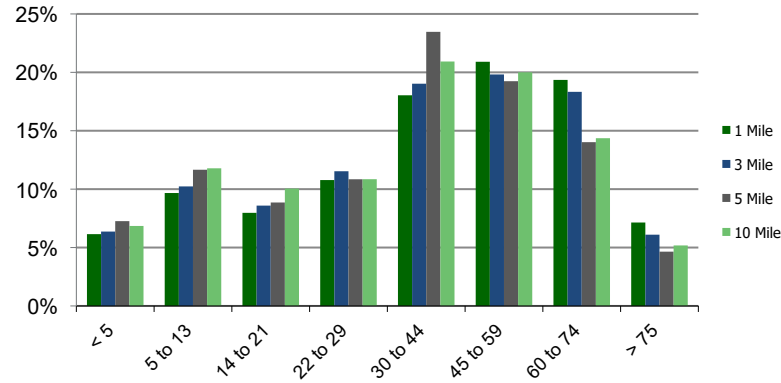
Daytime Population (3-Mile)



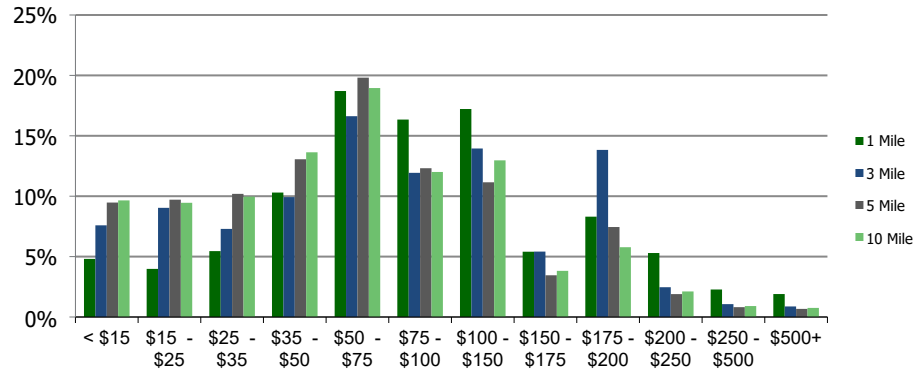
Ethnicity (3-Mile)

This report was produced using data from private and government sources deemed to be reliable and is herein provided without representation or warranty.

**Population by Age Range**



**Household Income by Income Range (\$000)**



**100240-Bayhill Plaza**  
Orlando, FL

1.00 Mile  
Radius

3.00 Mile  
Radius

5.00 Mile  
Radius

10.00 Mile  
Radius

	1.00 Mile Radius	3.00 Mile Radius	5.00 Mile Radius	10.00 Mile Radius
<b>Population</b>				
Current Estimated Population	7,303	58,485	185,661	726,565
2010 Census Population	5,054	44,826	147,997	574,496
2000 Census Population	4,446	38,232	113,391	458,077
Historical Annual Growth 2000 to 2010	1.29%	1.60%	2.70%	2.29%
Estimated Annual Growth 2010 to 2020	3.48%	2.51%	2.13%	2.21%
Projected Annual Growth 2020 to 2025	2.78%	2.26%	1.83%	2.10%
<b>Households</b>				
Current Estimated Households	2,978	22,194	70,960	267,741
2010 Census Households	2,049	16,822	55,573	210,278
2000 Census Households	1,656	13,676	42,853	169,401
Historical Annual Growth 2000 to 2010	2.2%	2.1%	2.6%	2.2%
Estimated Annual Growth 2010 to 2020	3.5%	2.6%	2.3%	2.3%
Projected Annual Growth 2020 to 2025	2.8%	2.3%	1.9%	2.1%
Population per Household	2.4	2.6	2.5	2.7
<b>Ethnicity</b>				
White	72.1%	67.9%	61.2%	59.5%
Black or African American	7.5%	13.2%	20.0%	23.9%
Asian & Pacific Islander	13.4%	9.9%	7.4%	5.8%
Other Races	7.0%	9.0%	11.3%	10.8%
Hispanic or Latino Population	16.0%	22.2%	28.0%	28.9%
Non Hispanic or Latino Population	84.0%	77.8%	72.0%	71.1%

This report was produced using data from private and government sources deemed to be reliable and is herein provided without representation or warranty.