

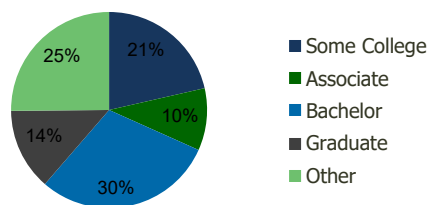
100240-Bayhill Plaza Orlando, FL	1.00 Mile Radius	3.00 Mile Radius	5.00 Mile Radius	10.00 Mile Radius
-------------------------------------	---------------------	---------------------	---------------------	----------------------

## Demographics (2019)

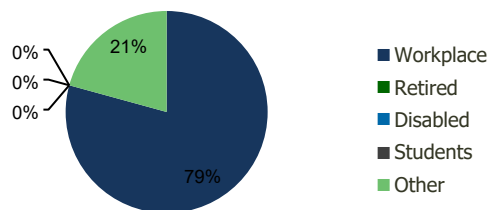
Current Population	6,802	56,476	185,934	736,422
Total Daytime Pop	38,440	136,816	331,713	1,010,848
Workplace Pop	30,807	108,439	203,207	559,604
Average Household Income	\$114,486	\$108,418	\$85,767	\$81,207
Median Household Income	\$82,782	\$67,916	\$54,856	\$55,413
Total Housing Units	2,778	21,468	71,080	271,375
Median Home Value	\$564,571	\$605,842	\$428,410	\$396,199
Bachelors Degree	32.5%	29.7%	25.5%	22.2%
Graduate Degree	15.4%	13.5%	11.1%	10.1%

## Projections (2024)

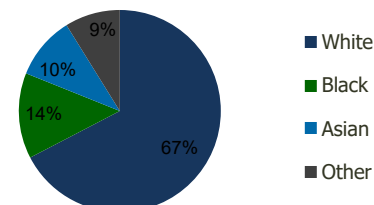
Projected Population	7,528	61,653	202,107	814,228
Projected 5 Year Pop Growth	2.0%	1.8%	1.7%	2.0%
Projected Households	3,078	23,544	77,672	300,463
Projected 5 Year Household Growth	2.1%	1.9%	1.8%	2.1%



Education (3-Mile)



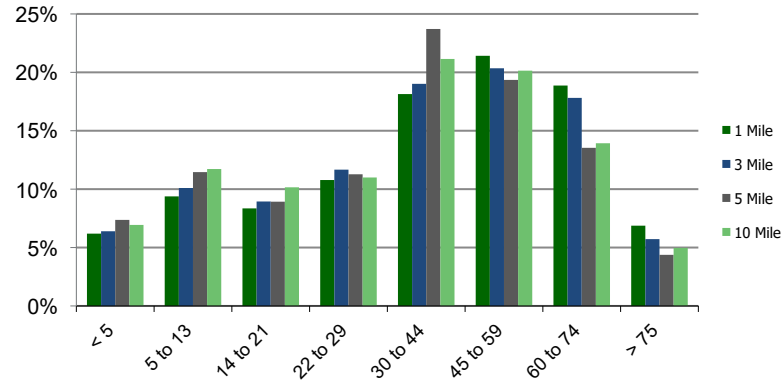
Daytime Population (3-Mile)



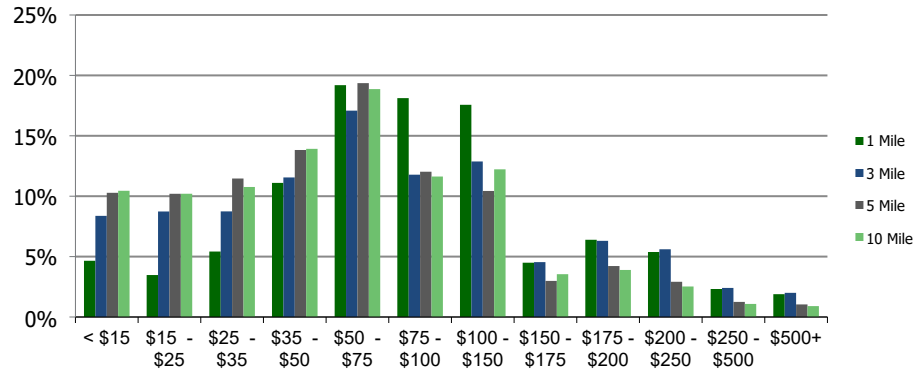
Ethnicity (3-Mile)

This report was produced using data from private and government sources deemed to be reliable and is herein provided without representation or warranty.

**Population by Age Range**



**Household Income by Income Range (\$000)**



**100240-Bayhill Plaza**  
Orlando, FL

1.00 Mile  
Radius

3.00 Mile  
Radius

5.00 Mile  
Radius

10.00 Mile  
Radius

	1.00 Mile Radius	3.00 Mile Radius	5.00 Mile Radius	10.00 Mile Radius
<b>Population</b>	Current Estimated Population	6,802	56,476	185,934
	2010 Census Population	5,054	44,826	147,997
	2000 Census Population	4,446	38,232	113,391
	Historical Annual Growth 2000 to 2010	1.29%	1.60%	2.70%
	Estimated Annual Growth 2010 to 2019	3.09%	2.40%	2.37%
	Projected Annual Growth 2019 to 2024	2.05%	1.77%	1.68%
<b>Households</b>	Current Estimated Households	2,778	21,468	71,080
	2010 Census Households	2,049	16,822	55,573
	2000 Census Households	1,656	13,676	42,853
	Historical Annual Growth 2000 to 2010	2.2%	2.1%	2.6%
	Estimated Annual Growth 2010 to 2019	3.2%	2.5%	2.6%
	Projected Annual Growth 2019 to 2024	2.1%	1.9%	1.8%
	Population per Household	2.4	2.6	2.5
<b>Ethnicity</b>	White	72.3%	67.4%	60.9%
	Black or African American	8.5%	13.7%	20.6%
	Asian & Pacific Islander	12.1%	10.1%	7.5%
	Other Races	7.1%	8.8%	11.0%
	Hispanic or Latino Population	15.2%	20.7%	26.6%
	Non Hispanic or Latino Population	84.8%	79.3%	73.4%

This report was produced using data from private and government sources deemed to be reliable and is herein provided without representation or warranty.