

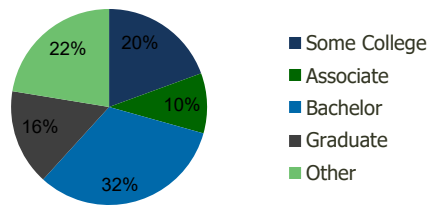
100240-Bayhill Plaza Orlando, FL	1.00 Mile Radius	3.00 Mile Radius	5.00 Mile Radius	10.00 Mile Radius
-------------------------------------	---------------------	---------------------	---------------------	----------------------

## Demographics (2021)

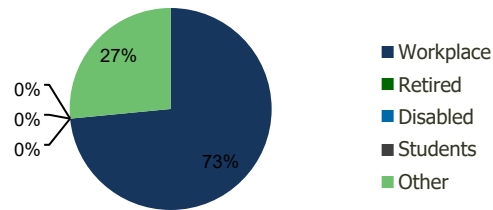
Current Population	7,555	59,756	189,127	749,268
Total Daytime Pop	34,131	123,894	307,503	949,930
Workplace Pop	25,617	91,029	174,607	481,246
Average Household Income	\$124,129	\$122,809	\$96,312	\$89,878
Median Household Income	\$88,488	\$77,189	\$60,479	\$60,874
Total Housing Units	3,085	22,686	72,188	275,934
Median Home Value	\$612,484	\$641,600	\$460,492	\$455,064
Bachelors Degree	33.6%	32.4%	27.5%	23.5%
Graduate Degree	21.7%	15.8%	12.4%	11.4%

## Projections (2026)

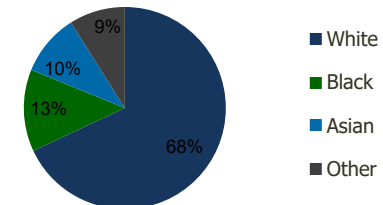
Projected Population	8,427	64,868	201,121	811,239
Projected 5 Year Pop Growth	2.2%	1.7%	1.2%	1.6%
Projected Households	3,446	24,704	77,015	298,885
Projected 5 Year Household Growth	2.2%	1.7%	1.3%	1.6%



Education (3-Mile)



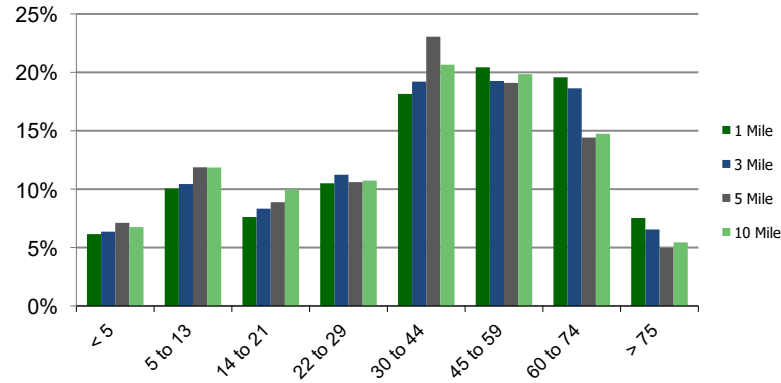
Daytime Population (3-Mile)



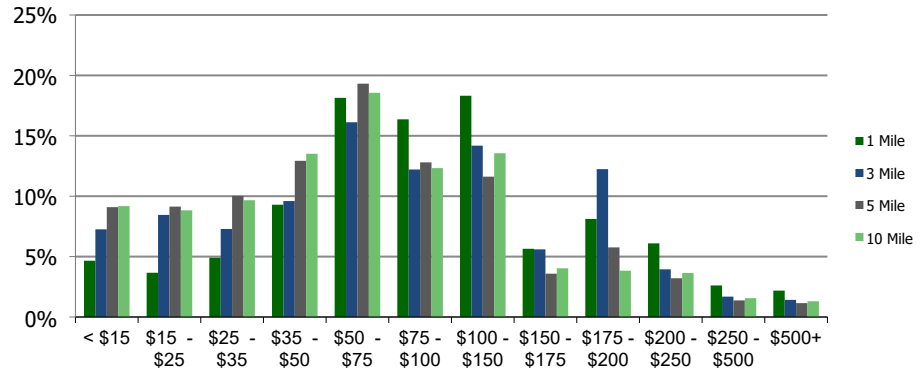
Ethnicity (3-Mile)

This report was produced using data from private and government sources deemed to be reliable and is herein provided without representation or warranty.

**Population by Age Range**



**Household Income by Income Range (\$000)**



**100240-Bayhill Plaza**  
Orlando, FL

1.00 Mile  
Radius

3.00 Mile  
Radius

5.00 Mile  
Radius

10.00 Mile  
Radius

	1.00 Mile Radius	3.00 Mile Radius	5.00 Mile Radius	10.00 Mile Radius
<b>Population</b>	Current Estimated Population	7,555	59,756	189,127
	2010 Census Population	5,054	44,826	147,997
	2000 Census Population	4,446	38,232	113,391
	Historical Annual Growth 2000 to 2010	1.29%	1.60%	2.70%
	Estimated Annual Growth 2010 to 2020	3.48%	2.48%	2.11%
	Projected Annual Growth 2020 to 2025	2.21%	1.66%	1.24%
<b>Households</b>	Current Estimated Households	3,085	22,686	72,188
	2010 Census Households	2,049	16,822	55,573
	2000 Census Households	1,656	13,676	42,853
	Historical Annual Growth 2000 to 2010	2.2%	2.1%	2.6%
	Estimated Annual Growth 2010 to 2020	3.5%	2.6%	2.3%
	Projected Annual Growth 2020 to 2025	2.2%	1.7%	1.3%
	Population per Household	2.4	2.6	2.5
<b>Ethnicity</b>	White	72.1%	68.0%	61.3%
	Black or African American	7.4%	13.1%	19.9%
	Asian & Pacific Islander	13.5%	9.9%	7.5%
	Other Races	7.0%	9.0%	11.3%
	Hispanic or Latino Population	16.0%	22.1%	28.1%
	Non Hispanic or Latino Population	84.0%	77.9%	71.9%

This report was produced using data from private and government sources deemed to be reliable and is herein provided without representation or warranty.