

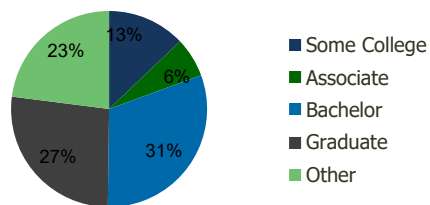
110380-Brandywine Commons II Wilmington, DE	1.00 Mile Radius	3.00 Mile Radius	5.00 Mile Radius	10.00 Mile Radius
------------------------------------------------	---------------------	---------------------	---------------------	----------------------

Demographics (2020)

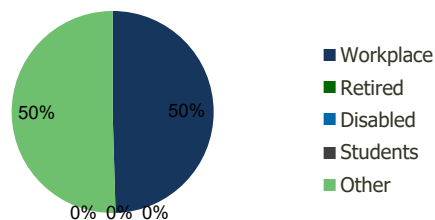
Current Population	4,242	43,979	138,390	502,254
Total Daytime Pop	12,523	48,249	149,355	587,065
Workplace Pop	7,921	23,901	68,427	263,855
Average Household Income	\$139,415	\$136,428	\$118,539	\$105,299
Median Household Income	\$108,945	\$108,082	\$85,754	\$74,738
Total Housing Units	1,662	17,447	57,902	191,804
Median Home Value	\$421,308	\$411,536	\$364,884	\$310,915
Bachelors Degree	33.4%	30.8%	26.8%	22.4%
Graduate Degree	27.2%	26.8%	22.6%	17.2%

Projections (2025)

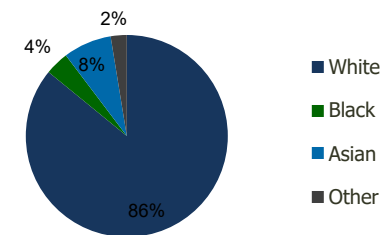
Projected Population	4,243	44,607	141,066	512,147
Projected 5 Year Pop Growth	0.0%	0.3%	0.4%	0.4%
Projected Households	1,662	17,708	59,004	195,746
Projected 5 Year Household Growth	0.0%	0.3%	0.4%	0.4%



Education (3-Mile)



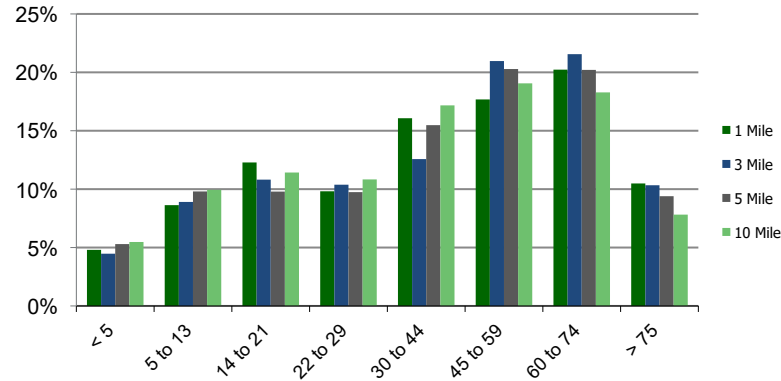
Daytime Population (3-Mile)



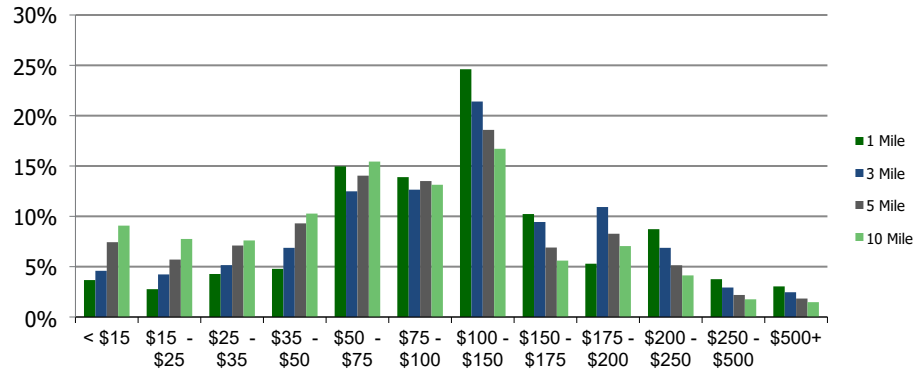
Ethnicity (3-Mile)

This report was produced using data from private and government sources deemed to be reliable and is herein provided without representation or warranty.

Population by Age Range



Household Income by Income Range (\$000)



110380-Brandywine Commons II
Wilmington, DE

1.00 Mile Radius

3.00 Mile Radius

5.00 Mile Radius

10.00 Mile Radius

	1.00 Mile Radius	3.00 Mile Radius	5.00 Mile Radius	10.00 Mile Radius
Population				
Current Estimated Population	4,242	43,979	138,390	502,254
2010 Census Population	4,254	43,158	134,586	492,079
2000 Census Population	4,024	39,472	128,583	474,069
Historical Annual Growth 2000 to 2010	0.56%	0.90%	0.46%	0.37%
Estimated Annual Growth 2010 to 2020	-0.03%	0.18%	0.26%	0.19%
Projected Annual Growth 2020 to 2025	0.00%	0.28%	0.38%	0.39%
Households				
Current Estimated Households	1,662	17,447	57,902	191,804
2010 Census Households	1,666	17,087	56,303	187,517
2000 Census Households	1,524	15,277	53,018	180,106
Historical Annual Growth 2000 to 2010	0.9%	1.1%	0.6%	0.4%
Estimated Annual Growth 2010 to 2020	0.0%	0.2%	0.3%	0.2%
Projected Annual Growth 2020 to 2025	0.0%	0.3%	0.4%	0.4%
Population per Household	2.4	2.5	2.4	2.5
Ethnicity				
White	81.6%	85.9%	72.4%	70.1%
Black or African American	4.3%	3.8%	18.8%	21.1%
Asian & Pacific Islander	12.3%	7.7%	5.8%	3.7%
Other Races	1.8%	2.6%	3.0%	5.1%
Hispanic or Latino Population	1.8%	2.2%	3.2%	8.4%
Non Hispanic or Latino Population	98.2%	97.8%	96.8%	91.6%

This report was produced using data from private and government sources deemed to be reliable and is herein provided without representation or warranty.