

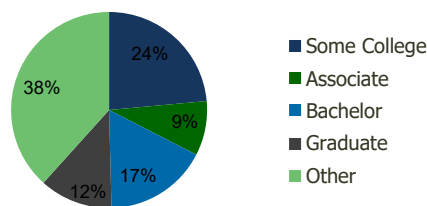
110890-Camden Square Dover, DE	1.00 Mile Radius	3.00 Mile Radius	5.00 Mile Radius	10.00 Mile Radius
-----------------------------------	---------------------	---------------------	---------------------	----------------------

Demographics (2020)

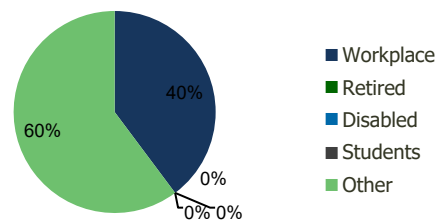
Current Population	6,250	34,706	79,803	124,375
Total Daytime Pop	7,478	40,350	102,178	138,238
Workplace Pop	2,585	16,052	42,919	51,481
Average Household Income	\$80,392	\$76,330	\$75,100	\$75,438
Median Household Income	\$68,575	\$62,012	\$59,884	\$60,356
Total Housing Units	2,344	12,915	29,756	46,209
Median Home Value	\$244,823	\$241,284	\$237,114	\$232,116
Bachelors Degree	20.3%	17.1%	15.9%	14.9%
Graduate Degree	12.8%	12.1%	12.2%	10.3%

Projections (2025)

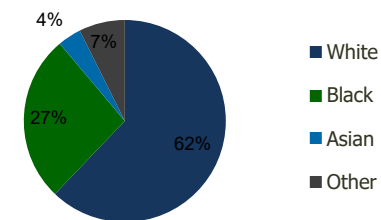
Projected Population	6,357	35,706	82,362	128,469
Projected 5 Year Pop Growth	0.3%	0.6%	0.6%	0.6%
Projected Households	2,383	13,276	30,682	47,700
Projected 5 Year Household Growth	0.3%	0.6%	0.6%	0.6%



Education (3-Mile)



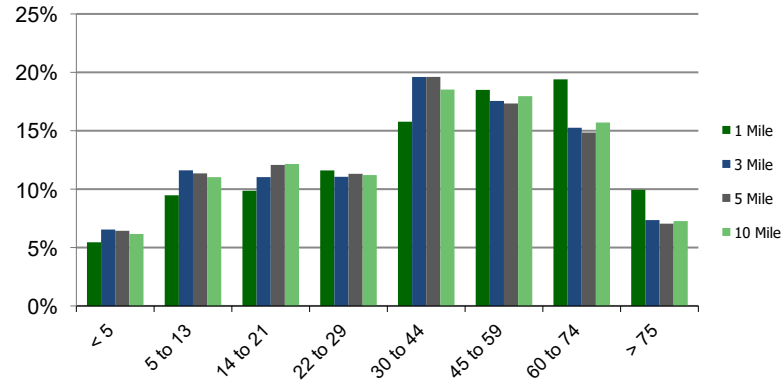
Daytime Population (3-Mile)



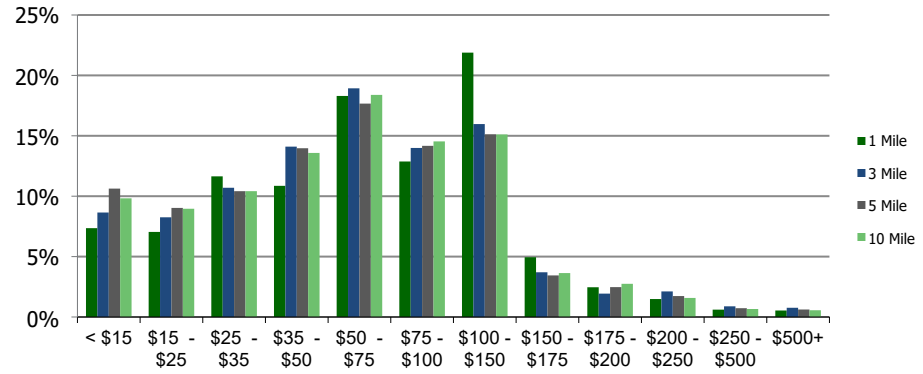
Ethnicity (3-Mile)

This report was produced using data from private and government sources deemed to be reliable and is herein provided without representation or warranty.

Population by Age Range



Household Income by Income Range (\$000)



110890-Camden Square
Dover, DE

1.00 Mile
Radius

3.00 Mile
Radius

5.00 Mile
Radius

10.00 Mile
Radius

	1.00 Mile Radius	3.00 Mile Radius	5.00 Mile Radius	10.00 Mile Radius
Population	Current Estimated Population	6,250	34,706	79,803
	2010 Census Population	6,053	31,686	72,124
	2000 Census Population	4,781	24,733	57,976
	Historical Annual Growth 2000 to 2010	2.39%	2.51%	2.21%
	Estimated Annual Growth 2010 to 2020	0.30%	0.85%	0.95%
	Projected Annual Growth 2020 to 2025	0.34%	0.57%	0.63%
Households	Current Estimated Households	2,344	12,915	29,756
	2010 Census Households	2,273	11,801	26,949
	2000 Census Households	1,804	9,117	21,694
	Historical Annual Growth 2000 to 2010	2.3%	2.6%	2.2%
	Estimated Annual Growth 2010 to 2020	0.3%	0.8%	0.9%
	Projected Annual Growth 2020 to 2025	0.3%	0.6%	0.6%
	Population per Household	2.7	2.7	2.6
Ethnicity	White	64.2%	62.2%	58.7%
	Black or African American	26.2%	26.7%	30.9%
	Asian & Pacific Islander	3.4%	3.8%	3.2%
	Other Races	6.2%	7.4%	7.2%
	Hispanic or Latino Population	5.7%	7.5%	7.5%
	Non Hispanic or Latino Population	94.3%	92.5%	92.5%

This report was produced using data from private and government sources deemed to be reliable and is herein provided without representation or warranty.