

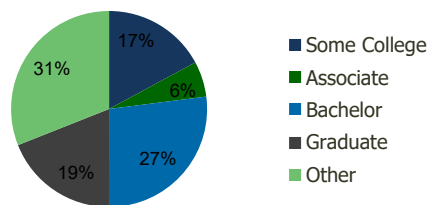
114420-Brookvale S.C. Fremont, CA	1.00 Mile Radius	3.00 Mile Radius	5.00 Mile Radius	10.00 Mile Radius
--------------------------------------	---------------------	---------------------	---------------------	----------------------

### Demographics (2021)

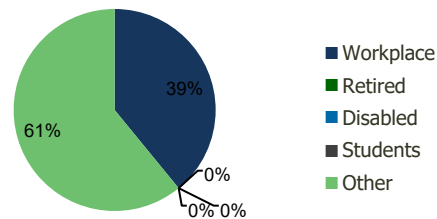
Current Population	27,518	212,215	344,814	686,870
Total Daytime Pop	20,187	175,332	300,625	680,527
Workplace Pop	3,364	68,516	127,082	275,501
Average Household Income	\$158,918	\$151,123	\$150,055	\$143,570
Median Household Income	\$134,833	\$128,952	\$126,343	\$115,711
Total Housing Units	8,894	67,820	111,280	220,342
Median Home Value	\$1,498,847	\$1,345,502	\$1,252,584	\$1,071,695
Bachelors Degree	26.2%	27.0%	26.5%	24.7%
Graduate Degree	19.1%	19.0%	19.1%	17.0%

### Projections (2026)

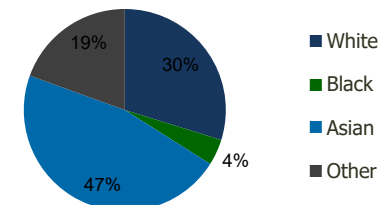
Projected Population	27,562	213,258	349,377	694,174
Projected 5 Year Pop Growth	0.0%	0.1%	0.3%	0.2%
Projected Households	8,903	68,169	112,927	222,801
Projected 5 Year Household Growth	0.0%	0.1%	0.3%	0.2%



Education (3-Mile)



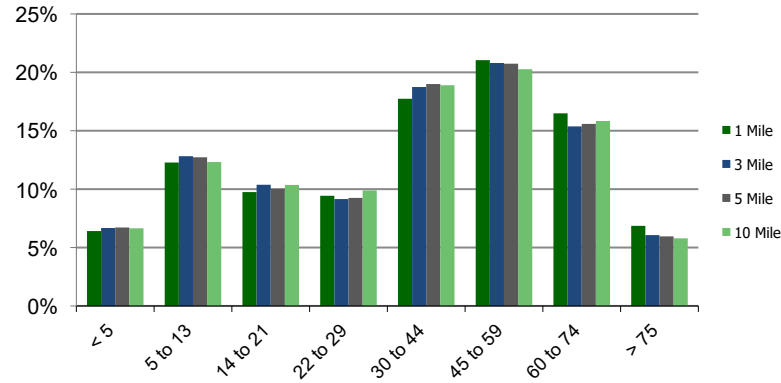
Daytime Population (3-Mile)



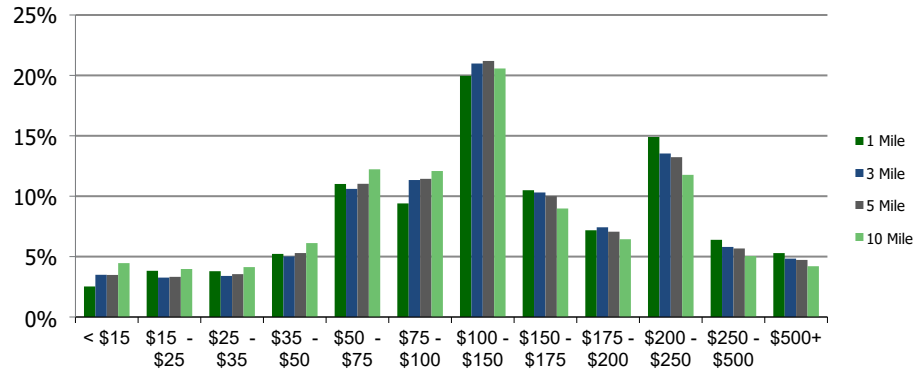
Ethnicity (3-Mile)

This report was produced using data from private and government sources deemed to be reliable and is herein provided without representation or warranty.

### Population by Age Range



### Household Income by Income Range (\$000)



<b>114420-Brookvale S.C.</b> Fremont, CA	1.00 Mile Radius	3.00 Mile Radius	5.00 Mile Radius	10.00 Mile Radius
---	------------------	------------------	------------------	-------------------

	1.00 Mile Radius	3.00 Mile Radius	5.00 Mile Radius	10.00 Mile Radius	
<b>Population</b>	Current Estimated Population	27,518	212,215	344,814	686,870
	2010 Census Population	25,185	194,600	308,104	622,875
	2000 Census Population	25,457	187,236	295,836	598,821
	Historical Annual Growth 2000 to 2010	-0.11%	0.39%	0.41%	0.39%
	Estimated Annual Growth 2010 to 2020	0.76%	0.74%	0.96%	0.84%
	Projected Annual Growth 2020 to 2025	0.03%	0.10%	0.26%	0.21%
<b>Households</b>	Current Estimated Households	8,894	67,820	111,280	220,342
	2010 Census Households	8,142	62,082	98,836	198,949
	2000 Census Households	8,171	59,823	95,084	192,913
	Historical Annual Growth 2000 to 2010	0.0%	0.4%	0.4%	0.3%
	Estimated Annual Growth 2010 to 2020	0.8%	0.8%	1.0%	0.9%
	Projected Annual Growth 2020 to 2025	0.0%	0.1%	0.3%	0.2%
	Population per Household	3.1	3.1	3.1	3.1
<b>Ethnicity</b>	White	32.7%	29.8%	29.1%	33.7%
	Black or African American	4.2%	4.2%	4.6%	6.7%
	Asian & Pacific Islander	46.9%	46.5%	46.9%	37.8%
	Other Races	16.2%	19.5%	19.4%	21.9%
	Hispanic or Latino Population	16.9%	21.5%	21.4%	27.4%
	Non Hispanic or Latino Population	83.1%	78.5%	78.6%	72.6%

This report was produced using data from private and government sources deemed to be reliable and is herein provided without representation or warranty.