

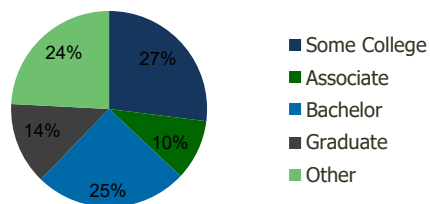
114460-Chico Crossroads Chico, CA	1.00 Mile Radius	3.00 Mile Radius	5.00 Mile Radius	10.00 Mile Radius
--------------------------------------	---------------------	---------------------	---------------------	----------------------

Demographics (2020)

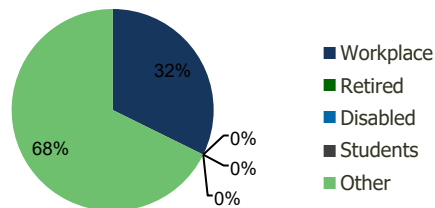
Current Population	9,476	60,681	96,885	114,291
Total Daytime Pop	13,342	97,881	127,986	145,881
Workplace Pop	6,918	31,603	43,101	47,991
Average Household Income	\$61,463	\$75,186	\$80,233	\$85,414
Median Household Income	\$44,812	\$52,326	\$56,317	\$59,476
Total Housing Units	3,659	24,148	39,091	45,981
Median Home Value	\$392,953	\$493,539	\$496,763	\$508,017
Bachelors Degree	21.4%	25.3%	24.5%	24.1%
Graduate Degree	7.2%	13.5%	13.0%	13.2%

Projections (2025)

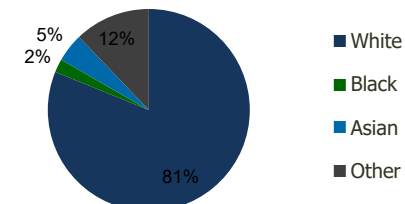
Projected Population	10,156	64,991	104,794	123,926
Projected 5 Year Pop Growth	1.4%	1.4%	1.6%	1.6%
Projected Households	3,934	25,939	42,391	49,959
Projected 5 Year Household Growth	1.5%	1.4%	1.6%	1.7%



Education (3-Mile)



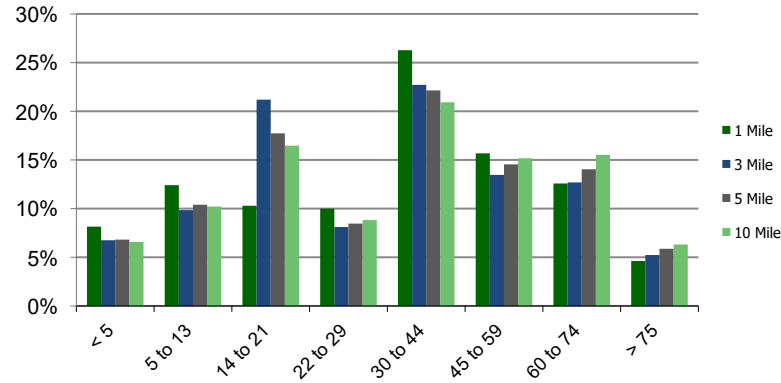
Daytime Population (3-Mile)



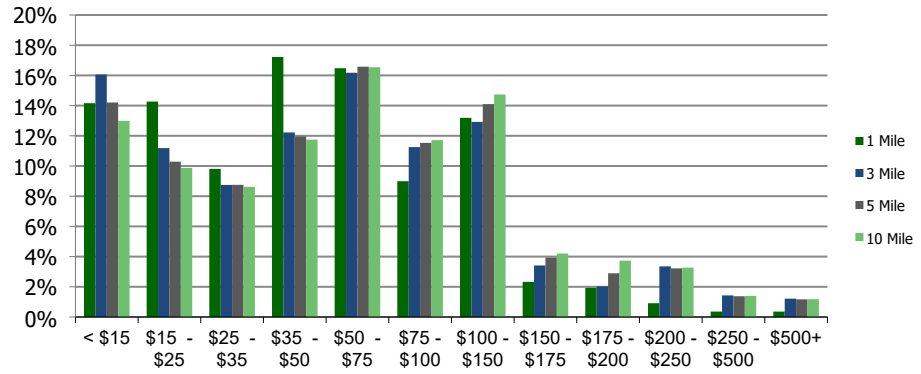
Ethnicity (3-Mile)

This report was produced using data from private and government sources deemed to be reliable and is herein provided without representation or warranty.

Population by Age Range



Household Income by Income Range (\$000)



114460-Chico Crossroads

Chico, CA

1.00 Mile Radius

3.00 Mile Radius

5.00 Mile Radius

10.00 Mile Radius

	1.00 Mile Radius	3.00 Mile Radius	5.00 Mile Radius	10.00 Mile Radius
Population	Current Estimated Population	9,476	60,681	96,885
	2010 Census Population	9,698	61,705	97,196
	2000 Census Population	9,343	56,868	87,857
	Historical Annual Growth 2000 to 2010	0.37%	0.82%	1.02%
	Estimated Annual Growth 2010 to 2020	-0.22%	-0.16%	-0.03%
	Projected Annual Growth 2020 to 2025	1.39%	1.38%	1.58%
Households	Current Estimated Households	3,659	24,148	39,091
	2010 Census Households	3,730	24,540	39,241
	2000 Census Households	3,525	22,378	35,048
	Historical Annual Growth 2000 to 2010	0.6%	0.9%	1.1%
	Estimated Annual Growth 2010 to 2020	-0.2%	-0.1%	0.0%
	Projected Annual Growth 2020 to 2025	1.5%	1.4%	1.6%
	Population per Household	2.5	2.4	2.4
Ethnicity	White	71.6%	81.2%	81.9%
	Black or African American	3.2%	2.1%	2.0%
	Asian & Pacific Islander	8.5%	4.6%	4.3%
	Other Races	16.6%	12.1%	11.8%
	Hispanic or Latino Population	23.9%	16.6%	16.2%
	Non Hispanic or Latino Population	76.1%	83.4%	83.8%

This report was produced using data from private and government sources deemed to be reliable and is herein provided without representation or warranty.