

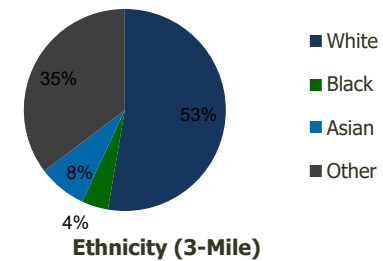
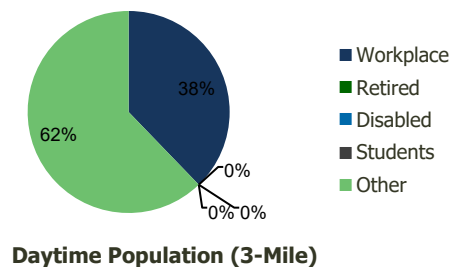
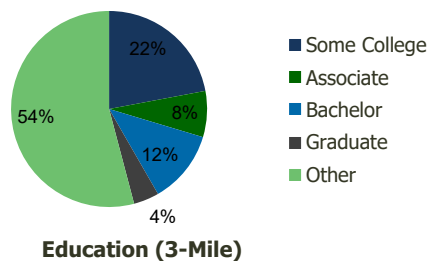
114060-Country Fair S.C. Chino, CA	1.00 Mile Radius	3.00 Mile Radius	5.00 Mile Radius	10.00 Mile Radius
---------------------------------------	---------------------	---------------------	---------------------	----------------------

Demographics (2020)

Current Population	18,722	196,226	463,970	1,048,900
Total Daytime Pop	18,610	176,277	490,354	1,202,696
Workplace Pop	8,145	66,606	200,196	464,974
Average Household Income	\$85,427	\$81,713	\$83,519	\$101,355
Median Household Income	\$70,469	\$66,649	\$67,372	\$80,771
Total Housing Units	5,925	52,333	126,997	310,716
Median Home Value	\$733,624	\$668,064	\$656,819	\$755,447
Bachelors Degree	12.2%	12.0%	14.3%	19.7%
Graduate Degree	6.0%	4.2%	6.1%	10.5%

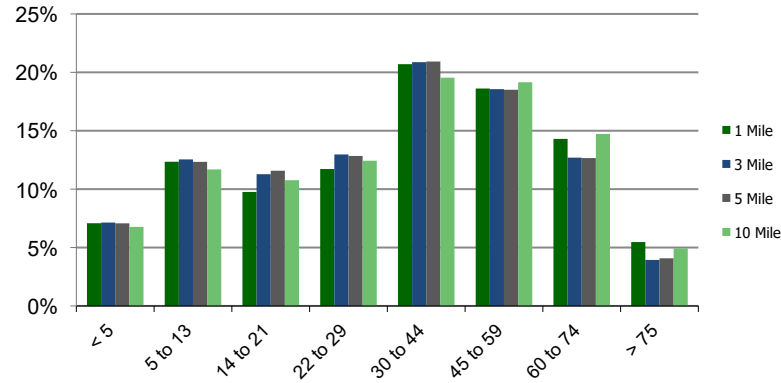
Projections (2025)

Projected Population	20,633	212,102	497,578	1,131,046
Projected 5 Year Pop Growth	2.0%	1.6%	1.4%	1.5%
Projected Households	6,531	56,676	136,497	334,660
Projected 5 Year Household Growth	2.0%	1.6%	1.5%	1.5%

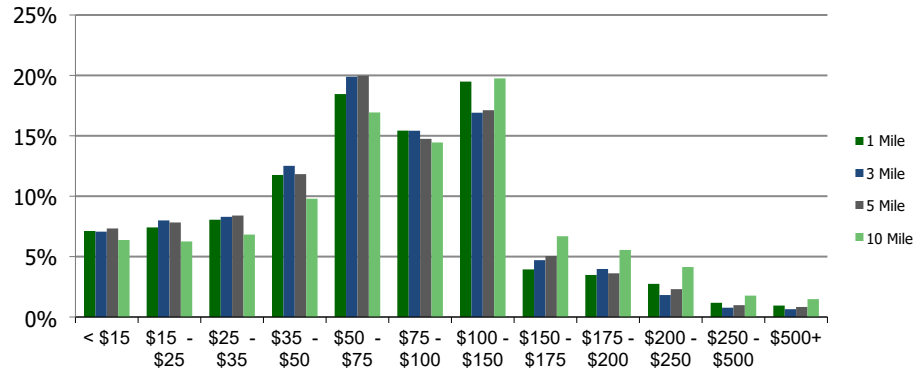


This report was produced using data from private and government sources deemed to be reliable and is herein provided without representation or warranty.

Population by Age Range



Household Income by Income Range (\$000)



114060-Country Fair S.C. Chino, CA	1.00 Mile Radius	3.00 Mile Radius	5.00 Mile Radius	10.00 Mile Radius
--	-------------------------	-------------------------	-------------------------	--------------------------

Population	Current Estimated Population	18,722	196,226	463,970	1,048,900
	2010 Census Population	16,268	179,232	427,985	955,003
	2000 Census Population	15,397	170,437	412,311	856,807
	Historical Annual Growth 2000 to 2010	0.55%	0.50%	0.37%	1.09%
	Estimated Annual Growth 2010 to 2020	1.32%	0.85%	0.75%	0.88%
	Projected Annual Growth 2020 to 2025	1.96%	1.57%	1.41%	1.52%
Households	Current Estimated Households	5,925	52,333	126,997	310,716
	2010 Census Households	5,180	47,635	116,710	283,417
	2000 Census Households	4,962	45,444	111,632	253,401
	Historical Annual Growth 2000 to 2010	0.4%	0.5%	0.4%	1.1%
	Estimated Annual Growth 2010 to 2020	1.3%	0.9%	0.8%	0.9%
	Projected Annual Growth 2020 to 2025	2.0%	1.6%	1.5%	1.5%
	Population per Household	3.1	3.7	3.6	3.3
Ethnicity	White	56.2%	52.7%	51.6%	53.5%
	Black or African American	4.7%	4.2%	5.2%	5.9%
	Asian & Pacific Islander	7.7%	7.7%	10.0%	15.4%
	Other Races	31.4%	35.3%	33.2%	25.1%
	Hispanic or Latino Population	59.4%	69.6%	64.1%	48.9%
	Non Hispanic or Latino Population	40.6%	30.4%	35.9%	51.1%

This report was produced using data from private and government sources deemed to be reliable and is herein provided without representation or warranty.