

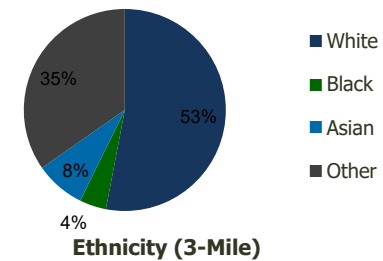
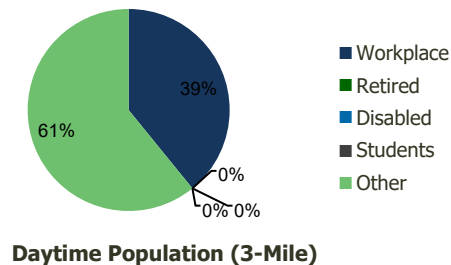
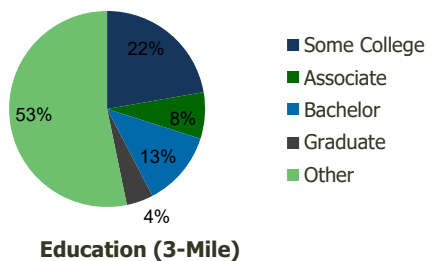
114050-Chino Town Square Chino, CA	1.00 Mile Radius	3.00 Mile Radius	5.00 Mile Radius	10.00 Mile Radius
---------------------------------------	---------------------	---------------------	---------------------	----------------------

## Demographics (2021)

Current Population	21,577	185,760	447,560	1,052,650
Total Daytime Pop	22,457	161,869	455,921	1,166,688
Workplace Pop	9,484	63,340	188,617	448,432
Average Household Income	\$85,034	\$84,887	\$85,121	\$103,000
Median Household Income	\$71,104	\$69,228	\$69,022	\$82,173
Total Housing Units	6,752	49,693	122,527	311,346
Median Home Value	\$860,226	\$822,902	\$787,054	\$891,402
Bachelors Degree	12.4%	12.4%	14.3%	19.4%
Graduate Degree	5.3%	4.4%	5.9%	10.4%

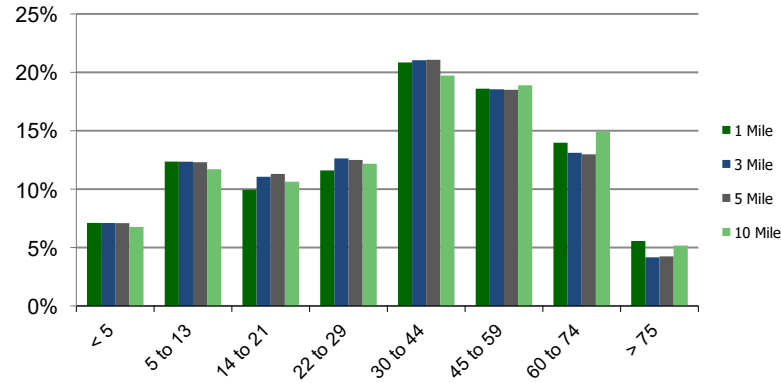
## Projections (2026)

Projected Population	23,274	200,134	476,953	1,122,946
Projected 5 Year Pop Growth	1.5%	1.5%	1.3%	1.3%
Projected Households	7,279	53,664	130,836	331,851
Projected 5 Year Household Growth	1.5%	1.5%	1.3%	1.3%

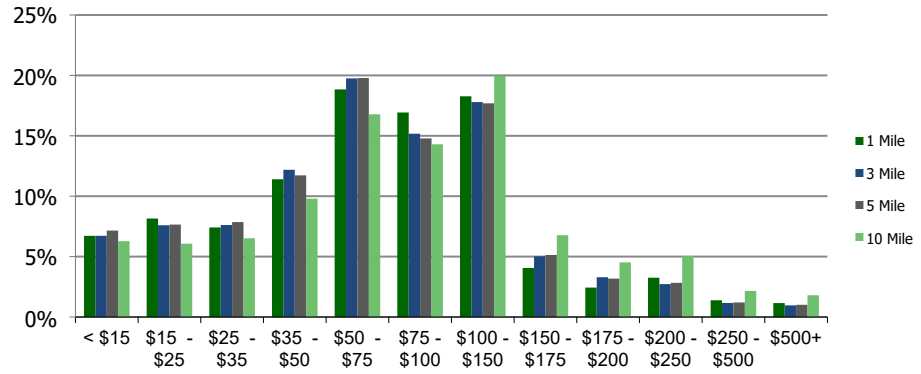


This report was produced using data from private and government sources deemed to be reliable and is herein provided without representation or warranty.

**Population by Age Range**



**Household Income by Income Range (\$000)**



<b>114050-Chino Town Square</b> Chino, CA	<b>1.00 Mile Radius</b>	<b>3.00 Mile Radius</b>	<b>5.00 Mile Radius</b>	<b>10.00 Mile Radius</b>
--	-------------------------	-------------------------	-------------------------	--------------------------

<b>Population</b>	Current Estimated Population	21,577	185,760	447,560	1,052,650
	2010 Census Population	19,304	167,562	410,301	956,454
	2000 Census Population	18,650	158,597	394,137	856,496
	Historical Annual Growth 2000 to 2010	0.35%	0.55%	0.40%	1.11%
	Estimated Annual Growth 2010 to 2020	0.95%	0.88%	0.74%	0.82%
	Projected Annual Growth 2020 to 2025	1.53%	1.50%	1.28%	1.30%
<b>Households</b>	Current Estimated Households	6,752	49,693	122,527	311,346
	2010 Census Households	6,058	44,643	111,888	283,318
	2000 Census Households	5,905	42,302	106,568	253,053
	Historical Annual Growth 2000 to 2010	0.3%	0.5%	0.5%	1.1%
	Estimated Annual Growth 2010 to 2020	0.9%	0.9%	0.8%	0.8%
	Projected Annual Growth 2020 to 2025	1.5%	1.5%	1.3%	1.3%
	Population per Household	3.2	3.7	3.6	3.3
<b>Ethnicity</b>	White	56.6%	53.0%	51.6%	53.7%
	Black or African American	4.6%	4.3%	5.2%	6.0%
	Asian & Pacific Islander	6.7%	8.0%	10.0%	15.0%
	Other Races	32.2%	34.7%	33.3%	25.3%
	Hispanic or Latino Population	61.5%	68.4%	64.3%	49.2%
	Non Hispanic or Latino Population	38.5%	31.6%	35.7%	50.8%

This report was produced using data from private and government sources deemed to be reliable and is herein provided without representation or warranty.