

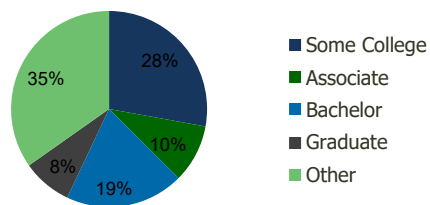
109910-Santee Trolley Square Santee, CA	1.00 Mile Radius	3.00 Mile Radius	5.00 Mile Radius	10.00 Mile Radius
--	---------------------	---------------------	---------------------	----------------------

Demographics (2020)

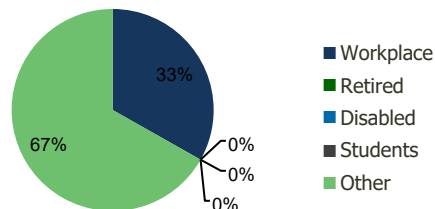
Current Population	11,786	103,036	270,461	822,543
Total Daytime Pop	18,410	126,323	277,789	936,695
Workplace Pop	10,060	41,921	90,722	348,642
Average Household Income	\$91,159	\$94,589	\$91,414	\$97,324
Median Household Income	\$74,803	\$77,941	\$71,961	\$75,003
Total Housing Units	4,312	37,604	98,644	294,965
Median Home Value	\$604,012	\$635,888	\$646,183	\$690,331
Bachelors Degree	20.4%	19.6%	18.0%	21.3%
Graduate Degree	9.5%	8.2%	9.4%	12.1%

Projections (2025)

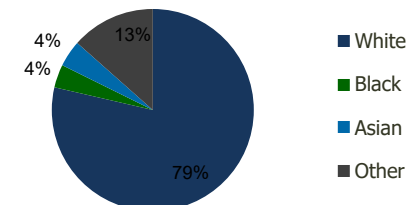
Projected Population	12,049	104,356	274,169	837,022
Projected 5 Year Pop Growth	0.4%	0.3%	0.3%	0.3%
Projected Households	4,417	38,113	100,036	300,654
Projected 5 Year Household Growth	0.5%	0.3%	0.3%	0.4%



Education (3-Mile)



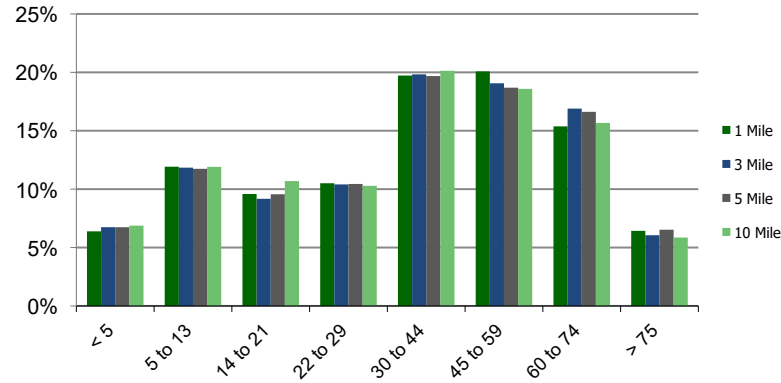
Daytime Population (3-Mile)



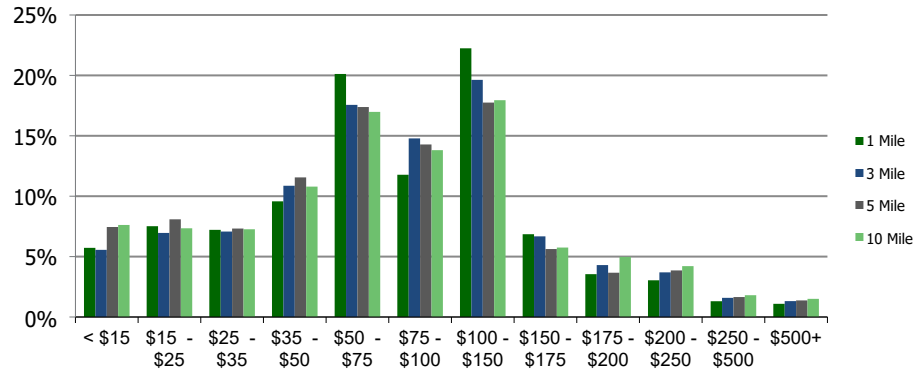
Ethnicity (3-Mile)

This report was produced using data from private and government sources deemed to be reliable and is herein provided without representation or warranty.

Population by Age Range



Household Income by Income Range (\$000)



109910-Santee Trolley Square

Santee, CA

1.00 Mile Radius

3.00 Mile Radius

5.00 Mile Radius

10.00 Mile Radius

	1.00 Mile Radius	3.00 Mile Radius	5.00 Mile Radius	10.00 Mile Radius
Population	Current Estimated Population	11,786	103,036	270,461
	2010 Census Population	11,023	99,210	259,241
	2000 Census Population	10,881	98,311	252,925
	Historical Annual Growth 2000 to 2010	0.13%	0.09%	0.25%
	Estimated Annual Growth 2010 to 2020	0.63%	0.35%	0.39%
	Projected Annual Growth 2020 to 2025	0.44%	0.25%	0.27%
Households	Current Estimated Households	4,312	37,604	98,644
	2010 Census Households	4,003	36,092	94,405
	2000 Census Households	3,809	35,190	93,295
	Historical Annual Growth 2000 to 2010	0.5%	0.3%	0.1%
	Estimated Annual Growth 2010 to 2020	0.7%	0.4%	0.4%
	Projected Annual Growth 2020 to 2025	0.5%	0.3%	0.3%
	Population per Household	2.6	2.7	2.7
Ethnicity	White	79.3%	78.6%	77.0%
	Black or African American	2.9%	3.7%	4.4%
	Asian & Pacific Islander	4.5%	4.2%	4.0%
	Other Races	13.3%	13.5%	14.6%
	Hispanic or Latino Population	19.7%	19.5%	22.1%
	Non Hispanic or Latino Population	80.3%	80.5%	77.9%

This report was produced using data from private and government sources deemed to be reliable and is herein provided without representation or warranty.