

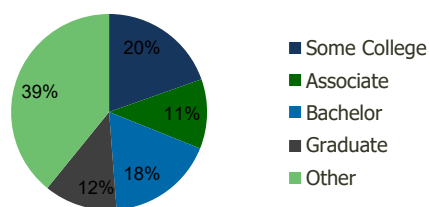
1651-Independence Plaza Selden, NY	1.00 Mile Radius	3.00 Mile Radius	5.00 Mile Radius	10.00 Mile Radius
---------------------------------------	---------------------	---------------------	---------------------	----------------------

## Demographics (2018)

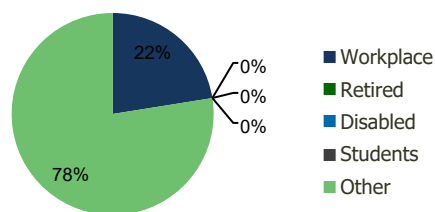
Current Population	14,129	101,445	243,570	599,862
Total Daytime Pop	20,903	111,088	281,230	693,562
Workplace Pop	3,447	24,968	109,246	293,213
Average Household Income	\$97,734	\$106,434	\$109,607	\$114,014
Median Household Income	\$87,010	\$91,238	\$91,952	\$92,107
Total Housing Units	4,486	33,453	81,021	202,508
Median Home Value	\$405,512	\$440,026	\$461,847	\$479,576
Bachelors Degree	16.2%	17.7%	18.9%	18.7%
Graduate Degree	8.3%	12.1%	14.7%	16.5%

## Projections (2023)

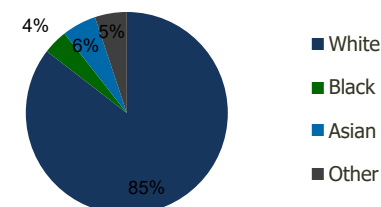
Projected Population	14,241	102,018	245,574	605,429
Projected 5 Year Pop Growth	0.2%	0.1%	0.2%	0.2%
Projected Households	4,521	33,649	81,722	204,481
Projected 5 Year Household Growth	0.2%	0.1%	0.2%	0.2%



Education (3-Mile)



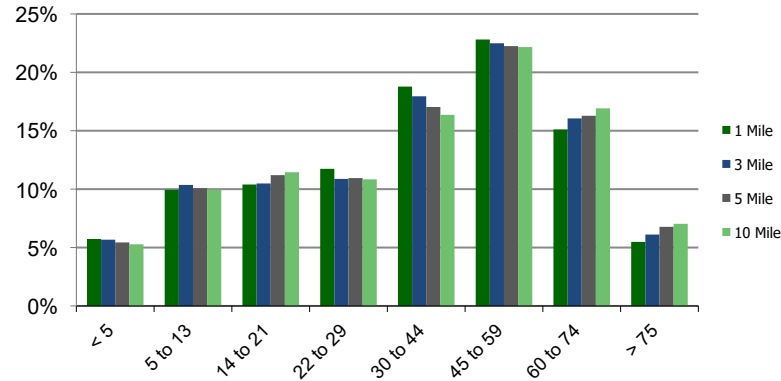
Daytime Population (3-Mile)



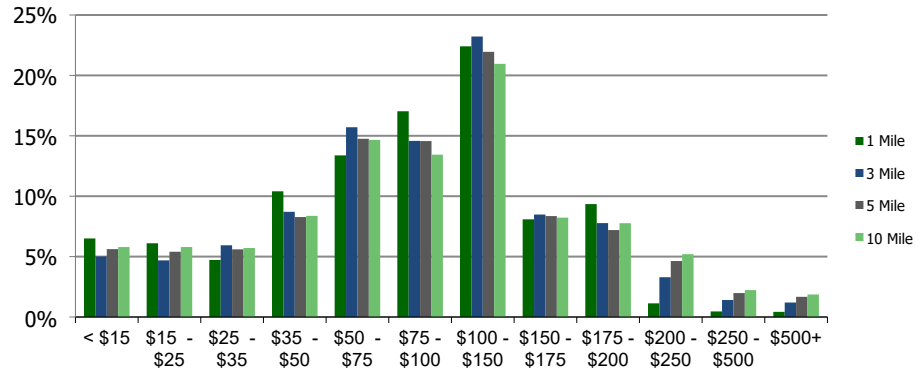
Ethnicity (3-Mile)

This report was produced using data from private and government sources deemed to be reliable and is herein provided without representation or warranty.

**Population by Age Range**



**Household Income by Income Range (\$000)**



**1651-Independence Plaza**  
Selden, NY

1.00 Mile Radius

3.00 Mile Radius

5.00 Mile Radius

10.00 Mile Radius

	1.00 Mile Radius	3.00 Mile Radius	5.00 Mile Radius	10.00 Mile Radius
<b>Population</b>	Current Estimated Population	14,129	101,445	243,570
	2010 Census Population	14,323	103,149	245,028
	2000 Census Population	14,281	97,962	231,193
	Historical Annual Growth 2000 to 2010	0.03%	0.52%	0.58%
	Estimated Annual Growth 2010 to 2012	-0.16%	-0.19%	-0.07%
	Projected Annual Growth 2012 to 2018	0.16%	0.11%	0.16%
<b>Households</b>	Current Estimated Households	4,486	33,453	81,021
	2010 Census Households	4,561	34,022	81,503
	2000 Census Households	4,395	31,074	74,297
	Historical Annual Growth 2000 to 2010	0.4%	0.9%	0.9%
	Estimated Annual Growth 2010 to 2012	-0.2%	-0.2%	-0.1%
	Projected Annual Growth 2012 to 2018	0.2%	0.1%	0.2%
	Population per Household	3.1	3.0	2.9
<b>Ethnicity</b>	White	85.0%	85.5%	84.8%
	Black or African American	3.2%	4.0%	5.0%
	Asian & Pacific Islander	6.2%	5.5%	5.4%
	Other Races	5.6%	5.1%	4.8%
	Hispanic or Latino Population	14.3%	13.4%	12.4%
	Non Hispanic or Latino Population	85.7%	86.6%	87.6%

This report was produced using data from private and government sources deemed to be reliable and is herein provided without representation or warranty.