

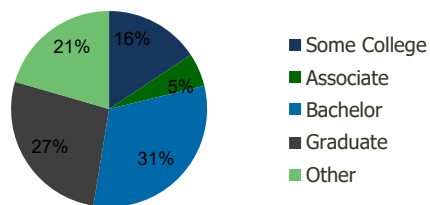
110770-Timonium Crossing Timonium, MD	1.00 Mile Radius	3.00 Mile Radius	5.00 Mile Radius	10.00 Mile Radius
--	---------------------	---------------------	---------------------	----------------------

Demographics (2020)

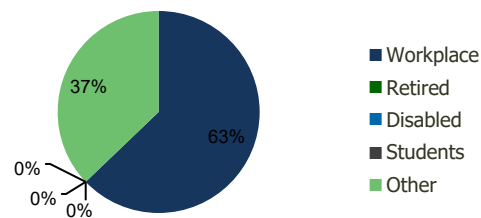
Current Population	8,597	74,109	148,178	836,665
Total Daytime Pop	18,292	130,246	277,198	1,042,002
Workplace Pop	12,557	81,852	160,168	469,926
Average Household Income	\$132,643	\$121,516	\$128,062	\$93,339
Median Household Income	\$109,747	\$84,020	\$89,461	\$65,729
Total Housing Units	3,456	31,827	60,628	336,482
Median Home Value	\$447,177	\$442,697	\$431,532	\$277,085
Bachelors Degree	33.7%	31.4%	31.7%	21.6%
Graduate Degree	27.5%	26.9%	29.4%	18.0%

Projections (2025)

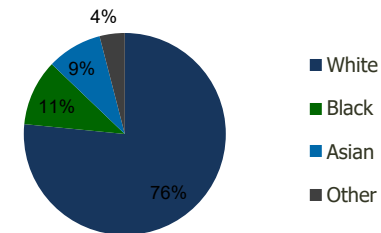
Projected Population	8,671	75,845	151,064	845,846
Projected 5 Year Pop Growth	0.2%	0.5%	0.4%	0.2%
Projected Households	3,486	32,709	62,037	340,807
Projected 5 Year Household Growth	0.2%	0.5%	0.5%	0.3%



Education (3-Mile)



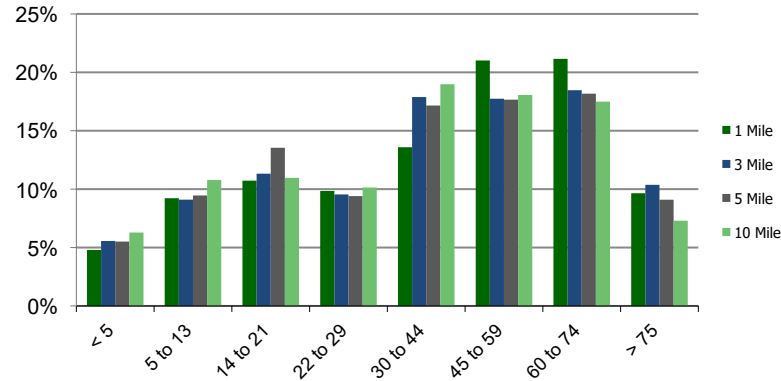
Daytime Population (3-Mile)



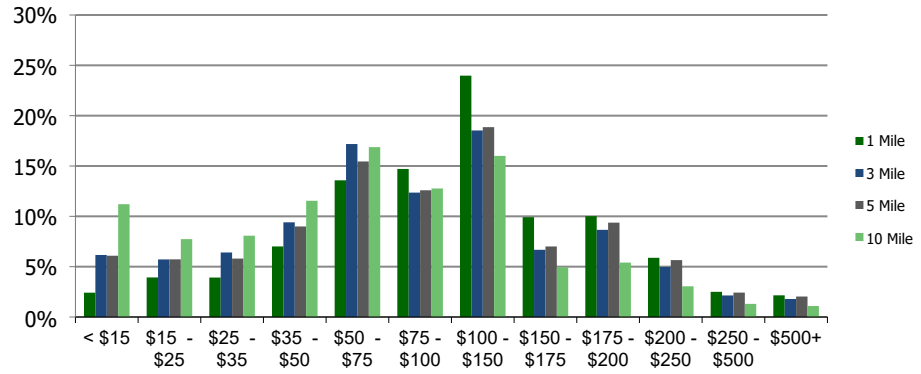
Ethnicity (3-Mile)

This report was produced using data from private and government sources deemed to be reliable and is herein provided without representation or warranty.

Population by Age Range



Household Income by Income Range (\$000)



110770-Timonium Crossing

Timonium, MD

1.00 Mile Radius

3.00 Mile Radius

5.00 Mile Radius

10.00 Mile Radius

	1.00 Mile Radius	3.00 Mile Radius	5.00 Mile Radius	10.00 Mile Radius
Population				
Current Estimated Population	8,597	74,109	148,178	836,665
2010 Census Population	8,449	70,683	143,264	850,443
2000 Census Population	8,268	66,206	135,448	843,144
Historical Annual Growth 2000 to 2010	0.22%	0.66%	0.56%	0.09%
Estimated Annual Growth 2010 to 2020	0.16%	0.44%	0.31%	-0.15%
Projected Annual Growth 2020 to 2025	0.17%	0.46%	0.39%	0.22%
Households				
Current Estimated Households	3,456	31,827	60,628	336,482
2010 Census Households	3,401	29,964	58,041	340,696
2000 Census Households	3,491	28,982	56,831	339,073
Historical Annual Growth 2000 to 2010	-0.3%	0.3%	0.2%	0.0%
Estimated Annual Growth 2010 to 2020	0.1%	0.6%	0.4%	-0.1%
Projected Annual Growth 2020 to 2025	0.2%	0.5%	0.5%	0.3%
Population per Household	2.5	2.2	2.3	2.4
Ethnicity				
White	83.8%	76.6%	76.8%	45.0%
Black or African American	2.9%	10.6%	11.8%	47.0%
Asian & Pacific Islander	10.7%	8.8%	7.7%	4.3%
Other Races	2.6%	4.0%	3.7%	3.6%
Hispanic or Latino Population	2.6%	5.6%	4.7%	3.7%
Non Hispanic or Latino Population	97.4%	94.4%	95.3%	96.3%

This report was produced using data from private and government sources deemed to be reliable and is herein provided without representation or warranty.