

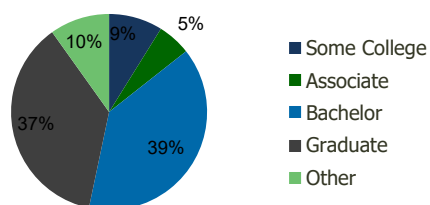
116880-Wilton River Park S.C. Wilton, CT	1.00 Mile Radius	3.00 Mile Radius	5.00 Mile Radius	10.00 Mile Radius
---	---------------------	---------------------	---------------------	----------------------

Demographics (2019)

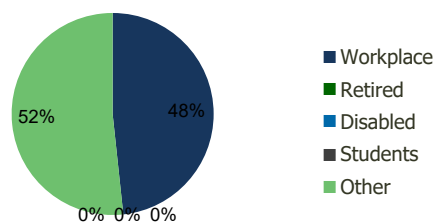
Current Population	2,834	22,262	82,659	321,046
Total Daytime Pop	7,114	32,715	84,466	351,625
Workplace Pop	5,919	15,806	39,161	144,821
Average Household Income	\$205,484	\$254,138	\$219,401	\$208,315
Median Household Income	\$133,123	\$171,457	\$139,200	\$131,998
Total Housing Units	1,148	7,971	30,419	116,312
Median Home Value	\$764,153	\$857,790	\$757,339	\$736,198
Bachelors Degree	37.3%	38.9%	34.1%	33.1%
Graduate Degree	33.9%	36.8%	31.0%	28.5%

Projections (2023)

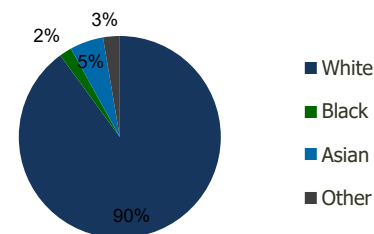
Projected Population	2,863	22,439	83,497	323,529
Projected 5 Year Pop Growth	0.2%	0.2%	0.2%	0.2%
Projected Households	1,159	8,043	30,746	117,268
Projected 5 Year Household Growth	0.2%	0.2%	0.2%	0.2%



Education (3-Mile)



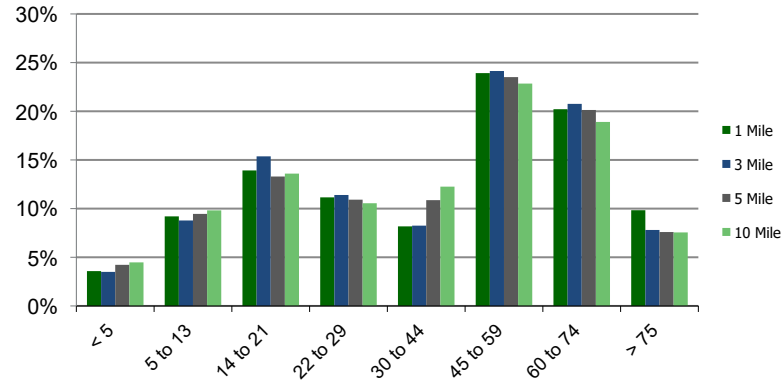
Daytime Population (3-Mile)



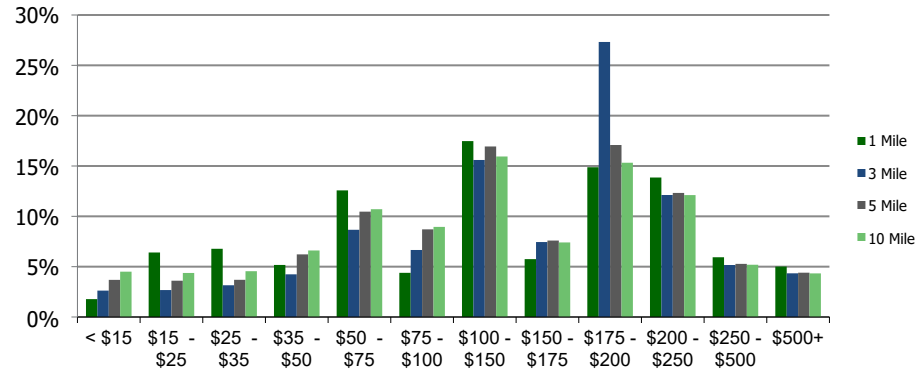
Ethnicity (3-Mile)

This report was produced using data from private and government sources deemed to be reliable and is herein provided without representation or warranty.

Population by Age Range



Household Income by Income Range (\$000)



116880-Wilton River Park S.C.
Wilton, CT

1.00 Mile
Radius

3.00 Mile
Radius

5.00 Mile
Radius

10.00 Mile
Radius

	1.00 Mile Radius	3.00 Mile Radius	5.00 Mile Radius	10.00 Mile Radius
Population	Current Estimated Population	2,834	22,262	82,659
	2010 Census Population	2,702	21,448	79,913
	2000 Census Population	2,668	20,842	77,814
	Historical Annual Growth 2000 to 2010	0.13%	0.29%	0.27%
	Estimated Annual Growth 2010 to 2012	0.49%	0.38%	0.35%
	Projected Annual Growth 2012 to 2019	0.20%	0.16%	0.20%
Households	Current Estimated Households	1,148	7,971	30,419
	2010 Census Households	1,097	7,660	29,353
	2000 Census Households	1,044	7,237	28,475
	Historical Annual Growth 2000 to 2010	0.5%	0.6%	0.3%
	Estimated Annual Growth 2010 to 2012	0.5%	0.4%	0.4%
	Projected Annual Growth 2012 to 2019	0.2%	0.2%	0.2%
	Population per Household	2.4	2.8	2.7
Ethnicity	White	89.3%	90.0%	87.3%
	Black or African American	1.6%	2.0%	4.1%
	Asian & Pacific Islander	6.5%	5.4%	4.7%
	Other Races	2.6%	2.7%	3.9%
	Hispanic or Latino Population	3.7%	3.8%	8.7%
	Non Hispanic or Latino Population	96.3%	96.2%	91.3%

This report was produced using data from private and government sources deemed to be reliable and is herein provided without representation or warranty.