

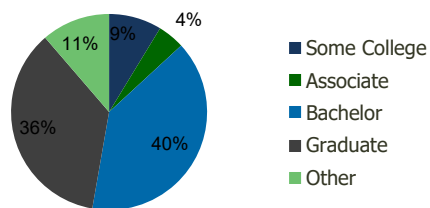
116880-Wilton River Park S.C. Wilton, CT	1.00 Mile Radius	3.00 Mile Radius	5.00 Mile Radius	10.00 Mile Radius
---	---------------------	---------------------	---------------------	----------------------

## Demographics (2020)

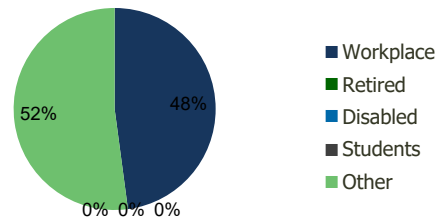
Current Population	2,806	22,210	83,280	320,973
Total Daytime Pop	6,891	32,186	85,316	353,065
Workplace Pop	5,705	15,415	38,772	144,080
Average Household Income	\$213,106	\$260,418	\$224,687	\$214,593
Median Household Income	\$143,665	\$175,195	\$146,434	\$136,896
Total Housing Units	1,137	7,963	30,691	116,312
Median Home Value	\$697,813	\$743,806	\$654,846	\$635,180
Bachelors Degree	39.1%	39.6%	34.7%	34.3%
Graduate Degree	31.7%	35.9%	31.2%	29.1%

## Projections (2025)

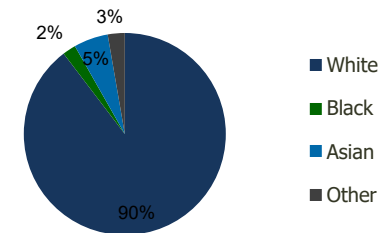
Projected Population	2,807	22,282	83,802	322,450
Projected 5 Year Pop Growth	0.0%	0.1%	0.1%	0.1%
Projected Households	1,135	8,000	30,905	116,929
Projected 5 Year Household Growth	0.0%	0.1%	0.1%	0.1%



Education (3-Mile)



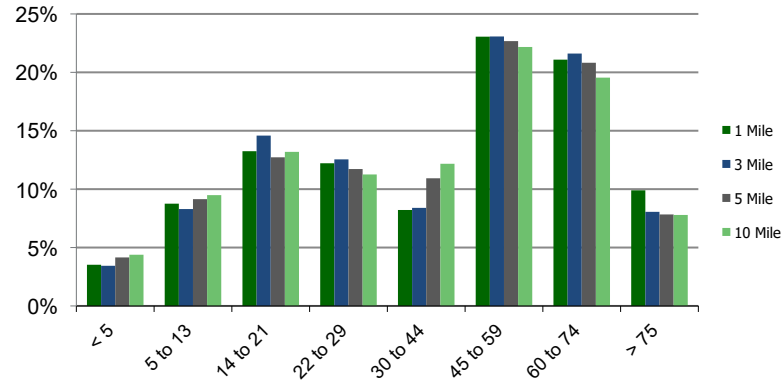
Daytime Population (3-Mile)



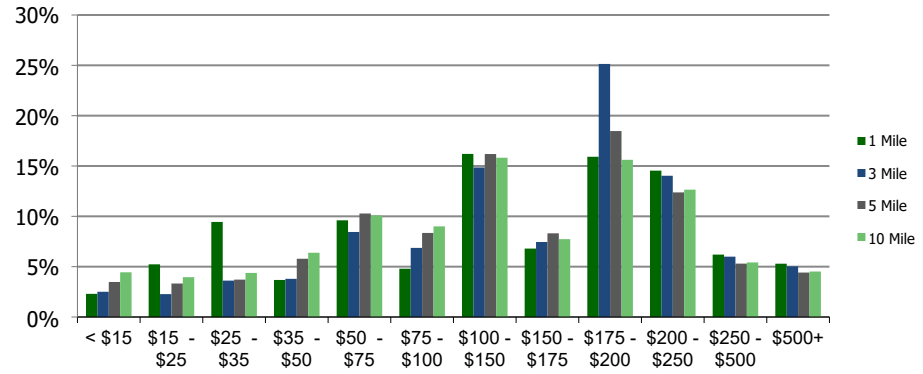
Ethnicity (3-Mile)

This report was produced using data from private and government sources deemed to be reliable and is herein provided without representation or warranty.

### Population by Age Range



### Household Income by Income Range (\$000)



**116880-Wilton River Park S.C.**  
Wilton, CT

1.00 Mile  
Radius

3.00 Mile  
Radius

5.00 Mile  
Radius

10.00 Mile  
Radius

	1.00 Mile Radius	3.00 Mile Radius	5.00 Mile Radius	10.00 Mile Radius
<b>Population</b>				
Current Estimated Population	2,806	22,210	83,280	320,973
2010 Census Population	2,702	21,452	80,416	311,725
2000 Census Population	2,668	20,846	78,345	300,952
Historical Annual Growth 2000 to 2010	0.13%	0.29%	0.26%	0.35%
Estimated Annual Growth 2010 to 2020	0.35%	0.32%	0.33%	0.27%
Projected Annual Growth 2020 to 2025	0.01%	0.06%	0.13%	0.09%
<b>Households</b>				
Current Estimated Households	1,137	7,963	30,691	116,312
2010 Census Households	1,097	7,661	29,560	112,706
2000 Census Households	1,044	7,238	28,695	110,095
Historical Annual Growth 2000 to 2010	0.5%	0.6%	0.3%	0.2%
Estimated Annual Growth 2010 to 2020	0.3%	0.4%	0.3%	0.3%
Projected Annual Growth 2020 to 2025	0.0%	0.1%	0.1%	0.1%
Population per Household	2.4	2.8	2.7	2.7
<b>Ethnicity</b>				
White	89.5%	89.6%	86.7%	84.5%
Black or African American	1.4%	2.1%	4.2%	5.6%
Asian & Pacific Islander	6.6%	5.5%	5.2%	4.8%
Other Races	2.5%	2.7%	3.9%	5.1%
Hispanic or Latino Population	4.0%	4.0%	9.1%	11.7%
Non Hispanic or Latino Population	96.0%	96.0%	90.9%	88.3%

This report was produced using data from private and government sources deemed to be reliable and is herein provided without representation or warranty.