

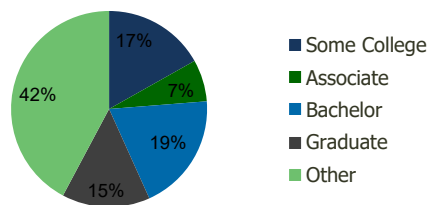
113390-The Boulevard Staten Island, NY	1.00 Mile Radius	3.00 Mile Radius	5.00 Mile Radius	10.00 Mile Radius
---	---------------------	---------------------	---------------------	----------------------

Demographics (2021)

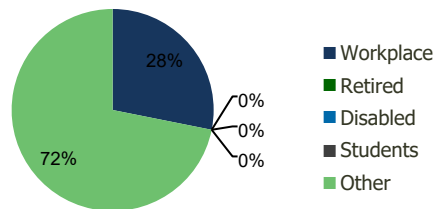
Current Population	34,886	160,275	394,598	2,195,374
Total Daytime Pop	33,018	128,955	340,057	1,927,584
Workplace Pop	10,670	36,288	97,898	648,902
Average Household Income	\$102,607	\$112,751	\$108,511	\$97,598
Median Household Income	\$81,791	\$90,013	\$87,069	\$71,172
Total Housing Units	13,505	58,723	140,662	783,405
Median Home Value	\$667,978	\$687,409	\$664,786	\$590,615
Bachelors Degree	16.3%	19.5%	19.8%	20.1%
Graduate Degree	11.4%	14.5%	14.0%	13.2%

Projections (2026)

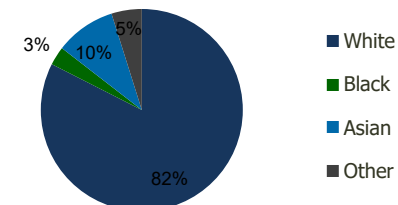
Projected Population	35,895	162,448	400,761	2,179,282
Projected 5 Year Pop Growth	0.6%	0.3%	0.3%	-0.1%
Projected Households	14,007	59,646	142,981	777,678
Projected 5 Year Household Growth	0.7%	0.3%	0.3%	-0.1%



Education (3-Mile)



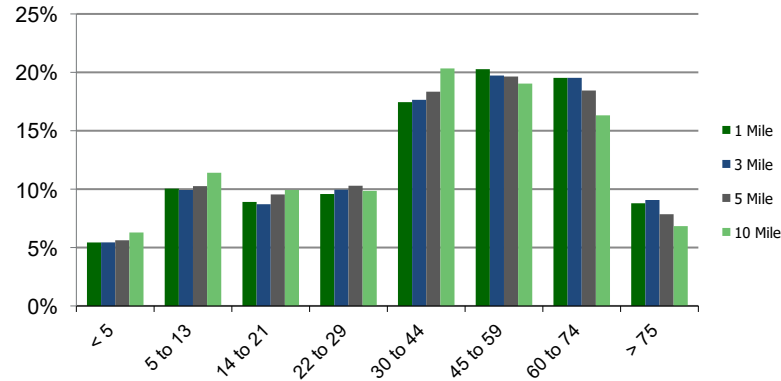
Daytime Population (3-Mile)



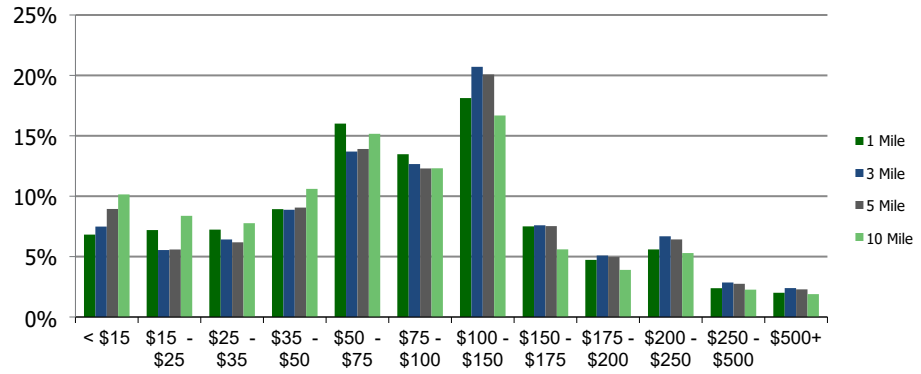
Ethnicity (3-Mile)

This report was produced using data from private and government sources deemed to be reliable and is herein provided without representation or warranty.

Population by Age Range



Household Income by Income Range (\$000)



113390-The Boulevard Staten Island, NY	1.00 Mile Radius	3.00 Mile Radius	5.00 Mile Radius	10.00 Mile Radius
--	-------------------------	-------------------------	-------------------------	--------------------------

Population	Current Estimated Population	34,886	160,275	394,598	2,195,374
	2010 Census Population	33,001	154,726	378,548	2,098,903
	2000 Census Population	32,061	152,016	364,633	2,046,095
	Historical Annual Growth 2000 to 2010	0.29%	0.18%	0.38%	0.26%
	Estimated Annual Growth 2010 to 2020	0.47%	0.30%	0.35%	0.38%
	Projected Annual Growth 2020 to 2025	0.57%	0.27%	0.31%	-0.15%
Households	Current Estimated Households	13,505	58,723	140,662	783,405
	2010 Census Households	12,408	56,286	134,512	748,151
	2000 Census Households	12,140	54,816	129,533	734,188
	Historical Annual Growth 2000 to 2010	0.2%	0.3%	0.4%	0.2%
	Estimated Annual Growth 2010 to 2020	0.7%	0.4%	0.4%	0.4%
	Projected Annual Growth 2020 to 2025	0.7%	0.3%	0.3%	-0.1%
	Population per Household	2.6	2.7	2.8	2.8
Ethnicity	White	85.1%	82.5%	74.3%	60.3%
	Black or African American	3.0%	3.0%	8.7%	13.2%
	Asian & Pacific Islander	6.2%	9.7%	9.4%	14.3%
	Other Races	5.7%	4.9%	7.6%	12.2%
	Hispanic or Latino Population	14.4%	12.1%	17.5%	22.8%
	Non Hispanic or Latino Population	85.6%	87.9%	82.5%	77.2%

This report was produced using data from private and government sources deemed to be reliable and is herein provided without representation or warranty.