

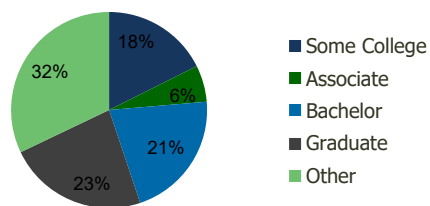
105000-Hamden Mart Hamden, CT	1.00 Mile Radius	3.00 Mile Radius	5.00 Mile Radius	10.00 Mile Radius
----------------------------------	---------------------	---------------------	---------------------	----------------------

### Demographics (2019)

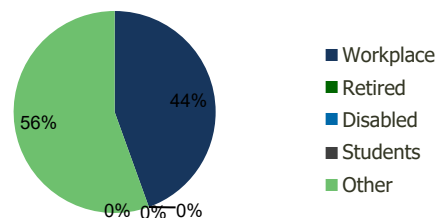
Current Population	11,131	66,405	194,597	497,464
Total Daytime Pop	15,317	68,877	284,531	581,140
Workplace Pop	7,688	30,646	128,727	251,295
Average Household Income	\$104,525	\$97,348	\$85,335	\$90,345
Median Household Income	\$77,096	\$73,652	\$60,045	\$66,890
Total Housing Units	5,136	26,603	75,315	193,250
Median Home Value	\$277,588	\$263,610	\$276,452	\$283,032
Bachelors Degree	25.7%	21.2%	18.9%	18.6%
Graduate Degree	24.0%	23.1%	20.8%	16.9%

### Projections (2023)

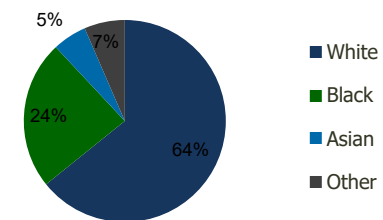
Projected Population	11,575	68,758	200,065	508,478
Projected 5 Year Pop Growth	0.8%	0.7%	0.6%	0.4%
Projected Households	5,348	27,597	77,724	197,899
Projected 5 Year Household Growth	0.8%	0.7%	0.6%	0.5%



Education (3-Mile)



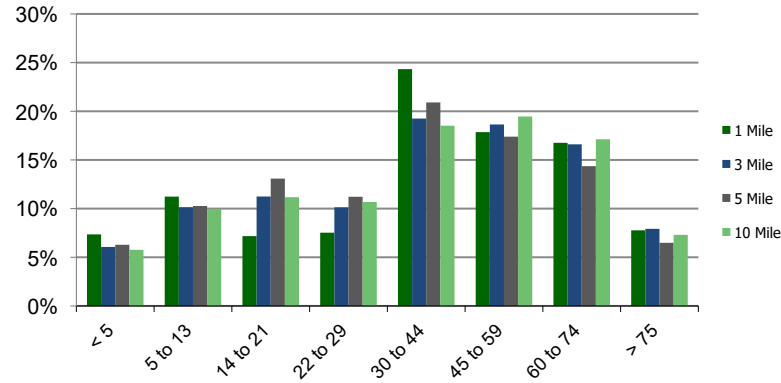
Daytime Population (3-Mile)



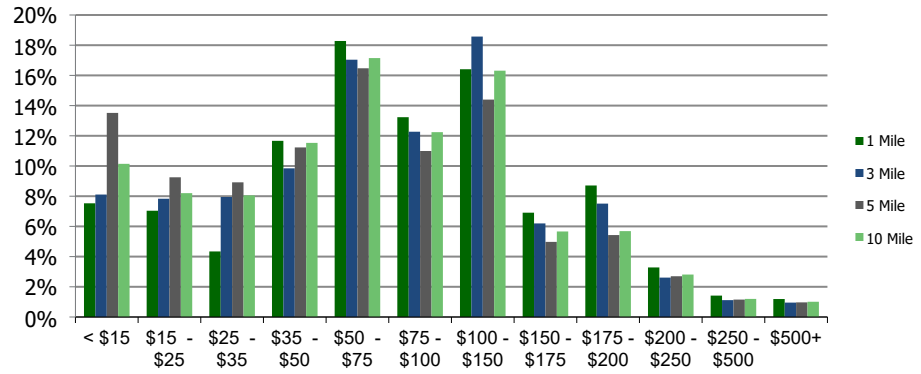
Ethnicity (3-Mile)

This report was produced using data from private and government sources deemed to be reliable and is herein provided without representation or warranty.

**Population by Age Range**



**Household Income by Income Range (\$000)**



**105000-Hamden Mart**

Hamden, CT

1.00 Mile Radius

3.00 Mile Radius

5.00 Mile Radius

10.00 Mile Radius

	1.00 Mile Radius	3.00 Mile Radius	5.00 Mile Radius	10.00 Mile Radius
<b>Population</b>	Current Estimated Population	11,131	66,405	194,597
	2010 Census Population	10,699	64,566	192,796
	2000 Census Population	10,478	61,506	183,666
	Historical Annual Growth 2000 to 2010	0.21%	0.49%	0.49%
	Estimated Annual Growth 2010 to 2012	0.41%	0.29%	0.10%
	Projected Annual Growth 2012 to 2019	0.79%	0.70%	0.56%
<b>Households</b>	Current Estimated Households	5,136	26,603	75,315
	2010 Census Households	4,913	25,779	74,225
	2000 Census Households	4,716	24,740	70,911
	Historical Annual Growth 2000 to 2010	0.4%	0.4%	0.5%
	Estimated Annual Growth 2010 to 2012	0.5%	0.3%	0.1%
	Projected Annual Growth 2012 to 2019	0.8%	0.7%	0.6%
	Population per Household	2.1	2.4	2.4
<b>Ethnicity</b>	White	70.1%	64.2%	57.7%
	Black or African American	15.7%	23.8%	26.0%
	Asian & Pacific Islander	9.9%	5.5%	5.6%
	Other Races	4.4%	6.5%	10.7%
	Hispanic or Latino Population	6.8%	9.4%	16.3%
	Non Hispanic or Latino Population	93.2%	90.6%	83.7%

This report was produced using data from private and government sources deemed to be reliable and is herein provided without representation or warranty.