

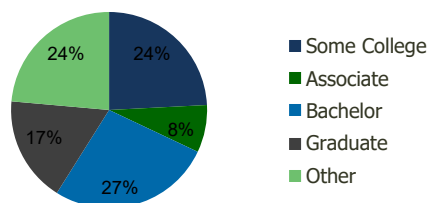
110090-Canyon Pointe S.C. Las Vegas, NV	1.00 Mile Radius	3.00 Mile Radius	5.00 Mile Radius	10.00 Mile Radius
--------------------------------------------	---------------------	---------------------	---------------------	----------------------

## Demographics (2019)

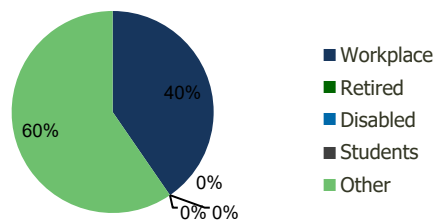
Current Population	14,544	102,641	254,941	833,044
Total Daytime Pop	18,474	99,892	230,290	1,019,510
Workplace Pop	7,821	40,351	92,016	558,285
Average Household Income	\$126,685	\$127,579	\$100,944	\$82,366
Median Household Income	\$95,955	\$85,767	\$68,664	\$60,152
Total Housing Units	5,679	41,413	104,872	321,477
Median Home Value	\$772,375	\$787,987	\$660,203	\$557,328
Bachelors Degree	27.8%	26.9%	22.4%	17.2%
Graduate Degree	22.3%	17.5%	13.1%	8.7%

## Projections (2023)

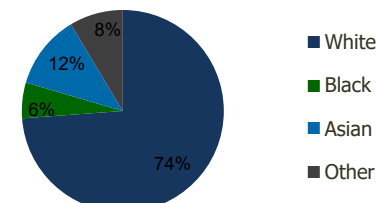
Projected Population	16,002	109,443	265,549	882,573
Projected 5 Year Pop Growth	1.9%	1.3%	0.8%	1.2%
Projected Households	6,235	43,994	108,880	340,481
Projected 5 Year Household Growth	1.9%	1.2%	0.8%	1.2%



Education (3-Mile)



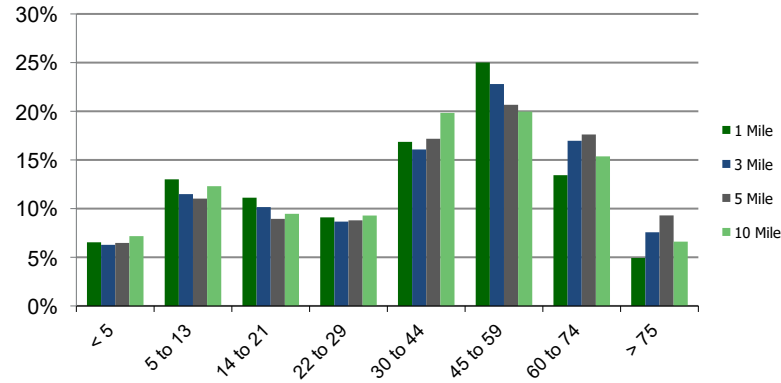
Daytime Population (3-Mile)



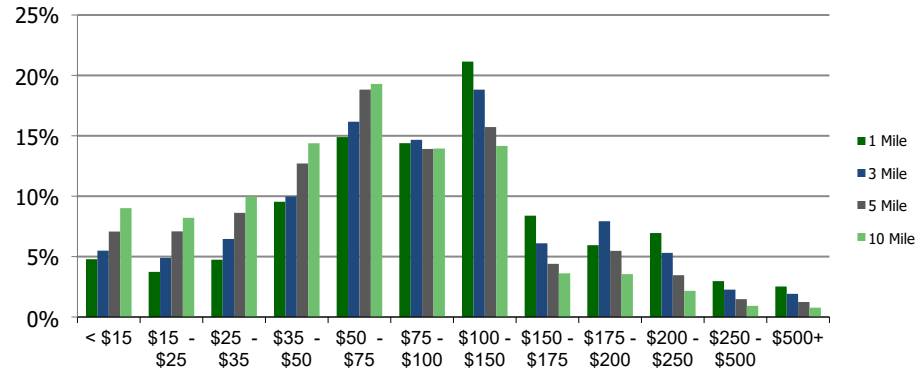
Ethnicity (3-Mile)

This report was produced using data from private and government sources deemed to be reliable and is herein provided without representation or warranty.

### Population by Age Range



### Household Income by Income Range (\$000)



110090-Canyon Pointe S.C. Las Vegas, NV	1.00 Mile Radius	3.00 Mile Radius	5.00 Mile Radius	10.00 Mile Radius
--------------------------------------------	------------------	------------------	------------------	-------------------

<b>Population</b>	Current Estimated Population	14,544	102,641	254,941	833,044
	2010 Census Population	12,028	89,287	226,072	721,884
	2000 Census Population	1,782	54,036	164,749	534,595
	Historical Annual Growth 2000 to 2010	21.04%	5.15%	3.21%	3.05%
	Estimated Annual Growth 2010 to 2012	1.97%	1.44%	1.24%	1.48%
	Projected Annual Growth 2012 to 2019	1.93%	1.29%	0.82%	1.16%
<b>Households</b>	Current Estimated Households	5,679	41,413	104,872	321,477
	2010 Census Households	4,677	36,133	93,310	278,395
	2000 Census Households	675	22,218	67,218	208,084
	Historical Annual Growth 2000 to 2010	21.4%	5.0%	3.3%	3.0%
	Estimated Annual Growth 2010 to 2012	2.0%	1.4%	1.2%	1.5%
	Projected Annual Growth 2012 to 2019	1.9%	1.2%	0.8%	1.2%
	Population per Household	2.5	2.5	2.4	2.6
<b>Ethnicity</b>	White	73.4%	73.8%	69.3%	61.8%
	Black or African American	5.0%	5.7%	7.9%	10.6%
	Asian & Pacific Islander	13.4%	11.9%	12.1%	11.2%
	Other Races	8.2%	8.6%	10.7%	16.4%
	Hispanic or Latino Population	12.2%	11.4%	14.8%	24.5%
	Non Hispanic or Latino Population	87.8%	88.6%	85.2%	75.5%

This report was produced using data from private and government sources deemed to be reliable and is herein provided without representation or warranty.