

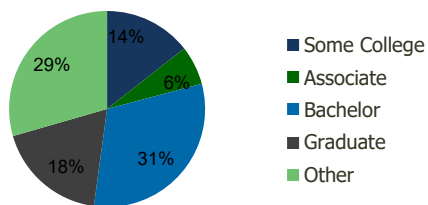
104411-Hillsborough Promenade Hillsborough, NJ	1.00 Mile Radius	3.00 Mile Radius	5.00 Mile Radius	10.00 Mile Radius
---	---------------------	---------------------	---------------------	----------------------

## Demographics (2021)

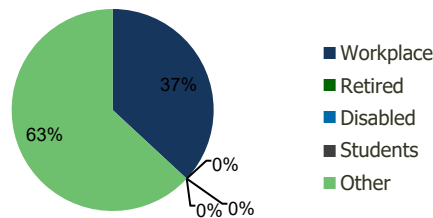
Current Population	6,284	43,323	105,412	459,808
Total Daytime Pop	5,716	33,903	127,275	606,191
Workplace Pop	2,260	12,509	73,013	302,781
Average Household Income	\$111,834	\$134,484	\$137,736	\$137,374
Median Household Income	\$97,326	\$109,285	\$108,872	\$105,546
Total Housing Units	2,452	16,106	38,941	160,710
Median Home Value	\$430,082	\$474,483	\$529,580	\$540,881
Bachelors Degree	28.9%	31.3%	29.5%	28.2%
Graduate Degree	16.9%	18.4%	21.8%	22.4%

## Projections (2026)

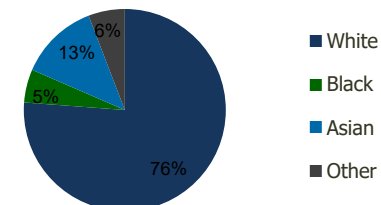
Projected Population	6,799	44,988	109,107	472,576
Projected 5 Year Pop Growth	1.6%	0.8%	0.7%	0.5%
Projected Households	2,653	16,743	40,346	165,294
Projected 5 Year Household Growth	1.6%	0.8%	0.7%	0.6%



Education (3-Mile)



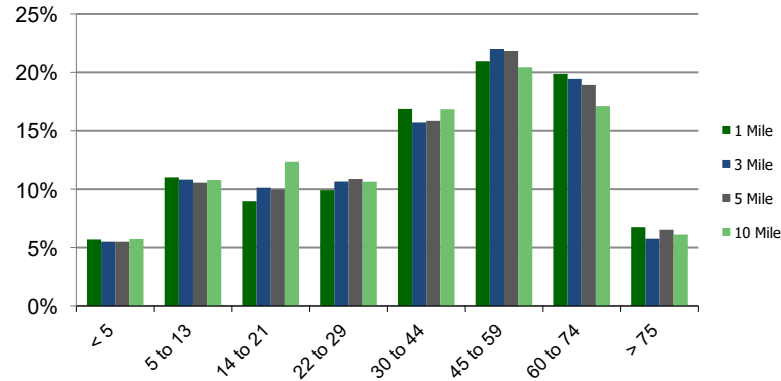
Daytime Population (3-Mile)



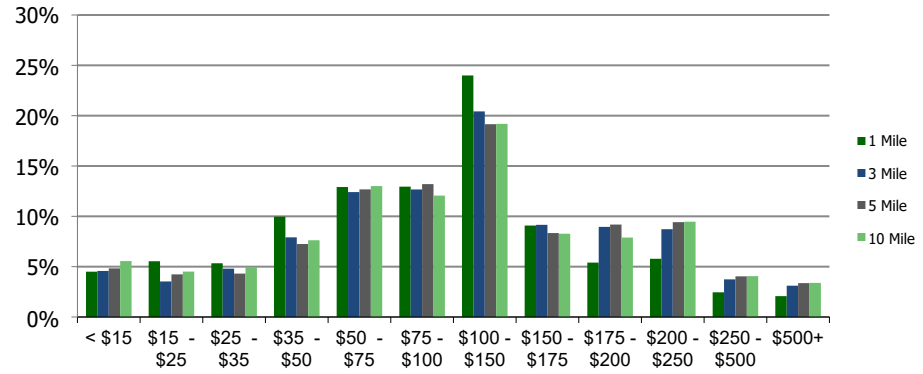
Ethnicity (3-Mile)

This report was produced using data from private and government sources deemed to be reliable and is herein provided without representation or warranty.

**Population by Age Range**



**Household Income by Income Range (\$000)**



	1.00 Mile Radius	3.00 Mile Radius	5.00 Mile Radius	10.00 Mile Radius
<b>104411-Hillsborough Promenade</b>				
Hillsborough, NJ				

<b>Population</b>	Current Estimated Population	6,284	43,323	105,412	459,808
	2010 Census Population	5,173	39,761	96,968	430,185
	2000 Census Population	5,099	38,412	90,976	388,753
	Historical Annual Growth 2000 to 2010	0.14%	0.35%	0.64%	1.02%
	Estimated Annual Growth 2010 to 2020	1.67%	0.73%	0.71%	0.57%
	Projected Annual Growth 2020 to 2025	1.59%	0.76%	0.69%	0.55%
<b>Households</b>	Current Estimated Households	2,452	16,106	38,941	160,710
	2010 Census Households	2,025	14,749	35,760	149,924
	2000 Census Households	1,957	14,108	33,375	138,682
	Historical Annual Growth 2000 to 2010	0.3%	0.4%	0.7%	0.8%
	Estimated Annual Growth 2010 to 2020	1.6%	0.8%	0.7%	0.6%
	Projected Annual Growth 2020 to 2025	1.6%	0.8%	0.7%	0.6%
	Population per Household	2.6	2.7	2.7	2.8
<b>Ethnicity</b>	White	72.5%	76.2%	72.2%	61.7%
	Black or African American	7.3%	5.3%	5.3%	11.4%
	Asian & Pacific Islander	11.6%	12.7%	16.8%	18.8%
	Other Races	8.6%	5.8%	5.7%	8.2%
	Hispanic or Latino Population	15.0%	11.1%	11.8%	16.7%
	Non Hispanic or Latino Population	85.0%	88.9%	88.2%	83.3%

This report was produced using data from private and government sources deemed to be reliable and is herein provided without representation or warranty.