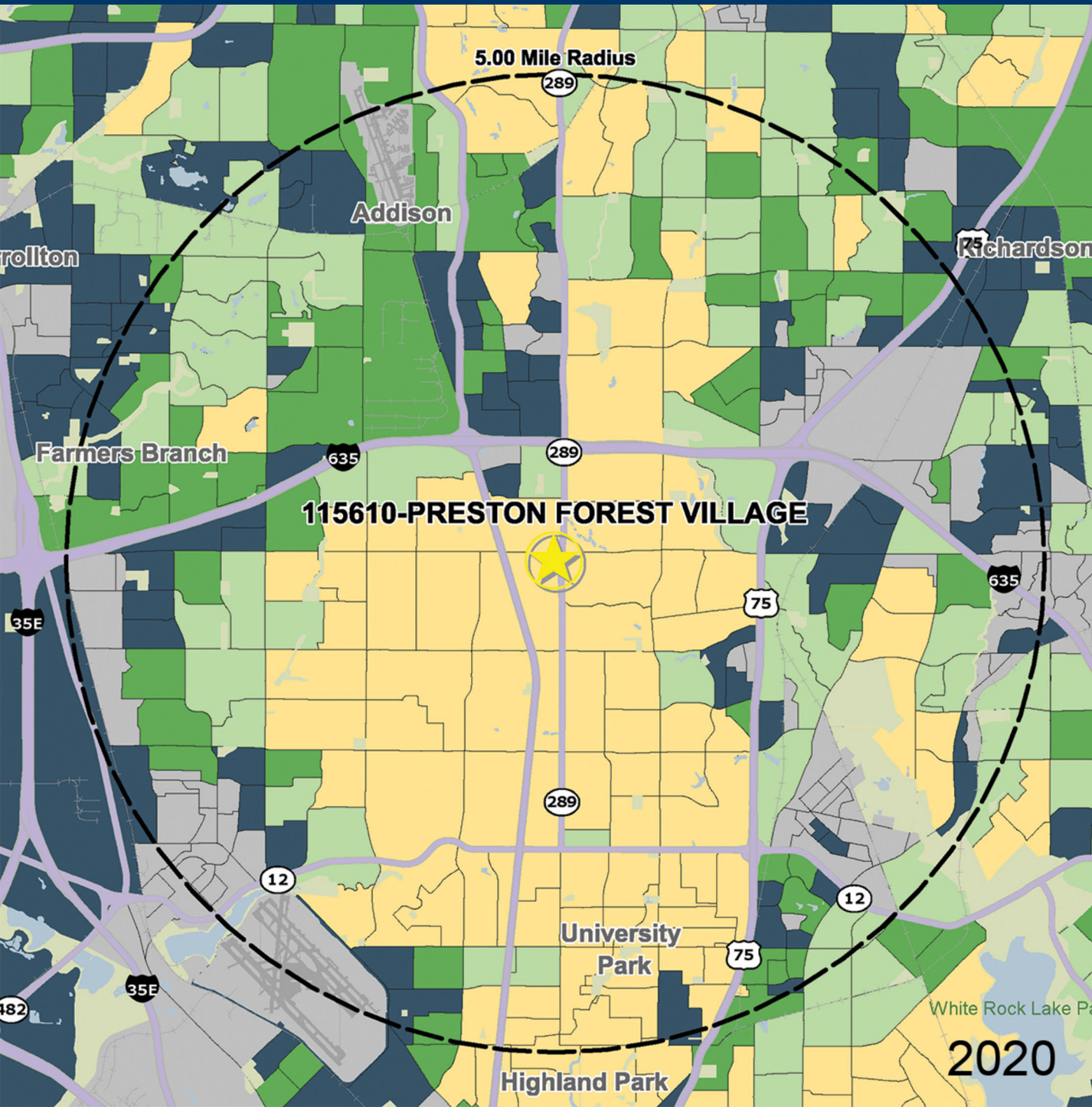


115610

# PRESTON FOREST VILLAGE

PRESTON RD. & FOREST LANE, DALLAS, TX

MANAGED BY AN AFFILIATE OF



## DEMOGRAPHICS

2020 ESTIMATES	1-MILE	3-MILE	5-MILE
POPULATION	8,669	113,678	410,160
DAYTIME POP	14,071	227,612	660,980
HOUSEHOLDS	3,484	50,767	173,259
AVERAGE HH INCOME	\$290,878	\$155,796	\$123,876
MEDIAN HH INCOME	\$178,349	\$81,804	\$69,411
PER CAPITA INCOME	\$116,960	\$69,855	\$52,555

Trade Area Systems, Updates of 2010 Census Data by Synergos

### Avg. HH Income

By Block Group

- \$150K and up
- \$100K - \$150K
- \$75K - \$100K
- \$50K - \$75K
- 0 - \$50K

Popstats, 4Q 2020, Trade Area Systems

2020