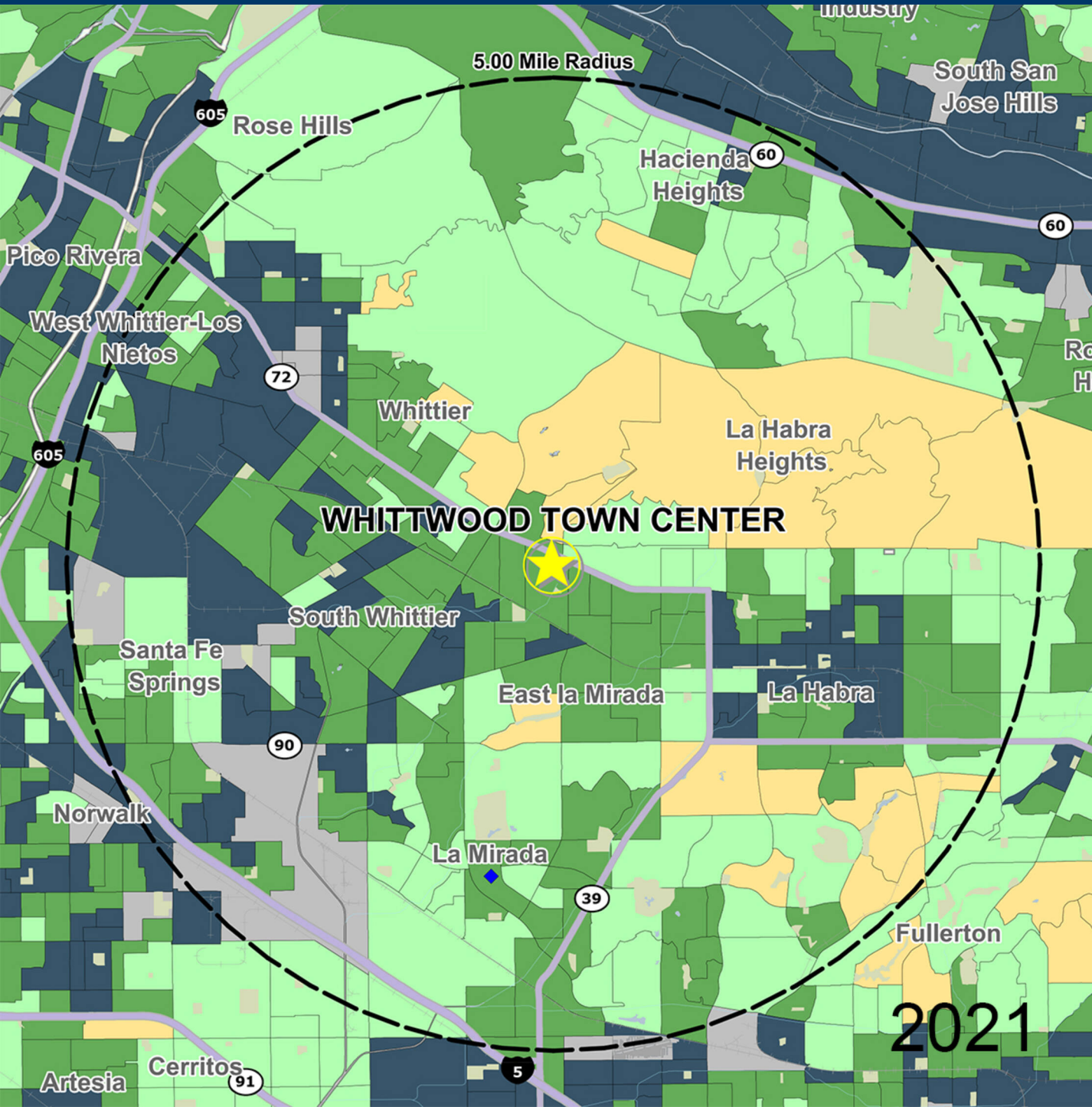


# WHITTWOOD TOWN CENTER

WHITTIER BLVD. & SANTA GERTRUDES AVE., WHITTIER, CA



## DEMOGRAPHICS

2021 ESTIMATES	1-MILE	3-MILE	5-MILE
POPULATION	19,299	174,901	416,434
DAYTIME POP	19,050	145,897	415,354
HOUSEHOLDS	6,396	54,685	127,023
AVERAGE HH INCOME	\$116,429	\$106,178	\$105,527
MEDIAN HH INCOME	\$103,385	\$86,958	\$85,298
PER CAPITA INCOME	\$39,021	\$33,635	\$32,533

Trade Area Systems, Updates of 2010 Census Data by Synergos

### Average Household Income

By Block Group

- \$150K and up
- \$100K - \$150K
- \$75K - \$100K
- \$50K - \$75K
- 0 - \$50K

Popstats, 4Q 2021, Trade Area Systems

2021