

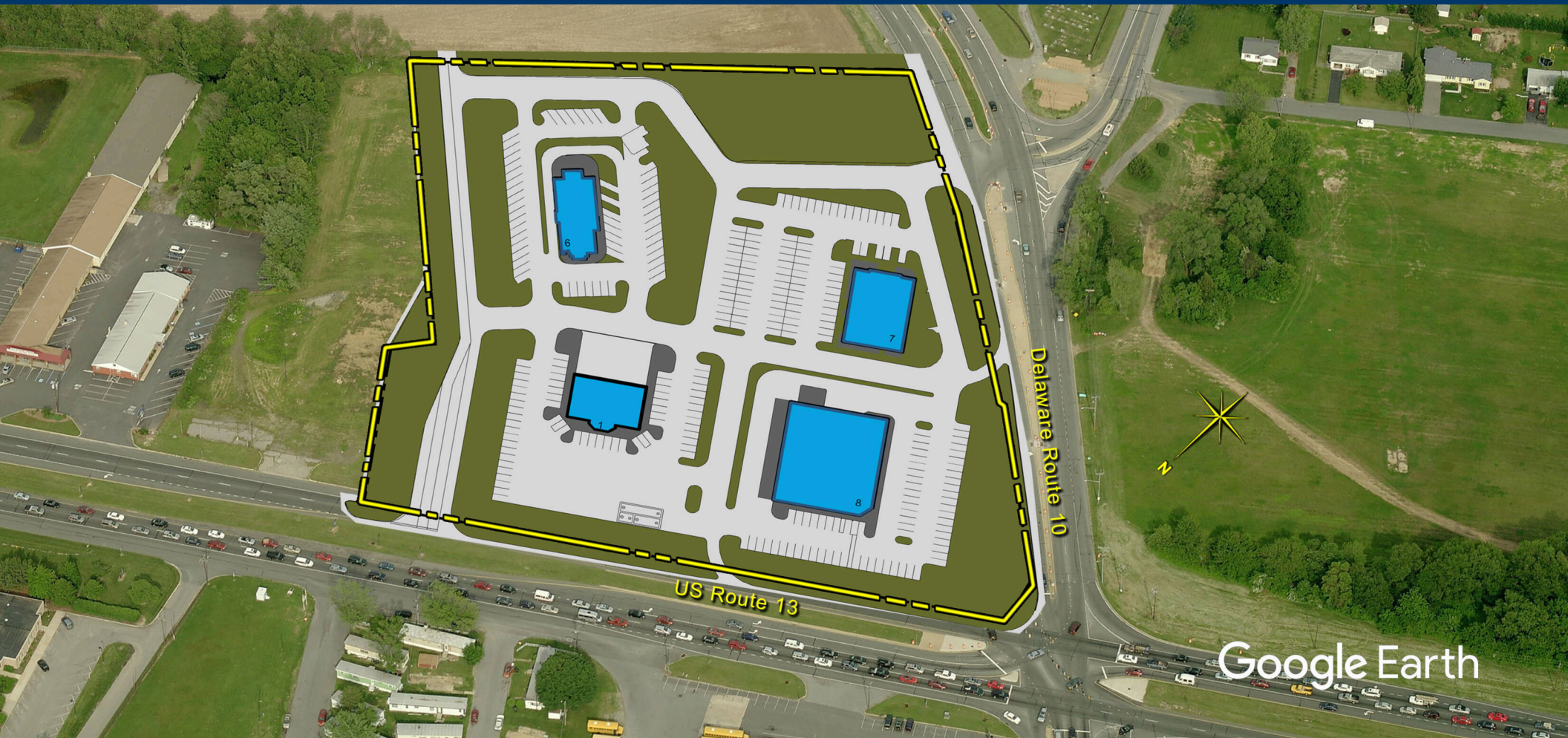
110890

CAMDEN SQUARE

US RTE. 13 & DELAWARE RTE. 10, DOVER, DE

MANAGED BY AN AFFILIATE OF







KIMCO
 REALTY



Google Earth

WEB LINK: kimcorealty.com/110890

DEMOGRAPHICS

	 POPULATION	 DAYTIME POPULATION	 HOUSEHOLDS	 AVG. HH INCOME	 MED. HH INCOME	 PER CAPITA INCOME
2022 ESTIMATES						
1 MILE	6,380	7,219	2,394	\$85,725	\$65,734	\$32,200
3 MILE	35,515	37,799	13,216	\$82,234	\$65,051	\$30,806
5 MILE	81,642	96,430	30,449	\$78,813	\$62,146	\$30,052
10 MILE	128,071	131,834	47,594	\$79,383	\$63,129	\$30,024

LEASING REPRESENTATIVE

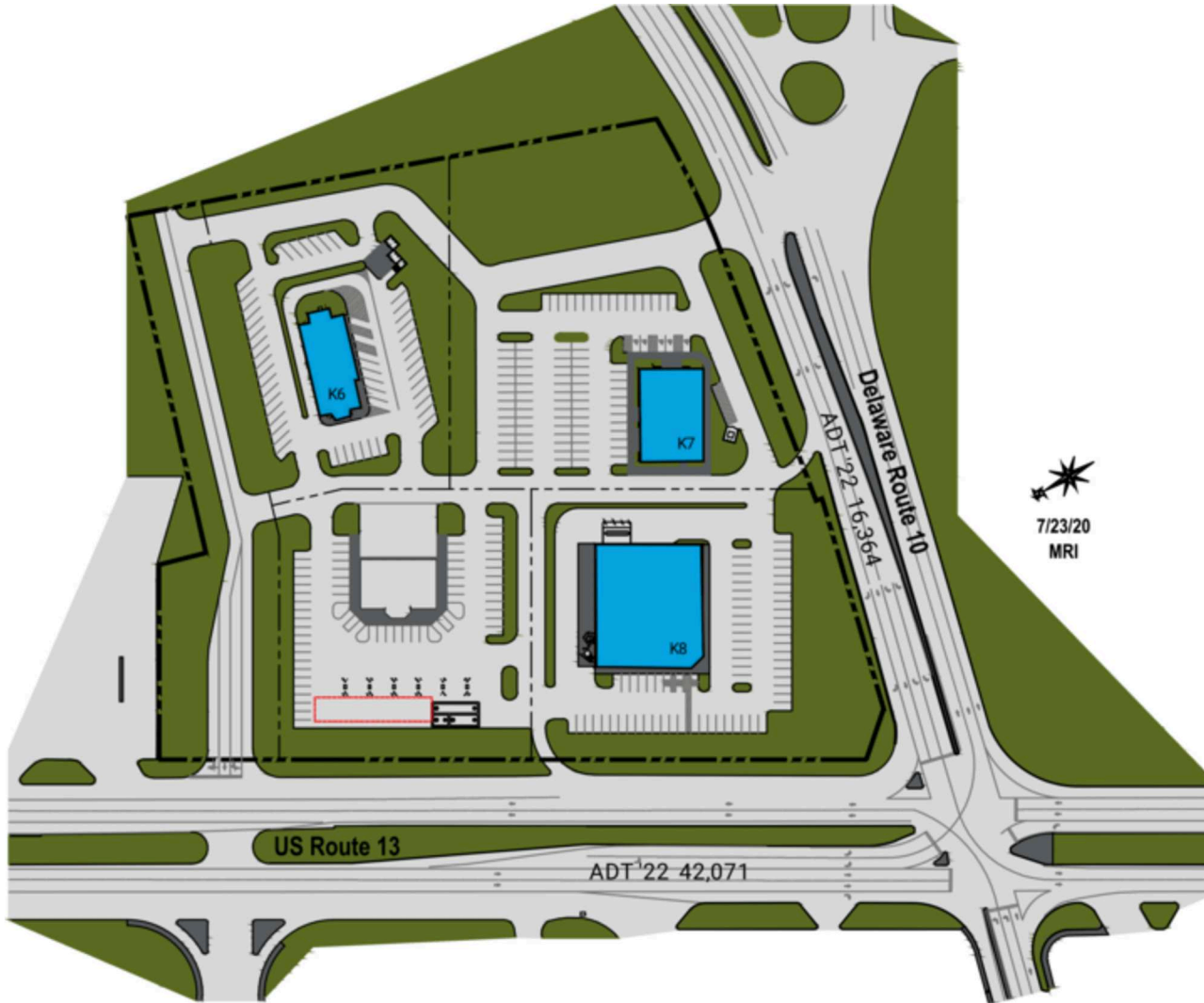
JENNA MIELKE

(410) 427-4479 | jmielke@kimcorealty.com

CAMDEN SQUARE

US RTE. 13 & DELAWARE RTE. 10, DOVER, DE

TENANT	SQFT
K6 Available	4,590
K7 Available	6,160
K8 Available	14,739



Availability

LEASING REPRESENTATIVE

JENNA MIELKE

(410) 427-4479 | jmielke@kimcorealty.com

Disclaimer: This site plan shows the approximate location, square footage, and configuration of the shopping center and adjacent areas, and is only illustrative of the size and relationship of the stores and common areas generally, all of which are subject to change. The showing of any names of tenants, parking spaces, square footage, curbs-cuts or traffic controls shall not be deemed to be a representation or warranty that any tenants will be at the shopping center, the square footage is accurate, or that any parking spaces, curbs-cuts or traffic controls do or will continue to exist. Moreover, any demographics set forth in this flyer are for illustrative purposes only and shall not be deemed a representation by Landlord or their accuracy. Availability of this property for rent is subject to prior rental or withdrawal of the property from the market at any time without notice.