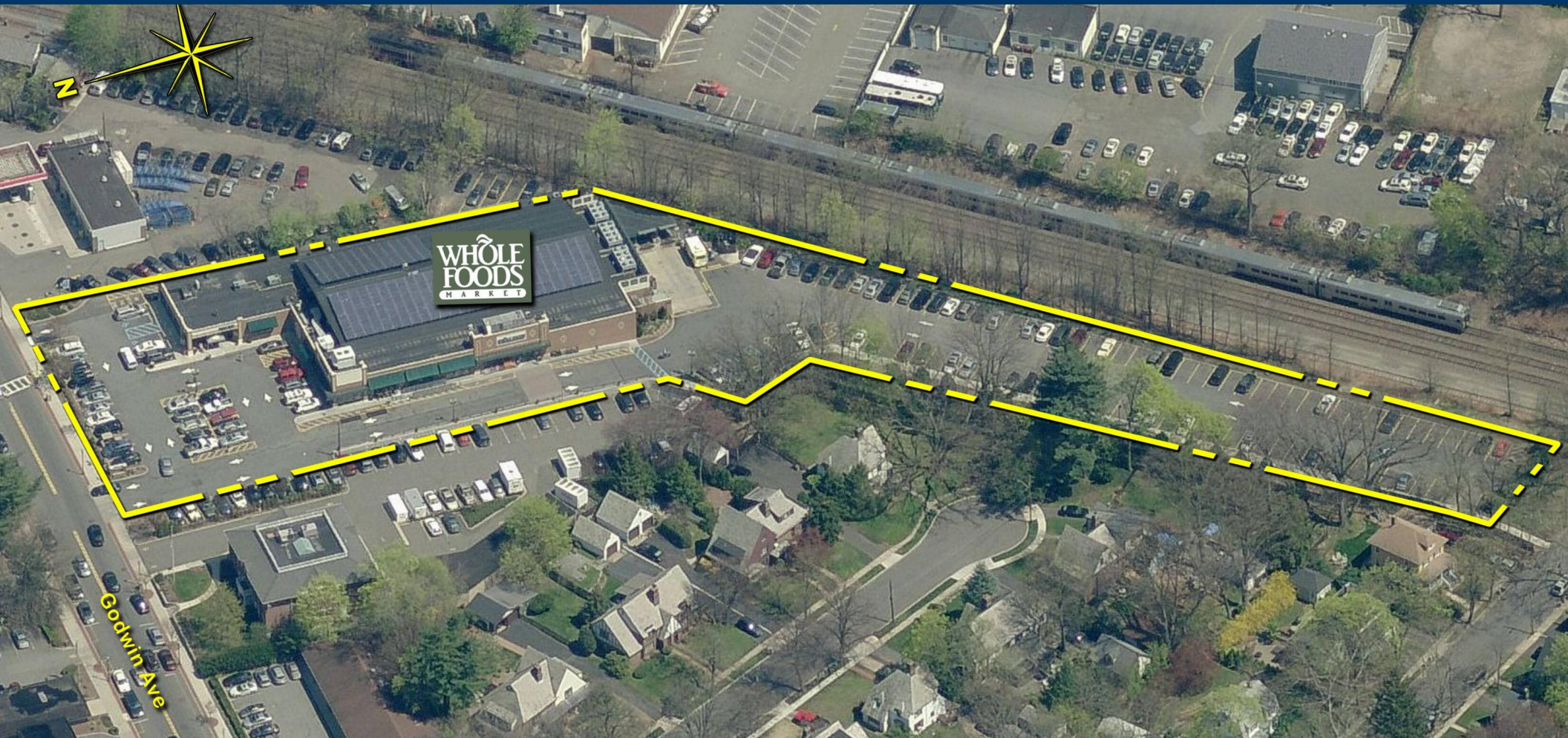


106150

RIDGEWOOD S.C.

GODWIN AVE. & ETHELBERT PL., RIDGEWOOD, NJ

MANAGED BY AN AFFILIATE OF



GLA: 24,280 SF

PARKING SPACES: 165

PARKING RATIO: 6.8 per 1,000 SF

MSA: New York-Newark-Jersey City (NY-NJ-PA)

WEB LINK: kimcorealty.com/106150

DEMOGRAPHICS



2021 ESTIMATES

POPULATION

DAYTIME POPULATION

HOUSEHOLDS

AVG. HH INCOME

MED. HH INCOME

PER CAPITA INCOME

	POPULATION	DAYTIME POPULATION	HOUSEHOLDS	AVG. HH INCOME	MED. HH INCOME	PER CAPITA INCOME
1 MILE	14,435	18,255	5,179	\$234,711	\$166,254	\$84,499
3 MILE	111,978	123,969	40,453	\$183,143	\$141,010	\$66,382
5 MILE	337,637	355,235	115,584	\$144,963	\$102,758	\$49,992
10 MILE	1,326,460	1,415,536	461,169	\$129,308	\$94,078	\$45,389

LEASING REPRESENTATIVE

ROBERT WACHTLER(516) 869-2654 | rwachtler@kimcorealty.com

106150

RIDGEWOOD S.C.

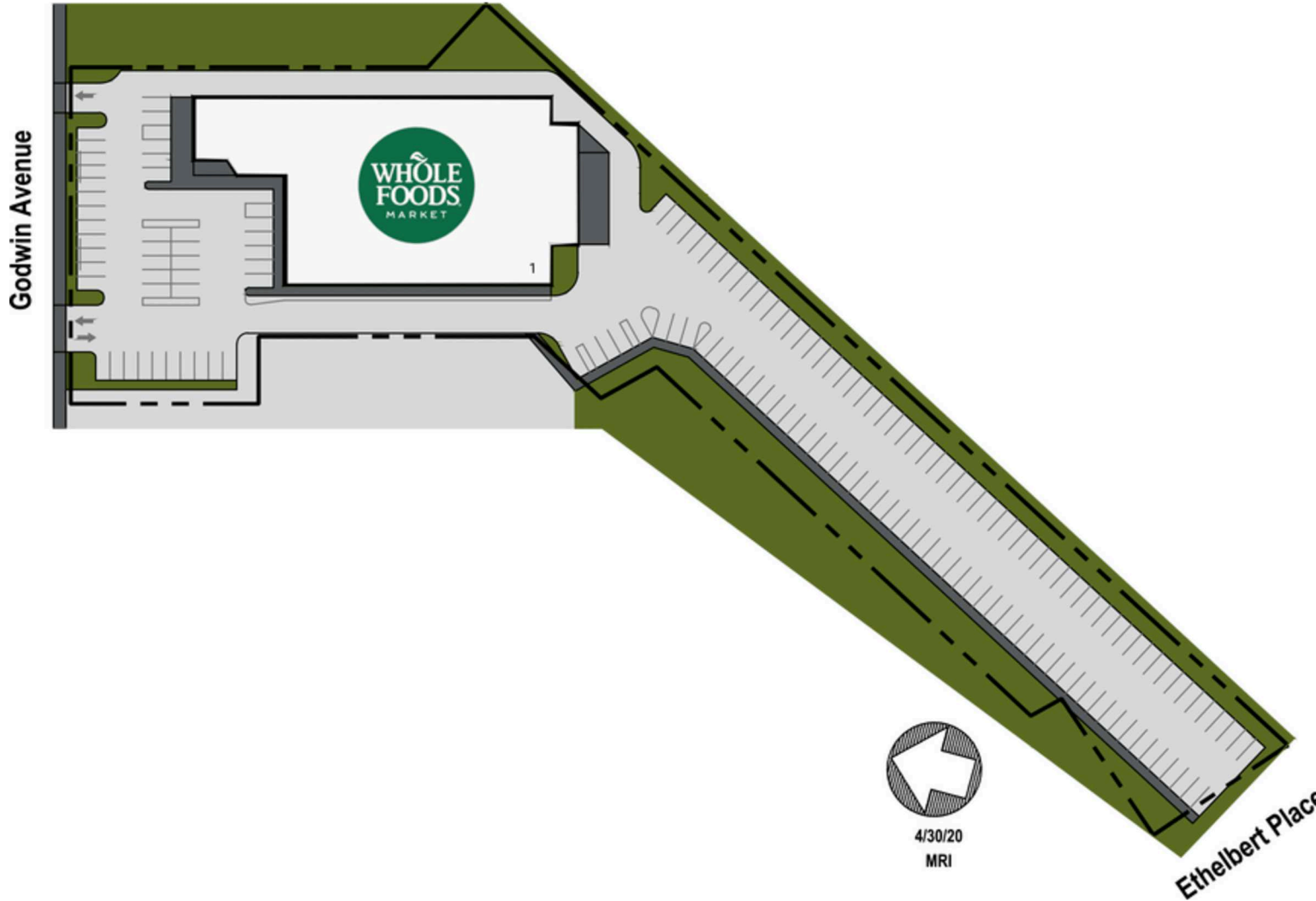
GODWIN AVE. & ETHELBERT PL., RIDGEWOOD, NJ

TENANT

| Whole Foods

SQFT

24,280



LEASING REPRESENTATIVE

ROBERT WACHTLER

(516) 869-2654 | rwachtler@kimcorealty.com

Disclaimer: This site plan shows the approximate location, square footage, and configuration of the shopping center and adjacent areas, and is only illustrative of the size and relationship of the stores and common areas generally, all of which are subject to change. The showing of any names of tenants, parking spaces, square footage, curb-cuts or traffic controls shall not be deemed to be a representation or warranty that any tenants will be at the shopping center, the square footage is accurate, or that any parking spaces, curb-cuts or traffic controls do or will continue to exist. Moreover, any demographics set forth in this flyer are for illustrative purposes only and shall not be deemed a representation by Landlord or their accuracy. Availability of this property for rent is subject to prior rental or withdrawal of the property from the market at any time without notice.