

111380







NORTH MASSAPEQUA S.C.

JERUSALEM AVE. & HICKSVILLE RD., NORTH MASSAPEQUA, NY

MANAGED BY AN AFFILIATE OF

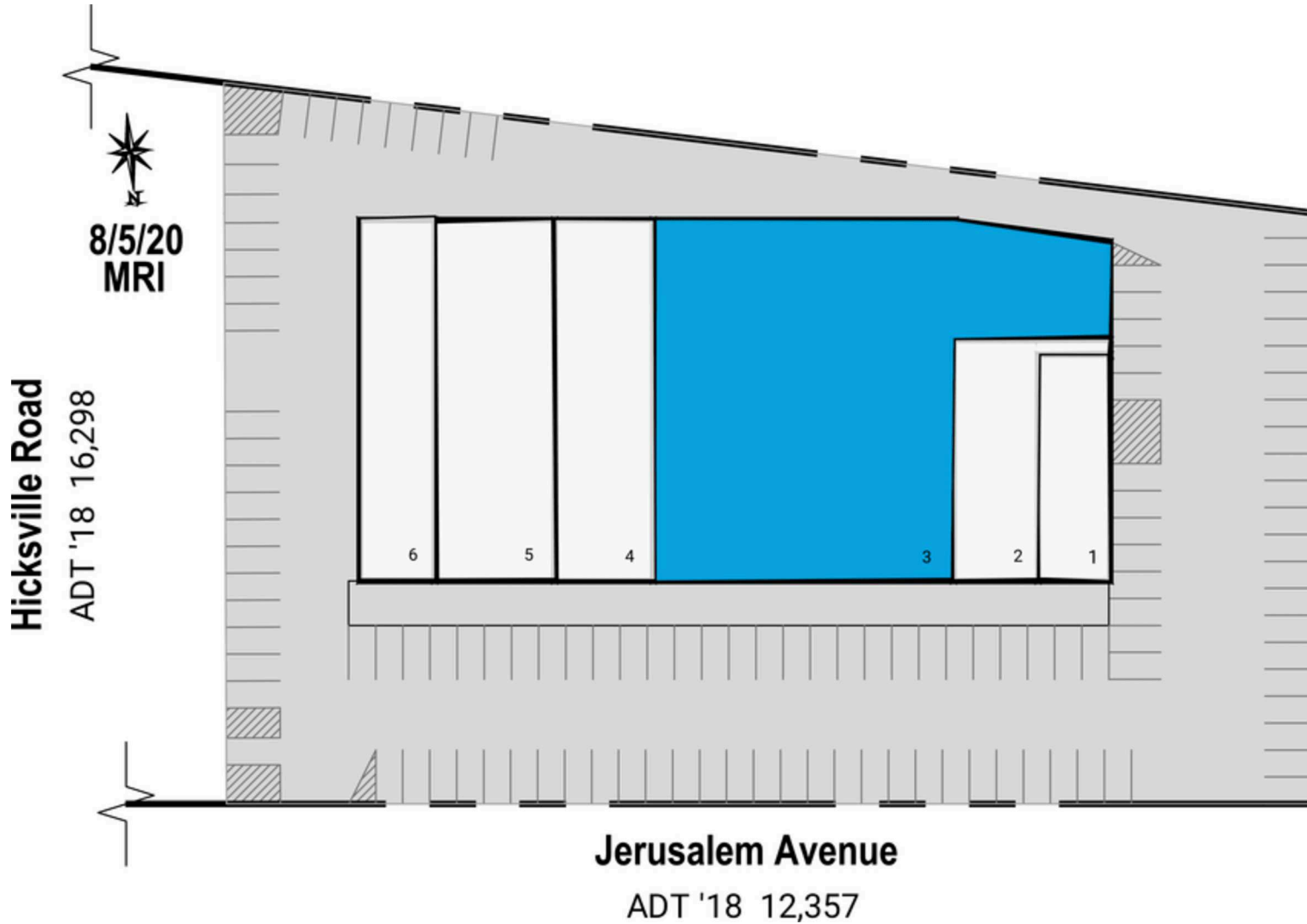
**GLA:** 29,599 SF**PARKING SPACES:** 85**MSA:** New York-Newark-Jersey City (NY-NJ-PA)**WEB LINK:** kimcorealty.com/111380

DEMOGRAPHICS

	 POPULATION	 DAYTIME POPULATION	 HOUSEHOLDS	 AVG. HH INCOME	 MED. HH INCOME	 PER CAPITA INCOME
2021 ESTIMATES						
1 MILE	21,782	17,031	7,488	\$156,219	\$137,349	\$53,741
3 MILE	185,613	141,641	62,493	\$149,700	\$129,008	\$50,509
5 MILE	401,874	343,047	134,103	\$144,761	\$122,727	\$48,489
10 MILE	1,116,880	1,259,001	366,178	\$144,732	\$115,214	\$47,920

LEASING REPRESENTATIVE

ROBERT WACHTLER(516) 869-2654 | rwachtler@kimcorealty.com



Hicksville Road
ADT '18 16,298

Jerusalem Avenue
ADT '18 12,357

Availability

TENANT	SQFT
1 Roger M. Giuliani, DDS PC	1,577
2 Burrito Mariachi Mexican Grill	2,340
3 Available	13,965
4 JC Nail Spa	3,967
5 Seaqua Delicatessen	4,800
6 Teachers Federal Credit Union	2,950

LEASING REPRESENTATIVE

ROBERT WACHTLER

(516) 869-2654 | rwachtler@kimcorealty.com

Disclaimer: This site plan shows the approximate location, square footage, and configuration of the shopping center and adjacent areas, and is only illustrative of the size and relationship of the stores and common areas generally, all of which are subject to change. The showing of any names of tenants, parking spaces, square footage, curb-cuts or traffic controls shall not be deemed to be a representation or warranty that any tenants will be at the shopping center, the square footage is accurate, or that any parking spaces, curb-cuts or traffic controls do or will continue to exist. Moreover, any demographics set forth in this flyer are for illustrative purposes only and shall not be deemed a representation by Landlord or their accuracy. Availability of this property for rent is subject to prior rental or withdrawal of the property from the market at any time without notice.