

111380







# NORTH MASSAPEQUA S.C.

JERUSALEM AVE. &amp; HICKSVILLE RD., NORTH MASSAPEQUA, NY

MANAGED BY AN AFFILIATE OF

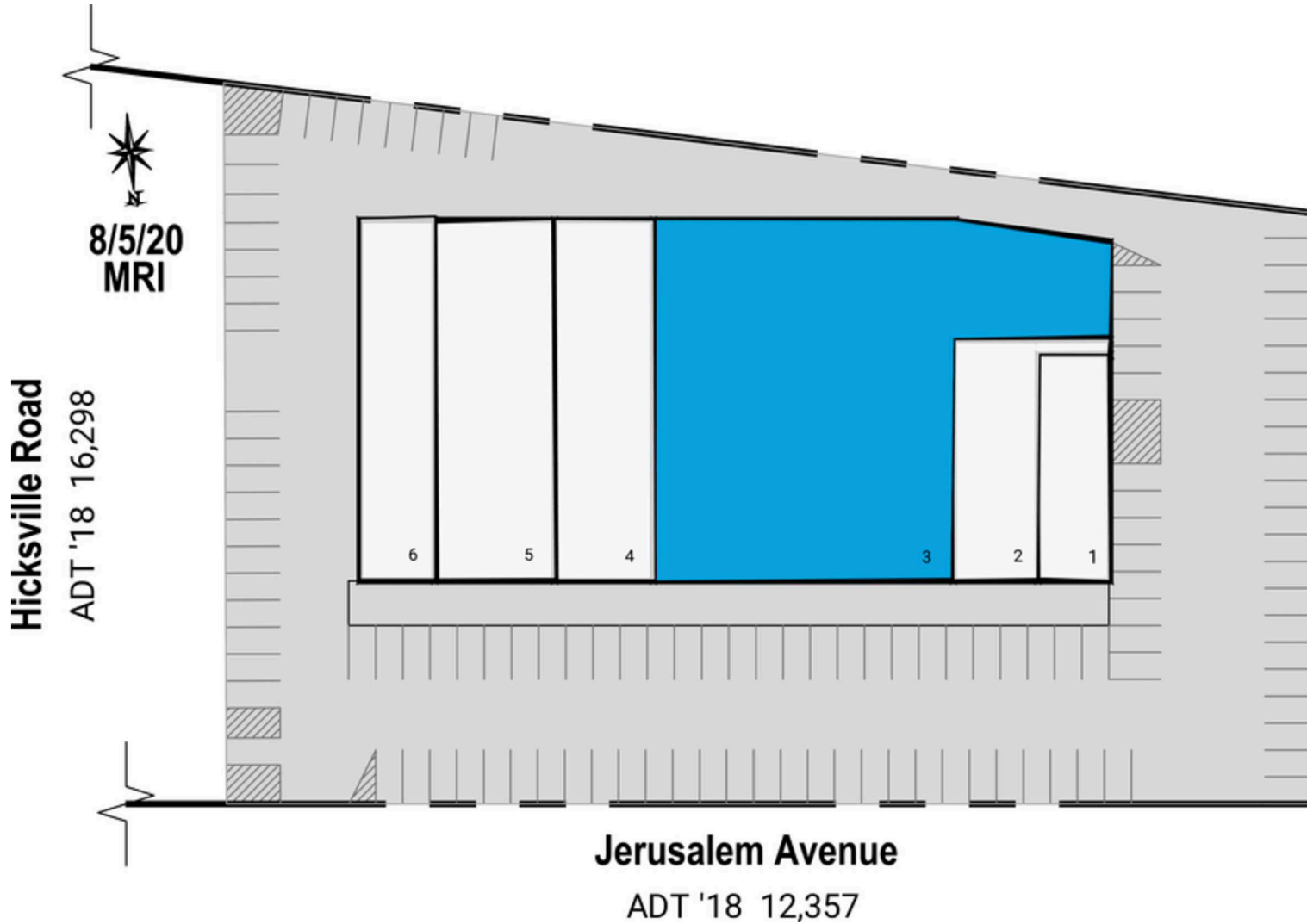
**GLA:** 29,599 SF**PARKING SPACES:** 85**MSA:** New York-Newark-Jersey City (NY-NJ-PA)**WEB LINK:** [kimcorealty.com/111380](http://kimcorealty.com/111380)

## DEMOGRAPHICS

	 POPULATION	 DAYTIME POPULATION	 HOUSEHOLDS	 AVG. HH INCOME	 MED. HH INCOME	 PER CAPITA INCOME
2021 ESTIMATES						
1 MILE	21,782	17,031	7,488	\$156,219	\$137,349	\$53,741
3 MILE	185,613	141,641	62,493	\$149,700	\$129,008	\$50,509
5 MILE	401,874	343,047	134,103	\$144,761	\$122,727	\$48,489
10 MILE	1,116,880	1,259,001	366,178	\$144,732	\$115,214	\$47,920

## LEASING REPRESENTATIVE

**ROBERT WACHTLER**(516) 869-2654 | [rwachtler@kimcorealty.com](mailto:rwachtler@kimcorealty.com)



TENANT	SQFT
1 Roger M. Giuliani, DDS PC	1,577
2 Burrito Mariachi Mexican Grill	2,340
3 Available	13,965
4 JC Nail Spa	3,967
5 Seaqua Delicatessen	4,800
6 Teachers Federal Credit Union	2,950

■ Availability

### LEASING REPRESENTATIVE

**ROBERT WACHTLER**

(516) 869-2654 | [rwachtler@kimcorealty.com](mailto:rwachtler@kimcorealty.com)