

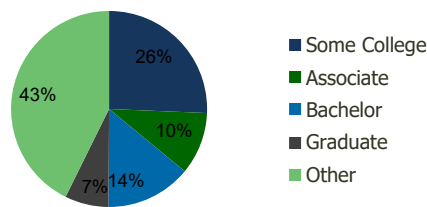
120730-Westover Square San Antonio, TX	1.00 Mile Radius	3.00 Mile Radius	5.00 Mile Radius	10.00 Mile Radius
---	---------------------	---------------------	---------------------	----------------------

Demographics (2021)

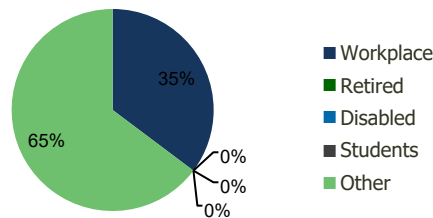
Current Population	18,200	132,825	315,025	992,513
Total Daytime Pop	14,432	136,612	320,481	1,024,391
Workplace Pop	5,647	48,152	120,631	384,363
Average Household Income	\$71,983	\$71,993	\$75,302	\$72,730
Median Household Income	\$62,921	\$59,622	\$62,158	\$57,071
Total Housing Units	6,272	45,138	103,683	341,456
Median Home Value	\$231,116	\$196,903	\$200,293	\$196,795
Bachelors Degree	15.9%	14.1%	15.2%	15.9%
Graduate Degree	9.3%	7.2%	7.3%	8.2%

Projections (2026)

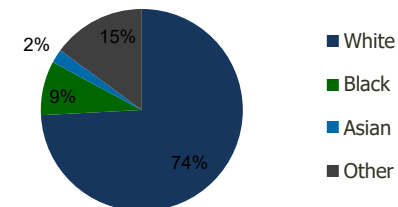
Projected Population	20,335	141,365	337,032	1,050,770
Projected 5 Year Pop Growth	2.2%	1.3%	1.4%	1.1%
Projected Households	6,989	47,976	110,818	360,869
Projected 5 Year Household Growth	2.2%	1.2%	1.3%	1.1%



Education (3-Mile)



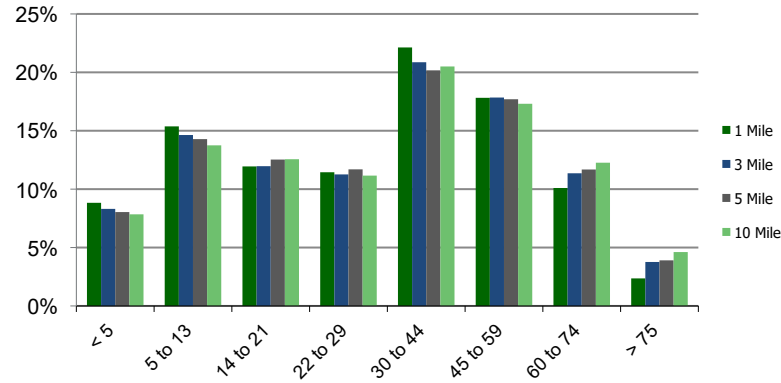
Daytime Population (3-Mile)



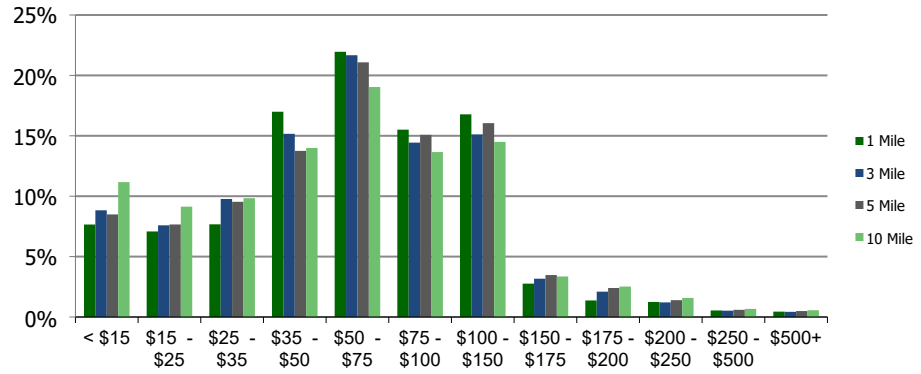
Ethnicity (3-Mile)

This report was produced using data from private and government sources deemed to be reliable and is herein provided without representation or warranty.

Population by Age Range



Household Income by Income Range (\$000)



120730-Westover Square
San Antonio, TX

1.00 Mile
Radius

3.00 Mile
Radius

5.00 Mile
Radius

10.00 Mile
Radius

	1.00 Mile Radius	3.00 Mile Radius	5.00 Mile Radius	10.00 Mile Radius
Population	Current Estimated Population	18,200	132,825	315,025
	2010 Census Population	12,441	107,559	254,014
	2000 Census Population	4,507	70,883	185,112
	Historical Annual Growth 2000 to 2010	10.69%	4.26%	3.21%
	Estimated Annual Growth 2010 to 2020	3.29%	1.81%	1.85%
	Projected Annual Growth 2020 to 2025	2.24%	1.25%	1.36%
Households	Current Estimated Households	6,272	45,138	103,683
	2010 Census Households	4,279	36,646	83,481
	2000 Census Households	1,705	23,797	59,101
	Historical Annual Growth 2000 to 2010	9.6%	4.4%	3.5%
	Estimated Annual Growth 2010 to 2020	3.3%	1.8%	1.9%
	Projected Annual Growth 2020 to 2025	2.2%	1.2%	1.3%
	Population per Household	2.9	2.9	3.0
Ethnicity	White	74.3%	74.2%	75.5%
	Black or African American	10.0%	8.7%	8.0%
	Asian & Pacific Islander	2.2%	2.2%	2.1%
	Other Races	13.6%	14.9%	14.4%
	Hispanic or Latino Population	67.2%	68.7%	67.6%
	Non Hispanic or Latino Population	32.8%	31.3%	32.4%

This report was produced using data from private and government sources deemed to be reliable and is herein provided without representation or warranty.