

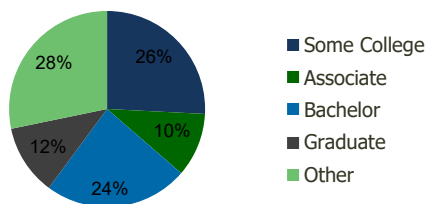
118730-Westwood Center San Antonio, TX	1.00 Mile Radius	3.00 Mile Radius	5.00 Mile Radius	10.00 Mile Radius
---	---------------------	---------------------	---------------------	----------------------

### Demographics (2021)

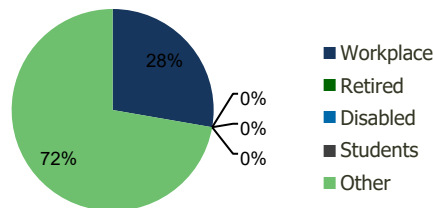
Current Population	19,016	120,287	285,933	754,273
Total Daytime Pop	13,100	93,371	245,155	793,605
Workplace Pop	5,713	25,892	75,189	305,548
Average Household Income	\$82,518	\$93,313	\$93,160	\$82,675
Median Household Income	\$68,222	\$80,044	\$79,460	\$66,119
Total Housing Units	6,427	40,139	96,808	269,330
Median Home Value	\$190,454	\$241,089	\$247,424	\$230,002
Bachelors Degree	21.1%	23.8%	22.5%	20.1%
Graduate Degree	8.0%	11.6%	12.5%	10.7%

### Projections (2026)

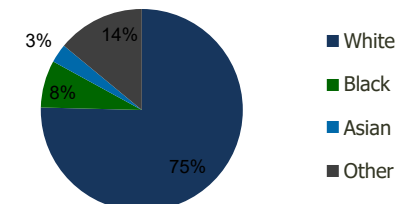
Projected Population	23,139	139,589	326,589	825,434
Projected 5 Year Pop Growth	4.0%	3.0%	2.7%	1.8%
Projected Households	7,890	46,666	110,504	294,018
Projected 5 Year Household Growth	4.2%	3.1%	2.7%	1.8%



Education (3-Mile)



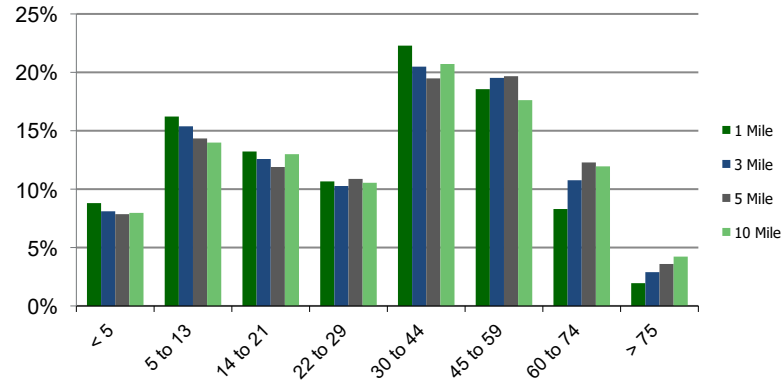
Daytime Population (3-Mile)



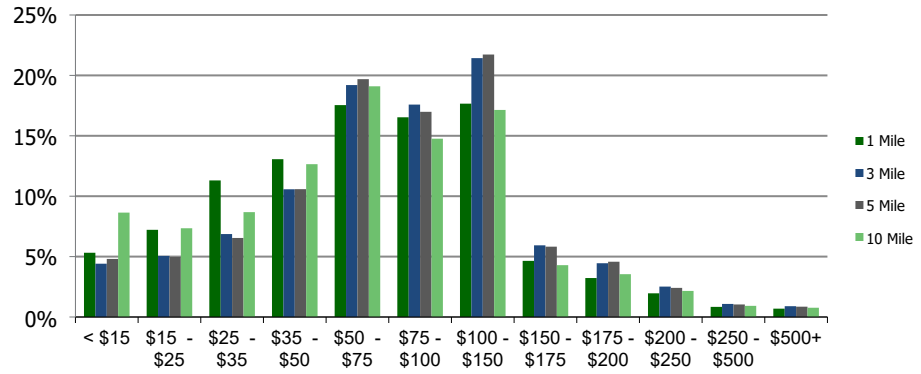
Ethnicity (3-Mile)

This report was produced using data from private and government sources deemed to be reliable and is herein provided without representation or warranty.

### Population by Age Range



### Household Income by Income Range (\$000)



### 118730-Westwood Center San Antonio, TX

1.00 Mile  
Radius

3.00 Mile  
Radius

5.00 Mile  
Radius

10.00 Mile  
Radius

	1.00 Mile Radius	3.00 Mile Radius	5.00 Mile Radius	10.00 Mile Radius
<b>Population</b>	Current Estimated Population	19,016	120,287	285,933
	2010 Census Population	9,993	79,096	199,977
	2000 Census Population	3,465	46,982	118,949
	Historical Annual Growth 2000 to 2010	11.17%	5.35%	5.33%
	Estimated Annual Growth 2010 to 2020	5.63%	3.63%	3.09%
	Projected Annual Growth 2020 to 2025	4.00%	3.02%	2.69%
<b>Households</b>	Current Estimated Households	6,427	40,139	96,808
	2010 Census Households	3,254	26,185	67,748
	2000 Census Households	1,059	14,931	39,246
	Historical Annual Growth 2000 to 2010	11.9%	5.8%	5.6%
	Estimated Annual Growth 2010 to 2020	6.0%	3.7%	3.1%
	Projected Annual Growth 2020 to 2025	4.2%	3.1%	2.7%
	Population per Household	3.0	3.0	3.0
<b>Ethnicity</b>	White	75.0%	75.4%	76.3%
	Black or African American	7.2%	7.6%	7.6%
	Asian & Pacific Islander	3.2%	3.0%	3.1%
	Other Races	14.7%	14.0%	13.1%
	Hispanic or Latino Population	62.4%	57.5%	56.1%
	Non Hispanic or Latino Population	37.6%	42.5%	43.9%

This report was produced using data from private and government sources deemed to be reliable and is herein provided without representation or warranty.