

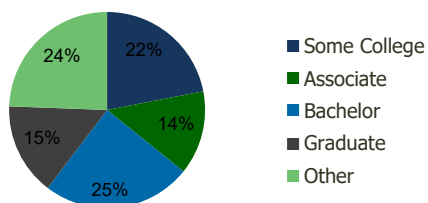
Stevens Ranch San Antonio, TX	1.00 Mile Radius	3.00 Mile Radius	5.00 Mile Radius	10.00 Mile Radius
----------------------------------	---------------------	---------------------	---------------------	----------------------

## Demographics (2020)

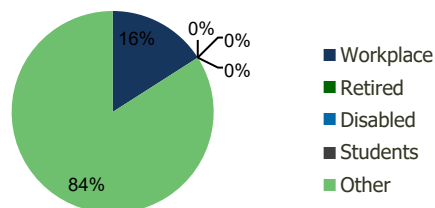
Current Population	3,062	26,153	76,341	405,721
Total Daytime Pop	3,610	14,373	55,543	357,450
Workplace Pop	784	2,293	8,791	106,276
Average Household Income	\$106,591	\$105,008	\$100,039	\$82,969
Median Household Income	\$91,357	\$89,565	\$85,498	\$68,836
Total Housing Units	1,021	8,563	24,979	133,084
Median Home Value	\$265,482	\$248,712	\$240,204	\$194,580
Bachelors Degree	26.6%	24.6%	22.3%	18.5%
Graduate Degree	13.5%	15.2%	13.7%	9.6%

## Projections (2025)

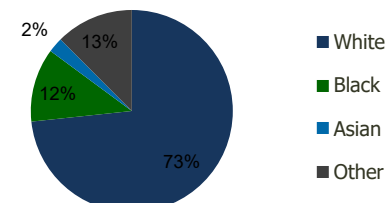
Projected Population	4,324	35,910	101,537	473,569
Projected 5 Year Pop Growth	7.1%	6.5%	5.9%	3.1%
Projected Households	1,442	11,784	33,332	155,553
Projected 5 Year Household Growth	7.2%	6.6%	5.9%	3.2%



Education (3-Mile)



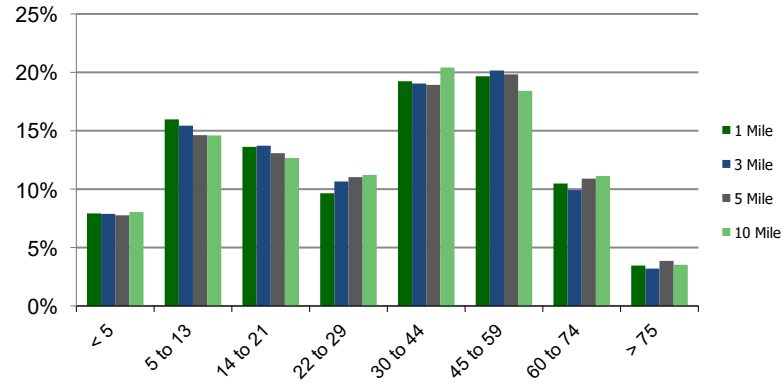
Daytime Population (3-Mile)



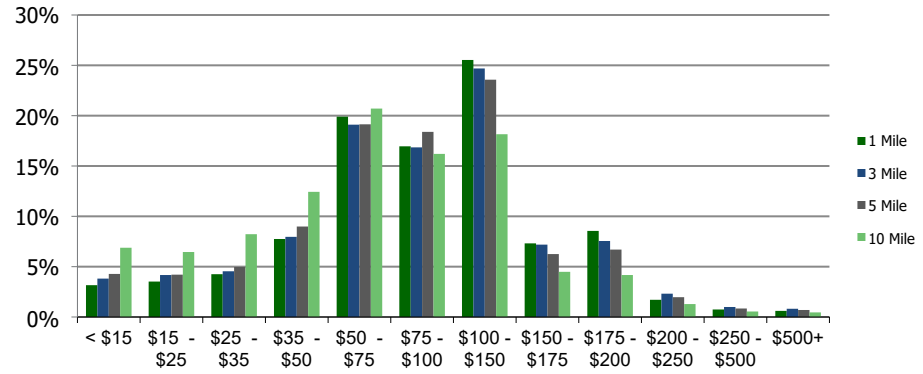
Ethnicity (3-Mile)

This report was produced using data from private and government sources deemed to be reliable and is herein provided without representation or warranty.

### Population by Age Range



### Household Income by Income Range (\$000)



### Stevens Ranch San Antonio, TX

1.00 Mile  
Radius

3.00 Mile  
Radius

5.00 Mile  
Radius

10.00 Mile  
Radius

	1.00 Mile Radius	3.00 Mile Radius	5.00 Mile Radius	10.00 Mile Radius
<b>Population</b>				
Current Estimated Population	3,062	26,153	76,341	405,721
2010 Census Population	1,238	12,448	39,096	284,985
2000 Census Population	299	2,847	15,469	179,378
Historical Annual Growth 2000 to 2010	15.26%	15.90%	9.71%	4.74%
Estimated Annual Growth 2010 to 2020	8.79%	7.15%	6.42%	3.34%
Projected Annual Growth 2020 to 2025	7.14%	6.55%	5.87%	3.14%
<b>Households</b>				
Current Estimated Households	1,021	8,563	24,979	133,084
2010 Census Households	406	3,991	12,522	92,806
2000 Census Households	111	1,063	4,835	57,097
Historical Annual Growth 2000 to 2010	13.8%	14.1%	10.0%	5.0%
Estimated Annual Growth 2010 to 2020	8.9%	7.4%	6.6%	3.4%
Projected Annual Growth 2020 to 2025	7.2%	6.6%	5.9%	3.2%
Population per Household	3.0	3.0	3.0	3.0
<b>Ethnicity</b>				
White	75.1%	73.3%	74.0%	75.4%
Black or African American	10.8%	11.8%	10.2%	8.1%
Asian & Pacific Islander	2.0%	2.4%	2.6%	2.4%
Other Races	12.1%	12.5%	13.2%	14.2%
Hispanic or Latino Population	43.6%	46.2%	50.4%	60.7%
Non Hispanic or Latino Population	56.4%	53.8%	49.6%	39.3%

This report was produced using data from private and government sources deemed to be reliable and is herein provided without representation or warranty.