

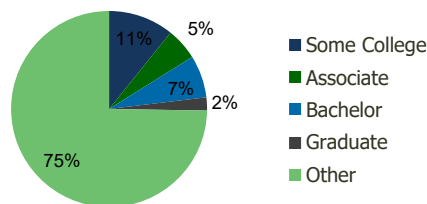
120480-Starr Plaza Rio Grande City, TX	1.00 Mile Radius	3.00 Mile Radius	5.00 Mile Radius	10.00 Mile Radius
---	---------------------	---------------------	---------------------	----------------------

Demographics (2021)

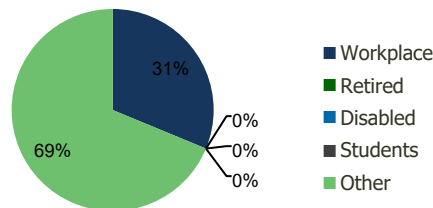
Current Population	1,191	18,567	27,055	39,483
Total Daytime Pop	3,016	19,278	26,623	37,103
Workplace Pop	1,828	6,022	7,158	8,348
Average Household Income	\$43,109	\$49,354	\$55,764	\$57,827
Median Household Income	\$21,172	\$34,653	\$35,946	\$37,350
Total Housing Units	344	5,036	7,338	10,725
Median Home Value	\$97,465	\$117,303	\$122,249	\$123,918
Bachelors Degree	7.3%	7.0%	7.1%	6.8%
Graduate Degree	2.2%	2.2%	3.2%	3.2%

Projections (2026)

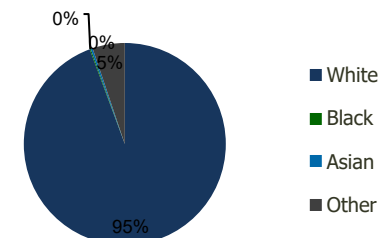
Projected Population	1,269	19,892	29,117	42,302
Projected 5 Year Pop Growth	1.3%	1.4%	1.5%	1.4%
Projected Households	368	5,409	7,910	11,502
Projected 5 Year Household Growth	1.3%	1.4%	1.5%	1.4%



Education (3-Mile)



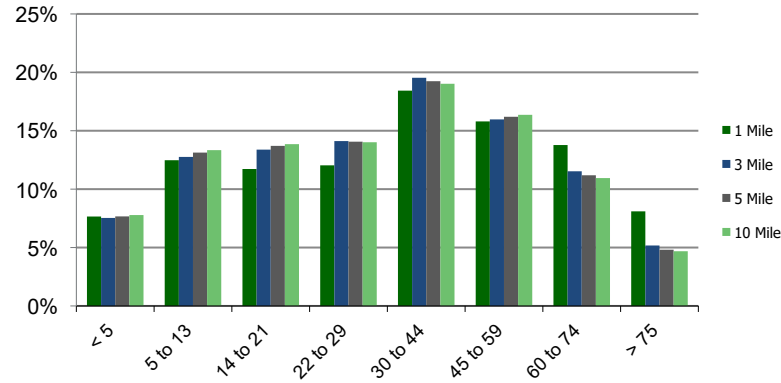
Daytime Population (3-Mile)



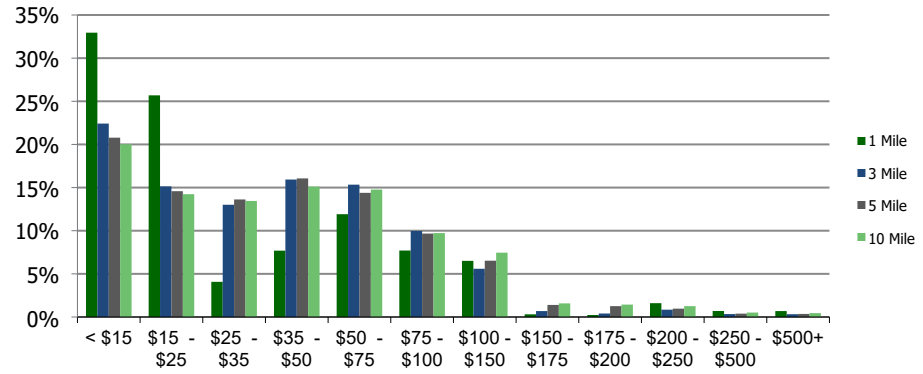
Ethnicity (3-Mile)

This report was produced using data from private and government sources deemed to be reliable and is herein provided without representation or warranty.

Population by Age Range



Household Income by Income Range (\$000)



120480-Starr Plaza
Rio Grande City, TX

1.00 Mile
Radius

3.00 Mile
Radius

5.00 Mile
Radius

10.00 Mile
Radius

	1.00 Mile Radius	3.00 Mile Radius	5.00 Mile Radius	10.00 Mile Radius
Population				
Current Estimated Population	1,191	18,567	27,055	39,483
2010 Census Population	1,277	16,549	23,284	34,054
2000 Census Population	1,238	15,007	20,191	28,988
Historical Annual Growth 2000 to 2010	0.31%	0.98%	1.44%	1.62%
Estimated Annual Growth 2010 to 2020	-0.59%	0.98%	1.29%	1.27%
Projected Annual Growth 2020 to 2025	1.29%	1.39%	1.48%	1.39%
Households				
Current Estimated Households	344	5,036	7,338	10,725
2010 Census Households	367	4,488	6,315	9,255
2000 Census Households	355	4,036	5,347	7,610
Historical Annual Growth 2000 to 2010	0.3%	1.1%	1.7%	2.0%
Estimated Annual Growth 2010 to 2020	-0.5%	1.0%	1.3%	1.3%
Projected Annual Growth 2020 to 2025	1.3%	1.4%	1.5%	1.4%
Population per Household	3.3	3.5	3.6	3.6
Ethnicity				
White	94.9%	94.4%	94.0%	94.6%
Black or African American	0.3%	0.2%	0.1%	0.1%
Asian & Pacific Islander	0.4%	0.3%	0.2%	0.2%
Other Races	4.5%	5.2%	5.6%	5.1%
Hispanic or Latino Population	95.1%	96.2%	96.8%	97.3%
Non Hispanic or Latino Population	4.9%	3.8%	3.2%	2.7%

This report was produced using data from private and government sources deemed to be reliable and is herein provided without representation or warranty.