

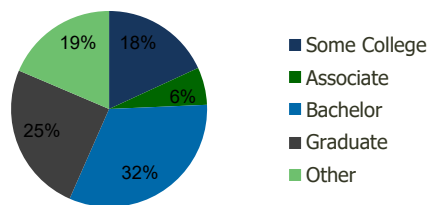
Raleigh Hills Plaza Portland, OR	1.00 Mile Radius	3.00 Mile Radius	5.00 Mile Radius	10.00 Mile Radius
-------------------------------------	---------------------	---------------------	---------------------	----------------------

## Demographics (2020)

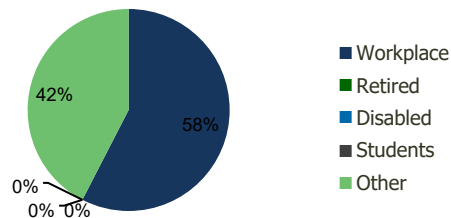
Current Population	12,479	113,748	353,081	1,161,328
Total Daytime Pop	12,520	140,021	598,135	1,406,442
Workplace Pop	5,803	80,611	319,114	698,842
Average Household Income	\$125,704	\$118,333	\$113,846	\$107,147
Median Household Income	\$84,278	\$83,743	\$81,927	\$80,764
Total Housing Units	5,738	49,684	161,314	489,532
Median Home Value	\$816,902	\$652,350	\$634,511	\$574,849
Bachelors Degree	37.5%	32.3%	33.5%	31.0%
Graduate Degree	24.8%	24.8%	23.9%	21.0%

## Projections (2025)

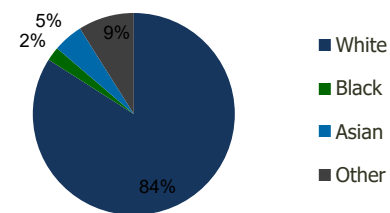
Projected Population	13,006	119,587	379,060	1,245,472
Projected 5 Year Pop Growth	0.8%	1.0%	1.4%	1.4%
Projected Households	5,979	52,239	174,047	526,510
Projected 5 Year Household Growth	0.8%	1.0%	1.5%	1.5%



Education (3-Mile)



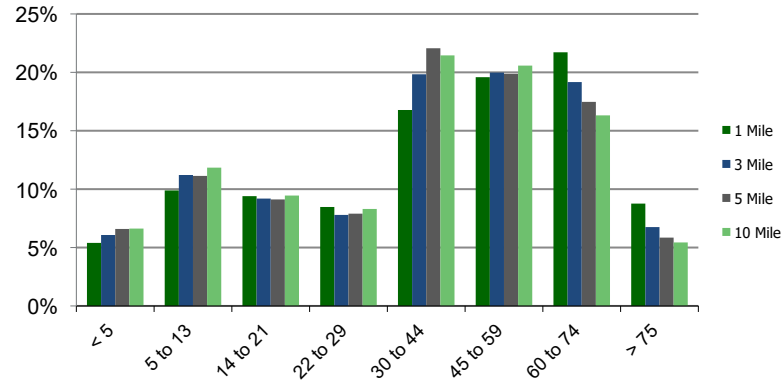
Daytime Population (3-Mile)



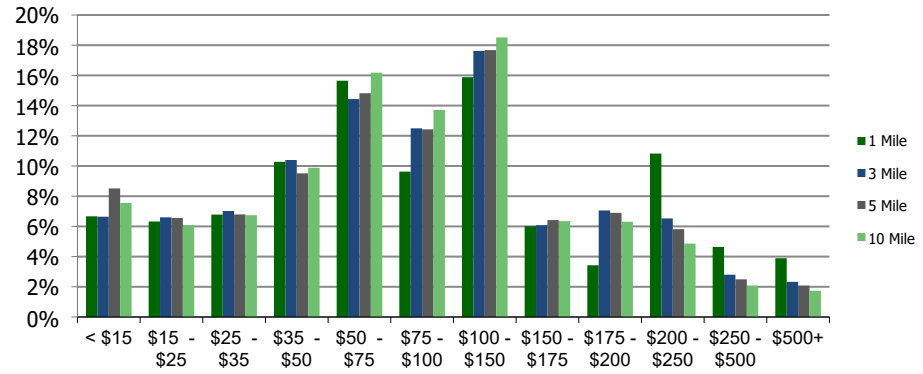
Ethnicity (3-Mile)

This report was produced using data from private and government sources deemed to be reliable and is herein provided without representation or warranty.

**Population by Age Range**



**Household Income by Income Range (\$000)**



**Raleigh Hills Plaza**  
Portland, OR

1.00 Mile  
Radius

3.00 Mile  
Radius

5.00 Mile  
Radius

10.00 Mile  
Radius

	1.00 Mile Radius	3.00 Mile Radius	5.00 Mile Radius	10.00 Mile Radius
<b>Population</b>				
Current Estimated Population	12,479	113,748	353,081	1,161,328
2010 Census Population	11,851	106,466	314,848	1,030,572
2000 Census Population	11,527	99,519	280,973	922,148
Historical Annual Growth 2000 to 2010	0.28%	0.68%	1.14%	1.12%
Estimated Annual Growth 2010 to 2020	0.48%	0.62%	1.07%	1.12%
Projected Annual Growth 2020 to 2025	0.83%	1.01%	1.43%	1.41%
<b>Households</b>				
Current Estimated Households	5,738	49,684	161,314	489,532
2010 Census Households	5,454	46,455	141,871	430,783
2000 Census Households	5,219	43,359	125,439	381,542
Historical Annual Growth 2000 to 2010	0.4%	0.7%	1.2%	1.2%
Estimated Annual Growth 2010 to 2020	0.5%	0.6%	1.2%	1.2%
Projected Annual Growth 2020 to 2025	0.8%	1.0%	1.5%	1.5%
Population per Household	2.1	2.3	2.1	2.3
<b>Ethnicity</b>				
White	86.6%	84.0%	81.1%	78.4%
Black or African American	1.6%	2.2%	2.4%	3.6%
Asian & Pacific Islander	5.5%	4.8%	7.4%	8.5%
Other Races	6.2%	9.0%	9.2%	9.6%
Hispanic or Latino Population	5.1%	11.3%	10.6%	10.6%
Non Hispanic or Latino Population	94.9%	88.7%	89.4%	89.4%

This report was produced using data from private and government sources deemed to be reliable and is herein provided without representation or warranty.