

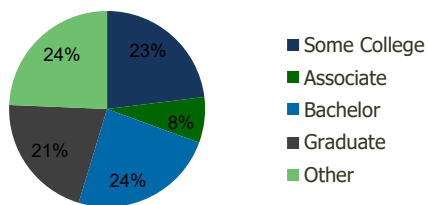
120110-North Towne Plaza - Albuquerque, NM	1.00 Mile Radius	3.00 Mile Radius	5.00 Mile Radius	10.00 Mile Radius
---	---------------------	---------------------	---------------------	----------------------

## Demographics (2021)

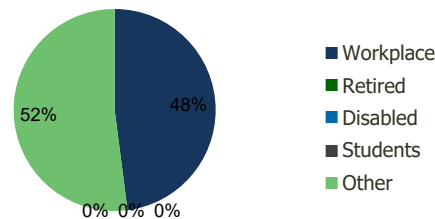
Current Population	11,028	120,898	244,576	569,358
Total Daytime Pop	11,051	143,451	287,465	669,056
Workplace Pop	5,996	68,798	138,743	275,113
Average Household Income	\$84,819	\$85,984	\$85,325	\$78,968
Median Household Income	\$59,924	\$62,853	\$60,208	\$56,818
Total Housing Units	5,179	54,016	107,596	238,934
Median Home Value	\$355,876	\$315,137	\$308,781	\$285,821
Bachelors Degree	25.5%	24.1%	22.1%	20.3%
Graduate Degree	21.5%	21.0%	20.6%	17.3%

## Projections (2026)

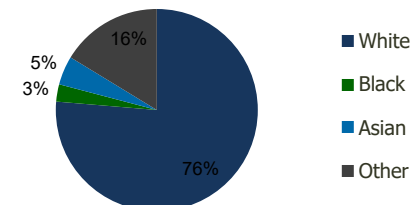
Projected Population	11,352	125,812	254,682	599,401
Projected 5 Year Pop Growth	0.6%	0.8%	0.8%	1.0%
Projected Households	5,332	56,185	112,016	251,405
Projected 5 Year Household Growth	0.6%	0.8%	0.8%	1.0%



Education (3-Mile)



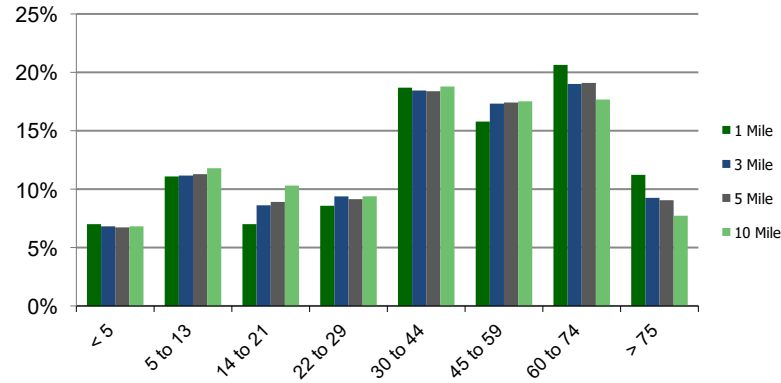
Daytime Population (3-Mile)



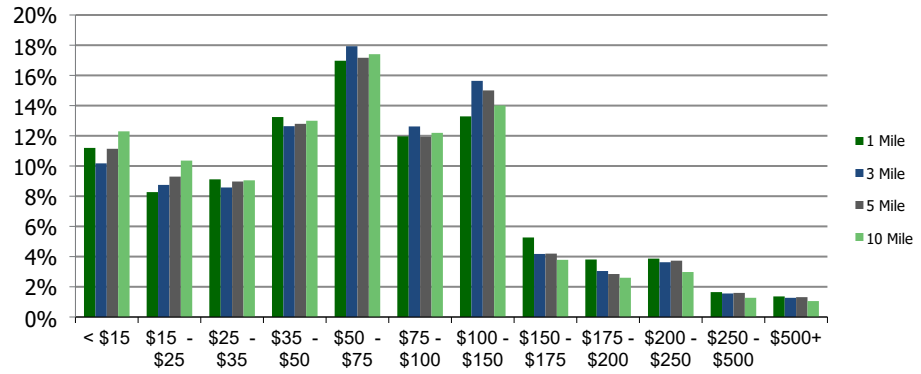
Ethnicity (3-Mile)

This report was produced using data from private and government sources deemed to be reliable and is herein provided without representation or warranty.

**Population by Age Range**



**Household Income by Income Range (\$000)**



**120110-North Towne Plaza - Albuquerque, NM**      1.00 Mile Radius      3.00 Mile Radius      5.00 Mile Radius      10.00 Mile Radius

	1.00 Mile Radius	3.00 Mile Radius	5.00 Mile Radius	10.00 Mile Radius
<b>Population</b>				
Current Estimated Population	11,028	120,898	244,576	569,358
2010 Census Population	11,627	121,513	245,127	554,838
2000 Census Population	12,041	115,923	230,899	497,821
Historical Annual Growth 2000 to 2010	-0.35%	0.47%	0.60%	1.09%
Estimated Annual Growth 2010 to 2020	-0.45%	-0.04%	-0.02%	0.22%
Projected Annual Growth 2020 to 2025	0.58%	0.80%	0.81%	1.03%
<b>Households</b>				
Current Estimated Households	5,179	54,016	107,596	238,934
2010 Census Households	5,429	54,532	108,171	233,756
2000 Census Households	5,337	50,145	98,565	203,225
Historical Annual Growth 2000 to 2010	0.2%	0.8%	0.9%	1.4%
Estimated Annual Growth 2010 to 2020	-0.4%	-0.1%	0.0%	0.2%
Projected Annual Growth 2020 to 2025	0.6%	0.8%	0.8%	1.0%
Population per Household	2.1	2.2	2.3	2.3
<b>Ethnicity</b>				
White	79.4%	76.3%	75.8%	73.8%
Black or African American	1.9%	2.8%	2.7%	3.1%
Asian & Pacific Islander	3.6%	4.6%	3.7%	2.8%
Other Races	15.1%	16.3%	17.7%	20.3%
Hispanic or Latino Population	27.4%	30.9%	34.8%	43.6%
Non Hispanic or Latino Population	72.6%	69.1%	65.2%	56.4%

This report was produced using data from private and government sources deemed to be reliable and is herein provided without representation or warranty.