

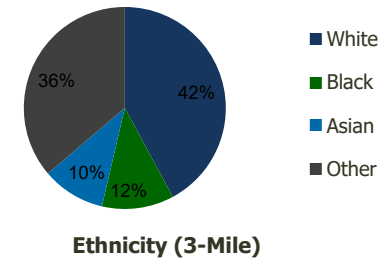
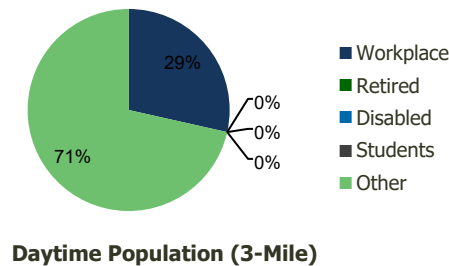
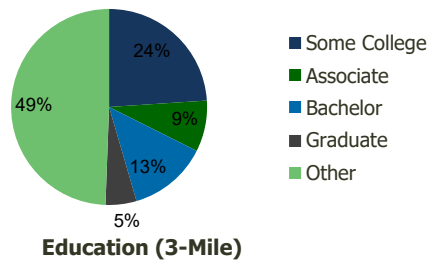
119920-Centerwood Plaza Bellflower, CA	1.00 Mile Radius	3.00 Mile Radius	5.00 Mile Radius	10.00 Mile Radius
---	---------------------	---------------------	---------------------	----------------------

Demographics (2021)

Current Population	40,181	293,910	748,288	2,751,529
Total Daytime Pop	28,976	269,064	731,697	2,781,411
Workplace Pop	7,852	76,718	214,557	951,998
Average Household Income	\$75,473	\$82,358	\$87,422	\$85,093
Median Household Income	\$62,052	\$67,836	\$70,143	\$65,592
Total Housing Units	11,703	84,457	211,443	798,016
Median Home Value	\$614,143	\$671,510	\$692,401	\$697,027
Bachelors Degree	11.9%	13.1%	14.2%	14.5%
Graduate Degree	4.1%	5.1%	5.8%	6.4%

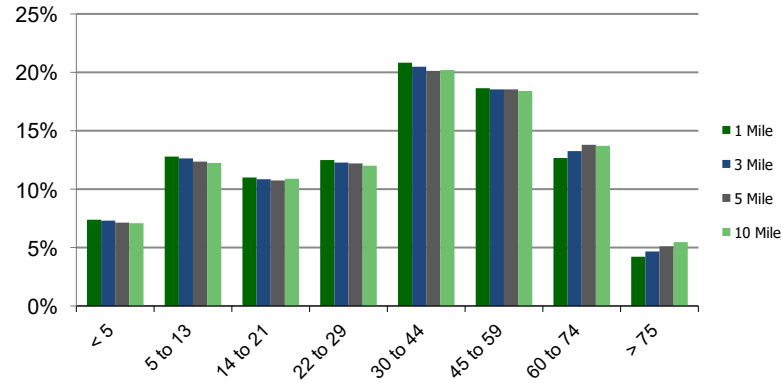
Projections (2026)

Projected Population	40,832	297,441	756,742	2,783,435
Projected 5 Year Pop Growth	0.3%	0.2%	0.2%	0.2%
Projected Households	11,895	85,474	213,835	807,107
Projected 5 Year Household Growth	0.3%	0.2%	0.2%	0.2%

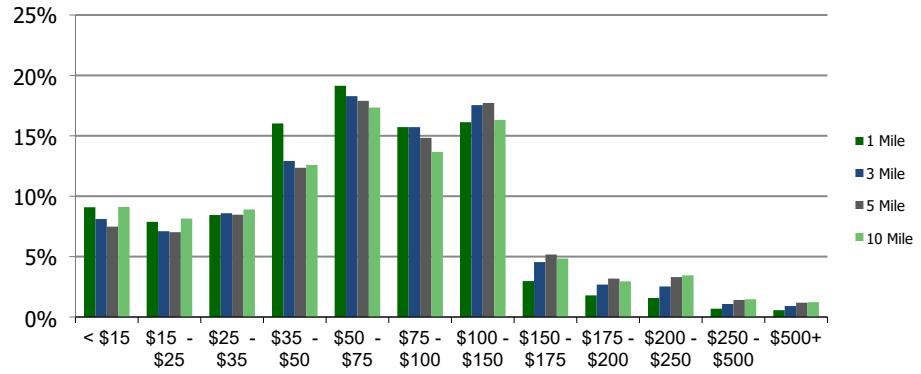


This report was produced using data from private and government sources deemed to be reliable and is herein provided without representation or warranty.

Population by Age Range



Household Income by Income Range (\$000)



119920-Centerwood Plaza

Bellflower, CA

1.00 Mile Radius

3.00 Mile Radius

5.00 Mile Radius

10.00 Mile Radius

	1.00 Mile Radius	3.00 Mile Radius	5.00 Mile Radius	10.00 Mile Radius
Population				
Current Estimated Population	40,181	293,910	748,288	2,751,529
2010 Census Population	38,977	293,523	746,966	2,718,986
2000 Census Population	37,864	286,802	732,911	2,671,483
Historical Annual Growth 2000 to 2010	0.29%	0.23%	0.19%	0.18%
Estimated Annual Growth 2010 to 2020	0.26%	0.01%	0.02%	0.10%
Projected Annual Growth 2020 to 2025	0.32%	0.24%	0.22%	0.23%
Households				
Current Estimated Households	11,703	84,457	211,443	798,016
2010 Census Households	11,345	84,408	211,003	787,855
2000 Census Households	11,201	84,104	210,015	778,267
Historical Annual Growth 2000 to 2010	0.1%	0.0%	0.0%	0.1%
Estimated Annual Growth 2010 to 2020	0.3%	0.0%	0.0%	0.1%
Projected Annual Growth 2020 to 2025	0.3%	0.2%	0.2%	0.2%
Population per Household	3.4	3.5	3.5	3.4
Ethnicity				
White	40.1%	42.1%	44.2%	46.6%
Black or African American	10.8%	11.5%	10.5%	10.1%
Asian & Pacific Islander	8.4%	10.1%	10.8%	10.9%
Other Races	40.6%	36.2%	34.6%	32.3%
Hispanic or Latino Population	65.8%	61.2%	61.9%	62.1%
Non Hispanic or Latino Population	34.2%	38.8%	38.1%	37.9%

This report was produced using data from private and government sources deemed to be reliable and is herein provided without representation or warranty.