

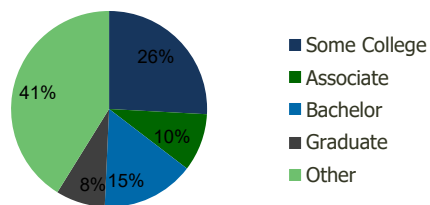
118850-Stony Point Plaza Santa Rosa, CA	1.00 Mile Radius	3.00 Mile Radius	5.00 Mile Radius	10.00 Mile Radius
--	---------------------	---------------------	---------------------	----------------------

Demographics (2021)

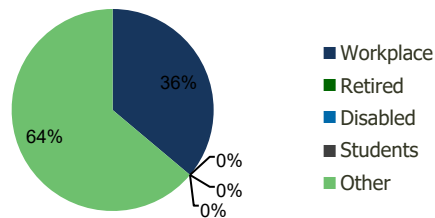
Current Population	22,370	117,554	182,311	327,262
Total Daytime Pop	19,812	157,904	223,138	354,702
Workplace Pop	6,647	57,027	84,074	121,847
Average Household Income	\$88,488	\$87,625	\$100,623	\$107,052
Median Household Income	\$76,328	\$70,591	\$79,064	\$83,101
Total Housing Units	7,094	40,921	66,876	123,542
Median Home Value	\$635,628	\$692,030	\$804,421	\$849,528
Bachelors Degree	12.9%	15.3%	18.9%	21.0%
Graduate Degree	7.4%	8.1%	11.4%	12.7%

Projections (2026)

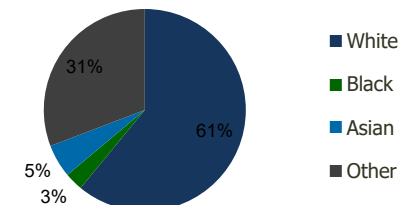
Projected Population	22,923	119,993	185,315	333,552
Projected 5 Year Pop Growth	0.5%	0.4%	0.3%	0.4%
Projected Households	7,270	41,770	67,944	125,945
Projected 5 Year Household Growth	0.5%	0.4%	0.3%	0.4%



Education (3-Mile)



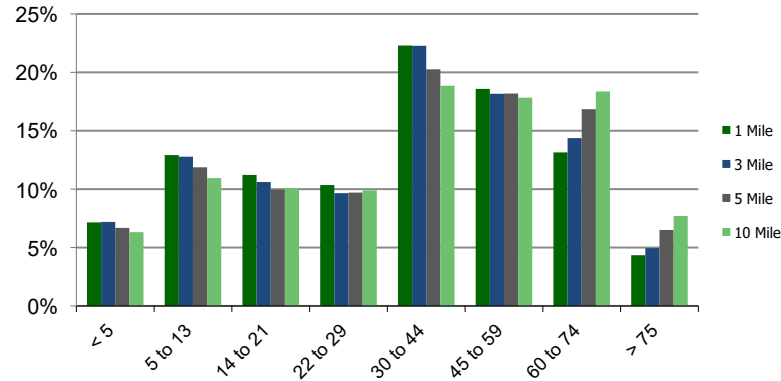
Daytime Population (3-Mile)



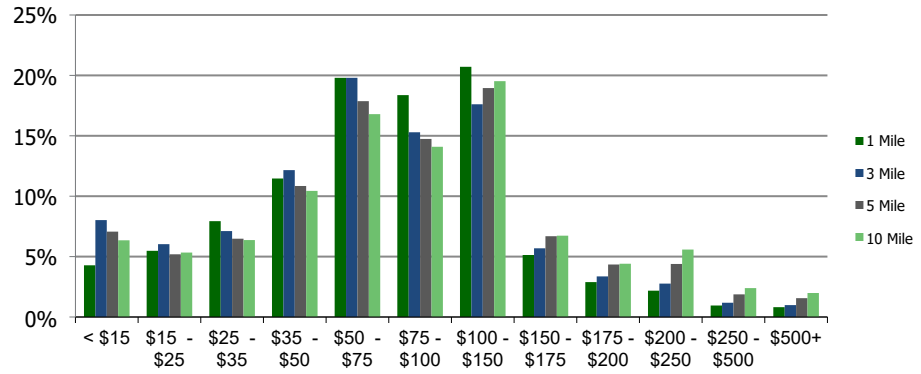
Ethnicity (3-Mile)

This report was produced using data from private and government sources deemed to be reliable and is herein provided without representation or warranty.

Population by Age Range



Household Income by Income Range (\$000)



	1.00 Mile Radius	3.00 Mile Radius	5.00 Mile Radius	10.00 Mile Radius
118850-Stony Point Plaza				
Santa Rosa, CA				

Population	Current Estimated Population	22,370	117,554	182,311	327,262
	2010 Census Population	21,606	116,651	182,153	324,767
	2000 Census Population	18,444	102,670	163,740	301,536
	Historical Annual Growth 2000 to 2010	1.60%	1.28%	1.07%	0.74%
	Estimated Annual Growth 2010 to 2020	0.30%	0.07%	0.01%	0.07%
	Projected Annual Growth 2020 to 2025	0.49%	0.41%	0.33%	0.38%
Households	Current Estimated Households	7,094	40,921	66,876	123,542
	2010 Census Households	6,830	40,482	66,697	122,319
	2000 Census Households	5,898	36,043	60,124	112,322
	Historical Annual Growth 2000 to 2010	1.5%	1.2%	1.0%	0.9%
	Estimated Annual Growth 2010 to 2020	0.3%	0.1%	0.0%	0.1%
	Projected Annual Growth 2020 to 2025	0.5%	0.4%	0.3%	0.4%
	Population per Household	3.1	2.8	2.7	2.6
Ethnicity	White	54.0%	61.0%	68.1%	73.7%
	Black or African American	2.6%	2.9%	2.5%	2.0%
	Asian & Pacific Islander	6.2%	5.3%	5.0%	4.5%
	Other Races	37.2%	30.8%	24.4%	19.9%
	Hispanic or Latino Population	47.2%	41.4%	32.6%	27.1%
	Non Hispanic or Latino Population	52.8%	58.6%	67.4%	72.9%

This report was produced using data from private and government sources deemed to be reliable and is herein provided without representation or warranty.