

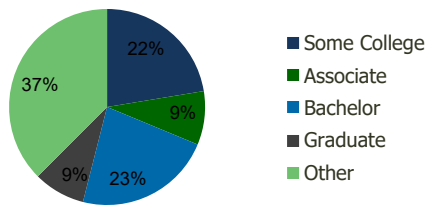
118670-Tomball Marketplace Tomball, TX	1.00 Mile Radius	3.00 Mile Radius	5.00 Mile Radius	10.00 Mile Radius
---	---------------------	---------------------	---------------------	----------------------

Demographics (2021)

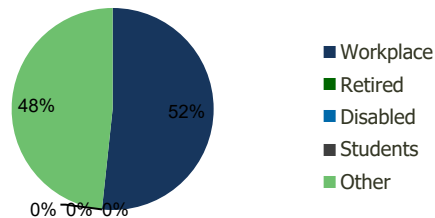
Current Population	4,283	24,108	92,311	546,741
Total Daytime Pop	10,708	31,018	76,534	433,949
Workplace Pop	7,000	16,032	25,296	131,827
Average Household Income	\$92,265	\$104,417	\$119,878	\$131,080
Median Household Income	\$63,461	\$77,090	\$93,565	\$100,574
Total Housing Units	1,821	9,199	31,613	187,803
Median Home Value	\$242,327	\$265,282	\$292,296	\$307,644
Bachelors Degree	18.4%	22.7%	28.2%	30.4%
Graduate Degree	6.7%	8.5%	11.5%	14.7%

Projections (2026)

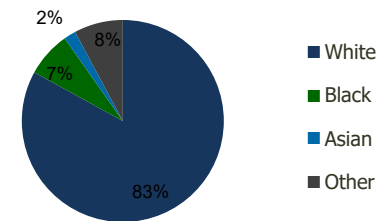
Projected Population	4,906	28,180	107,866	622,509
Projected 5 Year Pop Growth	2.8%	3.2%	3.2%	2.6%
Projected Households	2,101	10,796	36,997	212,887
Projected 5 Year Household Growth	2.9%	3.3%	3.2%	2.5%



Education (3-Mile)



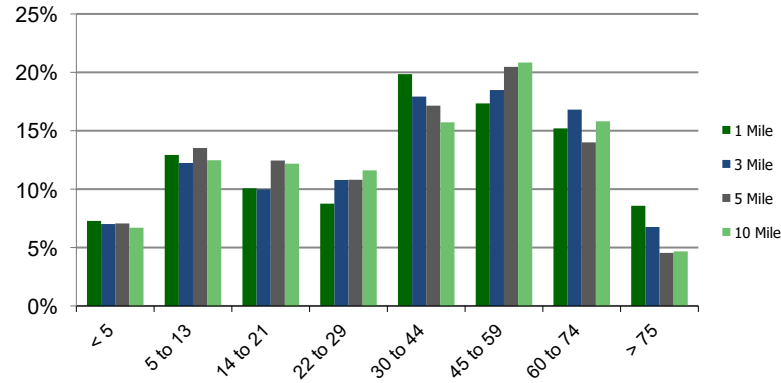
Daytime Population (3-Mile)



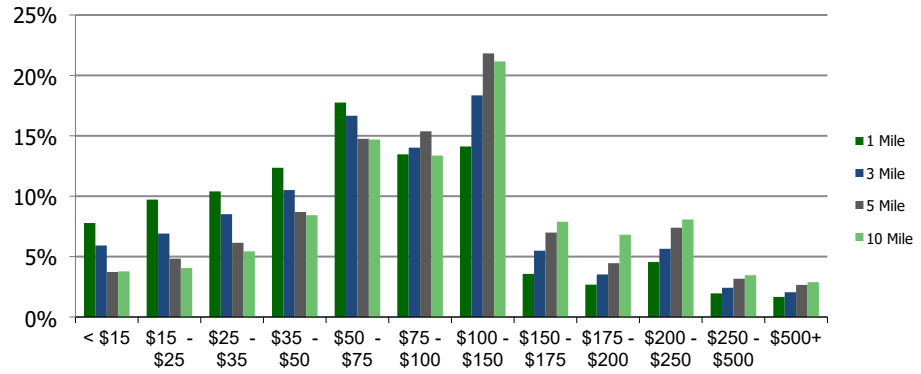
Ethnicity (3-Mile)

This report was produced using data from private and government sources deemed to be reliable and is herein provided without representation or warranty.

Population by Age Range



Household Income by Income Range (\$000)



118670-Tomball Marketplace
Tomball, TX

1.00 Mile
Radius

3.00 Mile
Radius

5.00 Mile
Radius

10.00 Mile
Radius

	1.00 Mile Radius	3.00 Mile Radius	5.00 Mile Radius	10.00 Mile Radius
Population	Current Estimated Population	4,283	24,108	92,311
	2010 Census Population	3,230	16,822	60,741
	2000 Census Population	3,018	13,311	28,396
	Historical Annual Growth 2000 to 2010	0.68%	2.37%	7.90%
	Estimated Annual Growth 2010 to 2020	2.43%	3.11%	3.63%
	Projected Annual Growth 2020 to 2025	2.75%	3.17%	3.16%
Households	Current Estimated Households	1,821	9,199	31,613
	2010 Census Households	1,358	6,392	20,790
	2000 Census Households	1,198	4,965	10,021
	Historical Annual Growth 2000 to 2010	1.3%	2.6%	7.6%
	Estimated Annual Growth 2010 to 2020	2.5%	3.1%	3.6%
	Projected Annual Growth 2020 to 2025	2.9%	3.3%	3.2%
	Population per Household	2.3	2.6	2.9
Ethnicity	White	82.6%	83.0%	77.6%
	Black or African American	7.3%	7.2%	8.1%
	Asian & Pacific Islander	0.7%	1.9%	5.8%
	Other Races	9.4%	7.8%	8.5%
	Hispanic or Latino Population	30.5%	23.0%	21.9%
	Non Hispanic or Latino Population	69.5%	77.0%	78.1%

This report was produced using data from private and government sources deemed to be reliable and is herein provided without representation or warranty.