

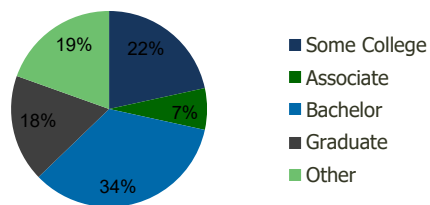
118590-Scottsdale Waterfront Scottsdale, AZ	1.00 Mile Radius	3.00 Mile Radius	5.00 Mile Radius	10.00 Mile Radius
--	---------------------	---------------------	---------------------	----------------------

Demographics (2021)

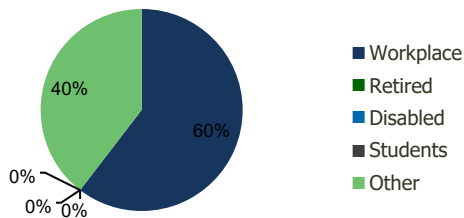
Current Population	14,926	94,166	201,445	1,034,534
Total Daytime Pop	36,215	127,957	292,586	1,751,772
Workplace Pop	29,317	77,322	167,408	950,225
Average Household Income	\$126,738	\$119,606	\$113,326	\$93,267
Median Household Income	\$77,552	\$78,107	\$69,227	\$62,759
Total Housing Units	8,750	45,850	93,501	430,151
Median Home Value	\$749,187	\$799,103	\$774,685	\$673,493
Bachelors Degree	39.1%	34.4%	29.9%	24.5%
Graduate Degree	22.0%	17.7%	17.2%	15.4%

Projections (2026)

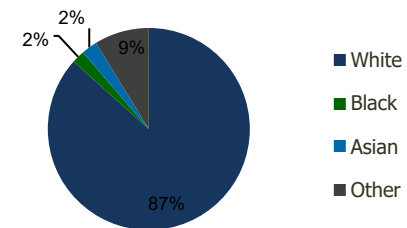
Projected Population	16,172	98,579	209,612	1,081,550
Projected 5 Year Pop Growth	1.6%	0.9%	0.8%	0.9%
Projected Households	9,502	48,125	97,480	451,561
Projected 5 Year Household Growth	1.7%	1.0%	0.8%	1.0%



Education (3-Mile)



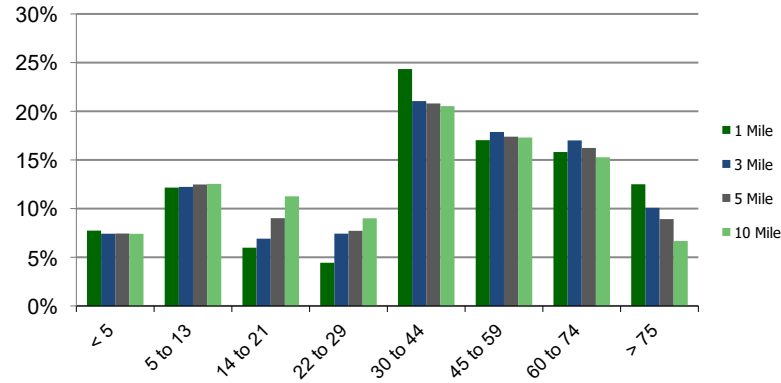
Daytime Population (3-Mile)



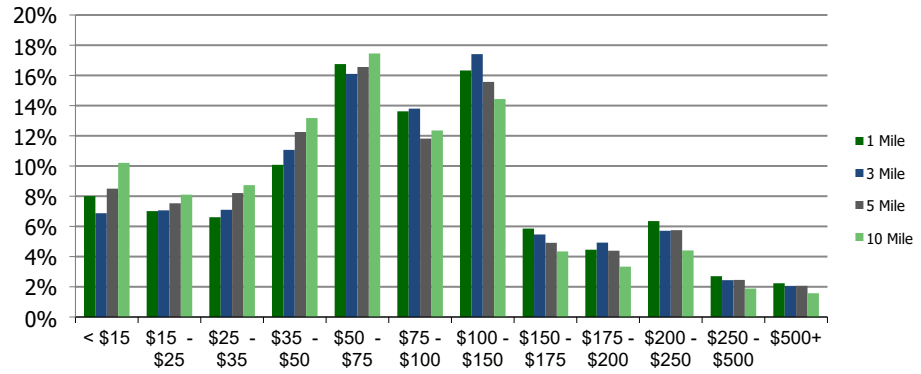
Ethnicity (3-Mile)

This report was produced using data from private and government sources deemed to be reliable and is herein provided without representation or warranty.

Population by Age Range



Household Income by Income Range (\$000)



118590-Scottsdale Waterfront Scottsdale, AZ	1.00 Mile Radius	3.00 Mile Radius	5.00 Mile Radius	10.00 Mile Radius
---	-------------------------	-------------------------	-------------------------	--------------------------

	1.00 Mile Radius	3.00 Mile Radius	5.00 Mile Radius	10.00 Mile Radius	
Population	Current Estimated Population	14,926	94,166	201,445	1,034,534
	2010 Census Population	12,188	82,760	178,964	915,628
	2000 Census Population	12,530	88,164	185,819	959,266
	Historical Annual Growth 2000 to 2010	-0.28%	-0.63%	-0.38%	-0.46%
	Estimated Annual Growth 2010 to 2020	1.74%	1.10%	1.01%	1.04%
	Projected Annual Growth 2020 to 2025	1.62%	0.92%	0.80%	0.89%
Households	Current Estimated Households	8,750	45,850	93,501	430,151
	2010 Census Households	7,111	40,115	82,875	377,621
	2000 Census Households	6,939	41,234	83,443	379,755
	Historical Annual Growth 2000 to 2010	0.2%	-0.3%	-0.1%	-0.1%
	Estimated Annual Growth 2010 to 2020	1.8%	1.1%	1.0%	1.1%
	Projected Annual Growth 2020 to 2025	1.7%	1.0%	0.8%	1.0%
	Population per Household	1.7	2.0	2.1	2.4
Ethnicity	White	87.5%	86.6%	80.1%	74.3%
	Black or African American	2.1%	2.1%	4.1%	5.4%
	Asian & Pacific Islander	2.6%	2.5%	2.6%	3.5%
	Other Races	7.8%	8.8%	13.1%	16.8%
	Hispanic or Latino Population	12.5%	15.7%	21.8%	28.6%
	Non Hispanic or Latino Population	87.5%	84.3%	78.2%	71.4%

This report was produced using data from private and government sources deemed to be reliable and is herein provided without representation or warranty.