

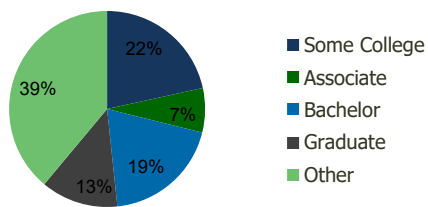
118290-Camelback Village Square Phoenix, AZ	1.00 Mile Radius	3.00 Mile Radius	5.00 Mile Radius	10.00 Mile Radius
--	---------------------	---------------------	---------------------	----------------------

Demographics (2021)

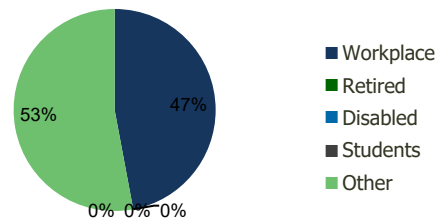
Current Population	22,736	183,978	463,111	1,438,390
Total Daytime Pop	26,130	298,935	732,275	1,954,392
Workplace Pop	15,780	140,650	374,314	947,107
Average Household Income	\$76,928	\$79,359	\$74,833	\$78,194
Median Household Income	\$54,273	\$53,913	\$49,921	\$54,108
Total Housing Units	9,954	75,487	175,437	515,942
Median Home Value	\$589,348	\$571,895	\$490,237	\$483,010
Bachelors Degree	20.7%	19.4%	16.4%	15.6%
Graduate Degree	14.1%	12.8%	10.0%	8.9%

Projections (2026)

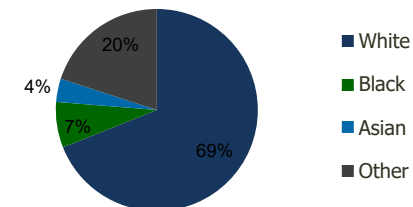
Projected Population	24,394	192,810	480,250	1,492,454
Projected 5 Year Pop Growth	1.4%	0.9%	0.7%	0.7%
Projected Households	10,687	79,610	183,935	537,670
Projected 5 Year Household Growth	1.4%	1.1%	1.0%	0.8%



Education (3-Mile)



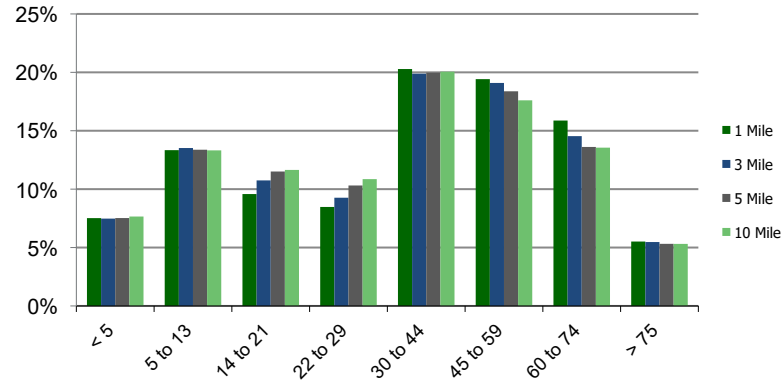
Daytime Population (3-Mile)



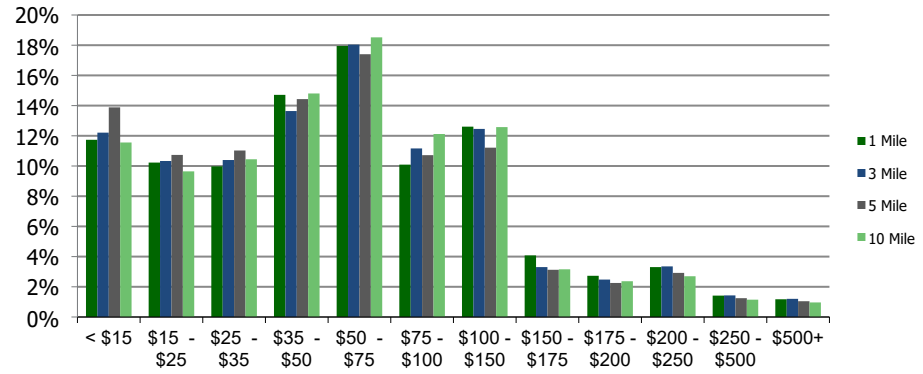
Ethnicity (3-Mile)

This report was produced using data from private and government sources deemed to be reliable and is herein provided without representation or warranty.

Population by Age Range



Household Income by Income Range (\$000)



	1.00 Mile Radius	3.00 Mile Radius	5.00 Mile Radius	10.00 Mile Radius
118290-Camelback Village Square				
Phoenix, AZ				

Population	Current Estimated Population	22,736	183,978	463,111	1,438,390
	2010 Census Population	18,078	162,661	420,149	1,294,746
	2000 Census Population	20,884	174,405	451,677	1,285,394
	Historical Annual Growth 2000 to 2010	-1.43%	-0.69%	-0.72%	0.07%
	Estimated Annual Growth 2010 to 2020	1.97%	1.05%	0.83%	0.90%
	Projected Annual Growth 2020 to 2025	1.42%	0.94%	0.73%	0.74%
Households	Current Estimated Households	9,954	75,487	175,437	515,942
	2010 Census Households	7,926	65,560	155,178	459,610
	2000 Census Households	9,053	70,047	165,312	454,953
	Historical Annual Growth 2000 to 2010	-1.3%	-0.7%	-0.6%	0.1%
	Estimated Annual Growth 2010 to 2020	2.0%	1.2%	1.0%	1.0%
	Projected Annual Growth 2020 to 2025	1.4%	1.1%	1.0%	0.8%
	Population per Household	2.3	2.4	2.6	2.7
Ethnicity	White	67.6%	69.0%	67.4%	68.3%
	Black or African American	10.0%	7.3%	6.8%	7.0%
	Asian & Pacific Islander	4.0%	3.7%	2.9%	2.7%
	Other Races	18.4%	20.0%	22.9%	22.1%
	Hispanic or Latino Population	31.8%	38.8%	47.8%	46.0%
	Non Hispanic or Latino Population	68.2%	61.2%	52.2%	54.0%

This report was produced using data from private and government sources deemed to be reliable and is herein provided without representation or warranty.