

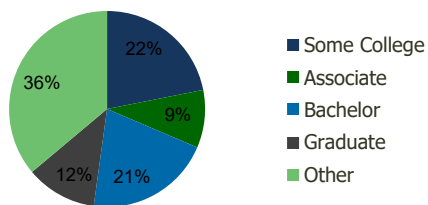
118010-Countryside Centre Clearwater, FL	1.00 Mile Radius	3.00 Mile Radius	5.00 Mile Radius	10.00 Mile Radius
---	---------------------	---------------------	---------------------	----------------------

Demographics (2021)

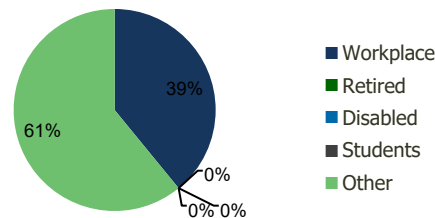
Current Population	12,236	104,622	230,145	554,825
Total Daytime Pop	15,676	104,463	227,751	577,926
Workplace Pop	8,610	40,823	88,923	247,639
Average Household Income	\$71,034	\$78,514	\$77,595	\$83,983
Median Household Income	\$50,293	\$56,015	\$55,704	\$58,749
Total Housing Units	6,467	49,219	104,257	245,319
Median Home Value	\$295,310	\$386,954	\$410,891	\$423,431
Bachelors Degree	22.1%	20.8%	21.3%	21.2%
Graduate Degree	12.5%	11.7%	10.5%	11.3%

Projections (2026)

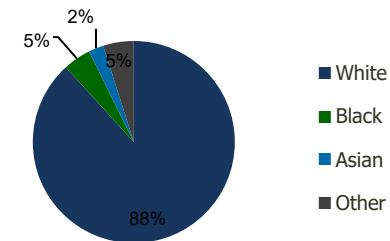
Projected Population	11,960	103,098	228,281	556,684
Projected 5 Year Pop Growth	-0.5%	-0.3%	-0.2%	0.1%
Projected Households	6,317	48,494	103,365	245,755
Projected 5 Year Household Growth	-0.5%	-0.3%	-0.2%	0.0%



Education (3-Mile)



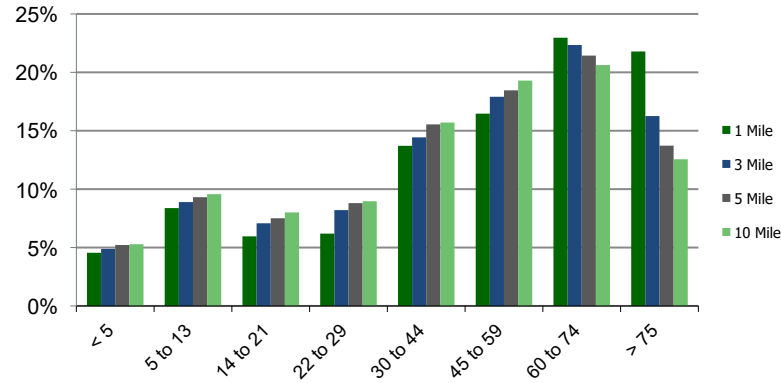
Daytime Population (3-Mile)



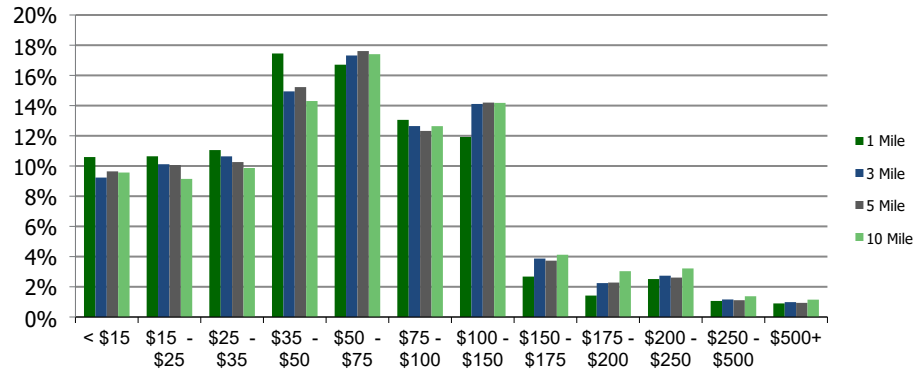
Ethnicity (3-Mile)

This report was produced using data from private and government sources deemed to be reliable and is herein provided without representation or warranty.

Population by Age Range



Household Income by Income Range (\$000)



118010-Countryside Centre Clearwater, FL	1.00 Mile Radius	3.00 Mile Radius	5.00 Mile Radius	10.00 Mile Radius
--	-------------------------	-------------------------	-------------------------	--------------------------

Population	Current Estimated Population	12,236	104,622	230,145	554,825
	2010 Census Population	12,268	101,938	222,281	522,973
	2000 Census Population	12,940	103,058	226,603	497,166
	Historical Annual Growth 2000 to 2010	-0.53%	-0.11%	-0.19%	0.51%
	Estimated Annual Growth 2010 to 2020	-0.02%	0.22%	0.30%	0.50%
	Projected Annual Growth 2020 to 2025	-0.46%	-0.29%	-0.16%	0.07%
Households	Current Estimated Households	6,467	49,219	104,257	245,319
	2010 Census Households	6,530	48,012	100,847	232,247
	2000 Census Households	6,786	47,562	100,834	219,579
	Historical Annual Growth 2000 to 2010	-0.4%	0.1%	0.0%	0.6%
	Estimated Annual Growth 2010 to 2020	-0.1%	0.2%	0.3%	0.5%
	Projected Annual Growth 2020 to 2025	-0.5%	-0.3%	-0.2%	0.0%
	Population per Household	1.9	2.1	2.2	2.2
Ethnicity	White	89.1%	88.3%	85.9%	84.7%
	Black or African American	2.6%	4.4%	6.4%	6.6%
	Asian & Pacific Islander	3.3%	2.4%	2.4%	3.4%
	Other Races	5.0%	4.9%	5.3%	5.3%
	Hispanic or Latino Population	8.9%	9.8%	11.1%	13.5%
	Non Hispanic or Latino Population	91.1%	90.2%	88.9%	86.5%

This report was produced using data from private and government sources deemed to be reliable and is herein provided without representation or warranty.