

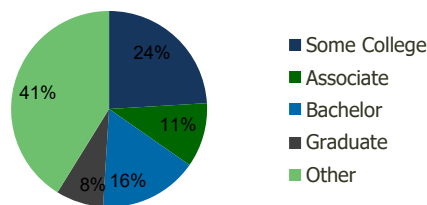
117940-Largo Plaza Largo, FL	1.00 Mile Radius	3.00 Mile Radius	5.00 Mile Radius	10.00 Mile Radius
---------------------------------	---------------------	---------------------	---------------------	----------------------

## Demographics (2021)

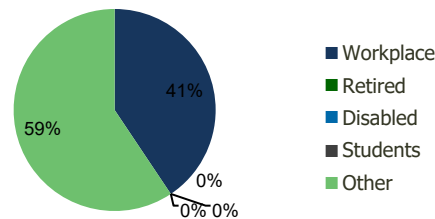
Current Population	14,470	114,291	261,711	619,205
Total Daytime Pop	12,755	105,131	305,090	709,035
Workplace Pop	4,172	42,696	118,227	320,358
Average Household Income	\$58,690	\$71,725	\$78,707	\$76,022
Median Household Income	\$40,383	\$52,132	\$56,304	\$54,994
Total Housing Units	7,434	52,631	118,274	282,274
Median Home Value	\$189,660	\$328,645	\$388,958	\$370,109
Bachelors Degree	14.0%	16.3%	18.5%	18.9%
Graduate Degree	6.0%	7.8%	9.2%	9.4%

## Projections (2026)

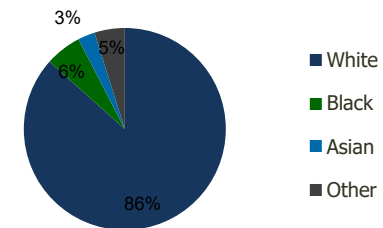
Projected Population	14,511	113,692	260,824	616,318
Projected 5 Year Pop Growth	0.1%	-0.1%	-0.1%	-0.1%
Projected Households	7,441	52,302	117,777	280,947
Projected 5 Year Household Growth	0.0%	-0.1%	-0.1%	-0.1%



Education (3-Mile)



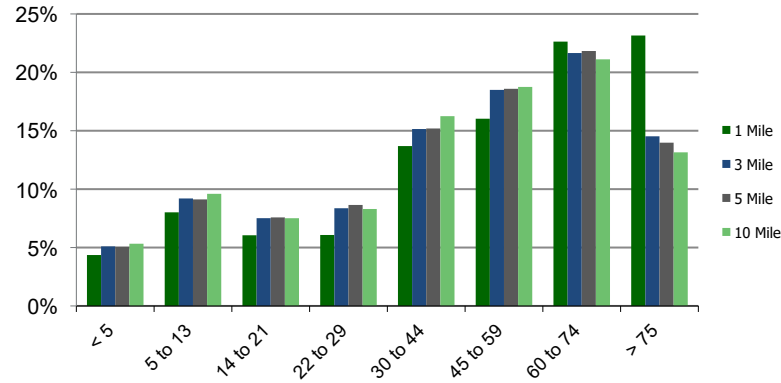
Daytime Population (3-Mile)



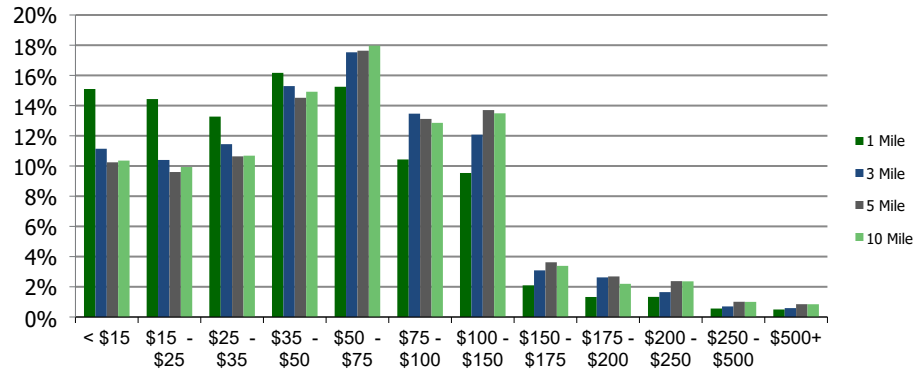
Ethnicity (3-Mile)

This report was produced using data from private and government sources deemed to be reliable and is herein provided without representation or warranty.

**Population by Age Range**



**Household Income by Income Range (\$000)**



117940-Largo Plaza Largo, FL	1.00 Mile Radius	3.00 Mile Radius	5.00 Mile Radius	10.00 Mile Radius
---------------------------------	---------------------	---------------------	---------------------	----------------------

<b>Population</b>	Current Estimated Population	14,470	114,291	261,711	619,205
	2010 Census Population	14,294	110,742	251,795	595,871
	2000 Census Population	14,317	109,004	250,535	594,989
	Historical Annual Growth 2000 to 2010	-0.02%	0.16%	0.05%	0.01%
	Estimated Annual Growth 2010 to 2020	0.10%	0.27%	0.33%	0.33%
	Projected Annual Growth 2020 to 2025	0.06%	-0.10%	-0.07%	-0.09%
<b>Households</b>	Current Estimated Households	7,434	52,631	118,274	282,274
	2010 Census Households	7,393	51,341	114,347	271,891
	2000 Census Households	7,447	49,895	112,099	272,174
	Historical Annual Growth 2000 to 2010	-0.1%	0.3%	0.2%	0.0%
	Estimated Annual Growth 2010 to 2020	0.0%	0.2%	0.3%	0.3%
	Projected Annual Growth 2020 to 2025	0.0%	-0.1%	-0.1%	-0.1%
	Population per Household	1.9	2.2	2.2	2.1
<b>Ethnicity</b>	White	89.0%	86.6%	86.1%	84.0%
	Black or African American	4.1%	5.8%	5.8%	7.0%
	Asian & Pacific Islander	2.7%	2.7%	3.2%	3.7%
	Other Races	4.2%	4.9%	4.9%	5.3%
	Hispanic or Latino Population	6.8%	8.4%	9.3%	10.1%
	Non Hispanic or Latino Population	93.2%	91.6%	90.7%	89.9%

This report was produced using data from private and government sources deemed to be reliable and is herein provided without representation or warranty.