

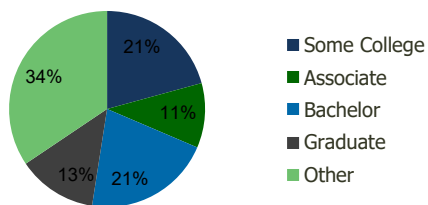
| Embassy Lakes Shopping Center<br>Cooper City, FL | 1.00 Mile<br>Radius | 3.00 Mile<br>Radius | 5.00 Mile<br>Radius | 10.00 Mile<br>Radius |
|--|---------------------|---------------------|---------------------|----------------------|
|--|---------------------|---------------------|---------------------|----------------------|

## Demographics (2020)

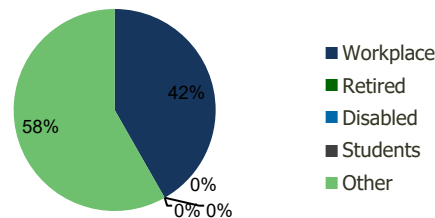
|                          |           |           |           |           |
|--------------------------|-----------|-----------|-----------|-----------|
| Current Population       | 18,326    | 135,596   | 349,613   | 1,324,349 |
| Total Daytime Pop        | 12,933    | 130,751   | 335,527   | 1,349,993 |
| Workplace Pop            | 4,267     | 54,585    | 130,848   | 544,217   |
| Average Household Income | \$112,403 | \$88,750  | \$92,964  | \$84,249  |
| Median Household Income  | \$94,244  | \$69,091  | \$70,675  | \$61,294  |
| Total Housing Units      | 6,658     | 52,426    | 125,872   | 469,243   |
| Median Home Value        | \$568,320 | \$463,493 | \$472,524 | \$432,849 |
| Bachelors Degree         | 27.2%     | 21.0%     | 20.3%     | 18.8%     |
| Graduate Degree          | 16.2%     | 13.1%     | 12.8%     | 11.2%     |

## Projections (2025)

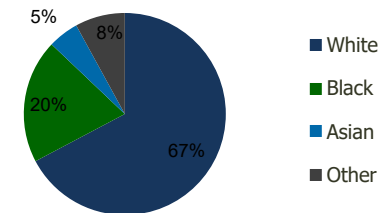
|                                   |        |         |         |           |
|-----------------------------------|--------|---------|---------|-----------|
| Projected Population              | 18,249 | 140,867 | 364,084 | 1,353,074 |
| Projected 5 Year Pop Growth       | -0.1%  | 0.8%    | 0.8%    | 0.4%      |
| Projected Households              | 6,627  | 54,422  | 131,186 | 479,490   |
| Projected 5 Year Household Growth | -0.1%  | 0.8%    | 0.8%    | 0.4%      |



Education (3-Mile)



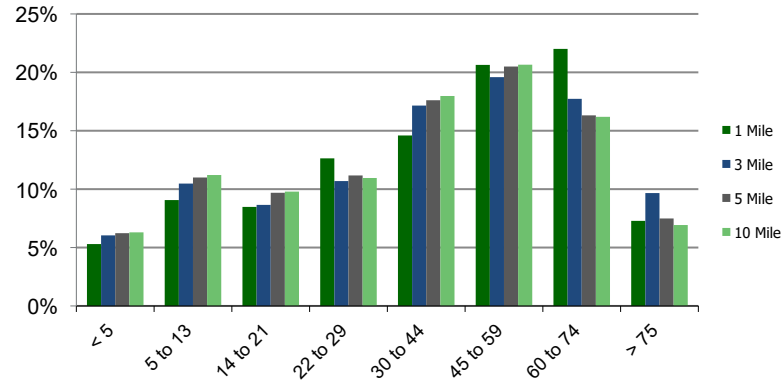
Daytime Population (3-Mile)



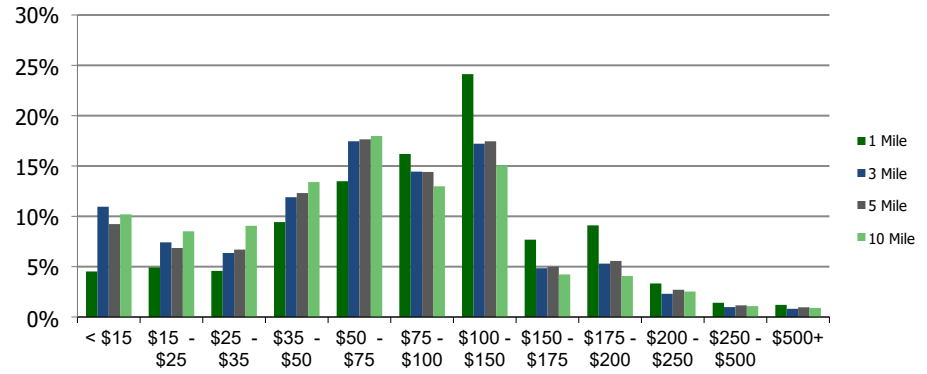
Ethnicity (3-Mile)

This report was produced using data from private and government sources deemed to be reliable and is herein provided without representation or warranty.

**Population by Age Range**



**Household Income by Income Range (\$000)**



**Embassy Lakes Shopping Center**

Cooper City, FL

1.00 Mile Radius

3.00 Mile Radius

5.00 Mile Radius

10.00 Mile Radius

|                                       | 1.00 Mile Radius | 3.00 Mile Radius | 5.00 Mile Radius | 10.00 Mile Radius |
|---------------------------------------|------------------|------------------|------------------|-------------------|
| <b>Population</b>                     |                  |                  |                  |                   |
| Current Estimated Population          | 18,326           | 135,596          | 349,613          | 1,324,349         |
| 2010 Census Population                | 17,211           | 116,791          | 301,361          | 1,211,243         |
| 2000 Census Population                | 17,917           | 108,220          | 254,183          | 1,084,489         |
| Historical Annual Growth 2000 to 2010 | -0.40%           | 0.77%            | 1.72%            | 1.11%             |
| Estimated Annual Growth 2010 to 2020  | 0.59%            | 1.40%            | 1.39%            | 0.83%             |
| Projected Annual Growth 2020 to 2025  | -0.08%           | 0.77%            | 0.81%            | 0.43%             |
| <b>Households</b>                     |                  |                  |                  |                   |
| Current Estimated Households          | 6,658            | 52,426           | 125,872          | 469,243           |
| 2010 Census Households                | 6,274            | 45,228           | 108,129          | 427,841           |
| 2000 Census Households                | 6,287            | 42,593           | 94,069           | 392,269           |
| Historical Annual Growth 2000 to 2010 | 0.0%             | 0.6%             | 1.4%             | 0.9%              |
| Estimated Annual Growth 2010 to 2020  | 0.6%             | 1.4%             | 1.4%             | 0.9%              |
| Projected Annual Growth 2020 to 2025  | -0.1%            | 0.8%             | 0.8%             | 0.4%              |
| Population per Household              | 2.8              | 2.6              | 2.8              | 2.8               |
| <b>Ethnicity</b>                      |                  |                  |                  |                   |
| White                                 | 79.8%            | 67.3%            | 61.9%            | 60.1%             |
| Black or African American             | 8.2%             | 19.8%            | 24.3%            | 29.4%             |
| Asian & Pacific Islander              | 5.7%             | 4.9%             | 5.1%             | 3.3%              |
| Other Races                           | 6.3%             | 8.0%             | 8.7%             | 7.2%              |
| Hispanic or Latino Population         | 33.5%            | 37.4%            | 37.9%            | 39.4%             |
| Non Hispanic or Latino Population     | 66.5%            | 62.6%            | 62.1%            | 60.6%             |

This report was produced using data from private and government sources deemed to be reliable and is herein provided without representation or warranty.