

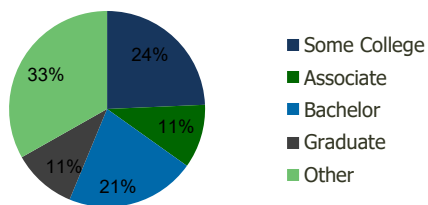
120560-Clermont Landing Clermont, FL	1.00 Mile Radius	3.00 Mile Radius	5.00 Mile Radius	10.00 Mile Radius
---	---------------------	---------------------	---------------------	----------------------

## Demographics (2021)

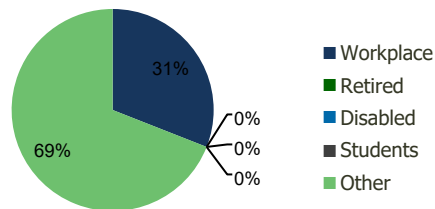
Current Population	6,946	59,393	95,111	226,593
Total Daytime Pop	10,932	55,138	77,314	166,875
Workplace Pop	3,162	17,072	20,918	41,025
Average Household Income	\$79,103	\$84,482	\$86,982	\$98,475
Median Household Income	\$63,783	\$68,669	\$72,337	\$77,762
Total Housing Units	2,582	21,811	34,440	80,736
Median Home Value	\$467,355	\$482,293	\$484,152	\$510,993
Bachelors Degree	20.6%	21.4%	20.4%	21.8%
Graduate Degree	9.8%	10.6%	10.2%	12.1%

## Projections (2026)

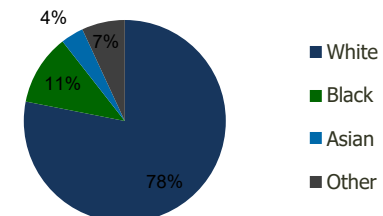
Projected Population	7,523	65,703	107,291	275,062
Projected 5 Year Pop Growth	1.6%	2.0%	2.4%	4.0%
Projected Households	2,797	24,119	38,807	98,068
Projected 5 Year Household Growth	1.6%	2.0%	2.4%	4.0%



Education (3-Mile)



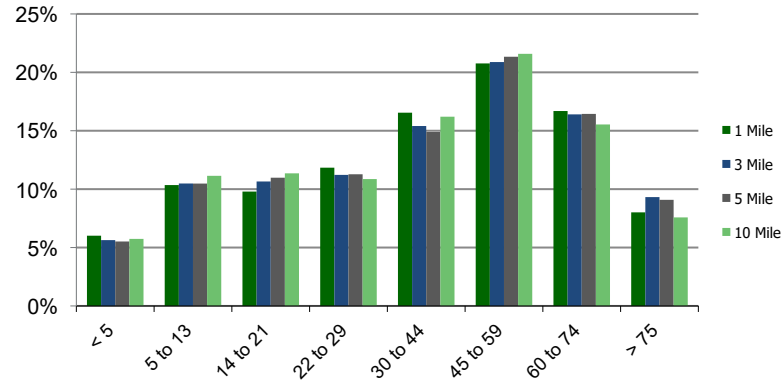
Daytime Population (3-Mile)



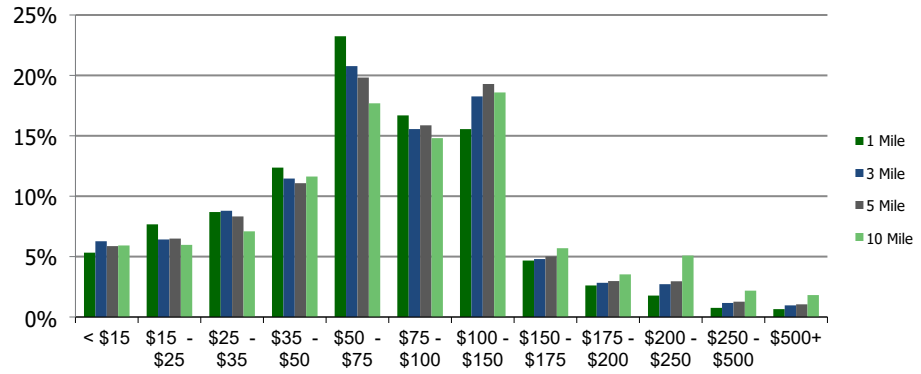
Ethnicity (3-Mile)

This report was produced using data from private and government sources deemed to be reliable and is herein provided without representation or warranty.

**Population by Age Range**



**Household Income by Income Range (\$000)**



<b>120560-Clermont Landing</b> Clermont, FL	<b>1.00 Mile Radius</b>	<b>3.00 Mile Radius</b>	<b>5.00 Mile Radius</b>	<b>10.00 Mile Radius</b>
--	-------------------------	-------------------------	-------------------------	--------------------------

<b>Population</b>	Current Estimated Population	6,946	59,393	95,111	226,593
	2010 Census Population	5,090	41,673	63,504	131,980
	2000 Census Population	2,199	19,304	30,149	62,410
	Historical Annual Growth 2000 to 2010	8.76%	8.00%	7.73%	7.78%
	Estimated Annual Growth 2010 to 2020	2.68%	3.06%	3.50%	4.71%
	Projected Annual Growth 2020 to 2025	1.61%	2.04%	2.44%	3.95%
<b>Households</b>	Current Estimated Households	2,582	21,811	34,440	80,736
	2010 Census Households	1,892	15,349	23,112	46,876
	2000 Census Households	848	7,288	11,232	22,887
	Historical Annual Growth 2000 to 2010	8.3%	7.7%	7.5%	7.4%
	Estimated Annual Growth 2010 to 2020	2.7%	3.0%	3.5%	4.7%
	Projected Annual Growth 2020 to 2025	1.6%	2.0%	2.4%	4.0%
	Population per Household	2.7	2.7	2.8	2.8
<b>Ethnicity</b>	White	79.0%	78.1%	78.6%	75.5%
	Black or African American	11.1%	11.3%	10.9%	11.5%
	Asian & Pacific Islander	4.1%	3.7%	3.7%	4.4%
	Other Races	5.7%	6.9%	6.9%	8.6%
	Hispanic or Latino Population	18.8%	19.6%	18.6%	20.8%
	Non Hispanic or Latino Population	81.2%	80.4%	81.4%	79.2%

This report was produced using data from private and government sources deemed to be reliable and is herein provided without representation or warranty.