

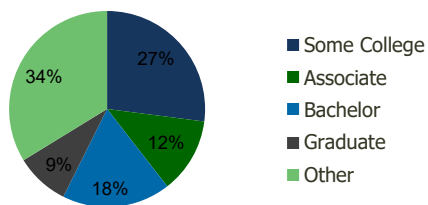
120370-Meridian Town Center Puyallup, WA	1.00 Mile Radius	3.00 Mile Radius	5.00 Mile Radius	10.00 Mile Radius
---	---------------------	---------------------	---------------------	----------------------

Demographics (2021)

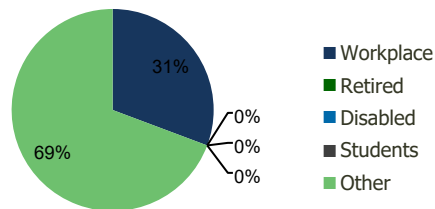
Current Population	14,187	87,651	184,754	565,065
Total Daytime Pop	12,021	74,222	154,075	490,202
Workplace Pop	4,632	22,792	48,131	169,435
Average Household Income	\$88,058	\$100,843	\$98,722	\$93,523
Median Household Income	\$73,593	\$83,979	\$82,734	\$76,526
Total Housing Units	5,451	31,740	66,940	204,242
Median Home Value	\$528,749	\$582,497	\$568,494	\$529,830
Bachelors Degree	17.1%	17.9%	17.0%	15.8%
Graduate Degree	6.2%	8.9%	8.3%	6.6%

Projections (2026)

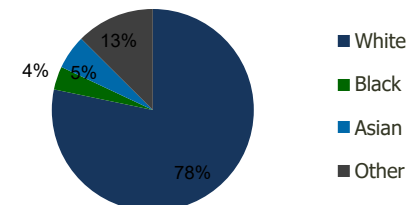
Projected Population	15,306	93,619	196,622	594,313
Projected 5 Year Pop Growth	1.5%	1.3%	1.3%	1.0%
Projected Households	5,884	33,888	71,141	214,615
Projected 5 Year Household Growth	1.5%	1.3%	1.2%	1.0%



Education (3-Mile)



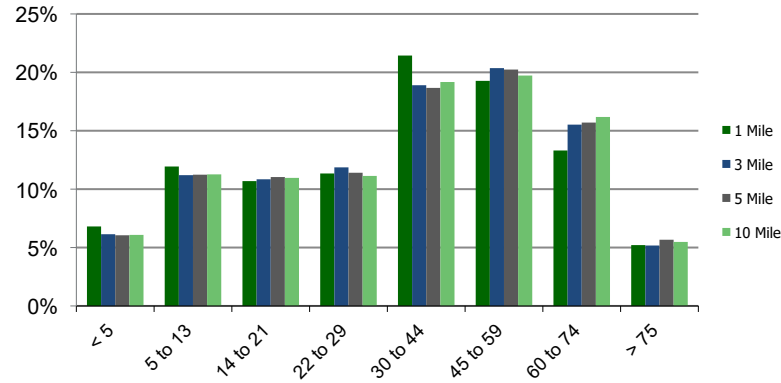
Daytime Population (3-Mile)



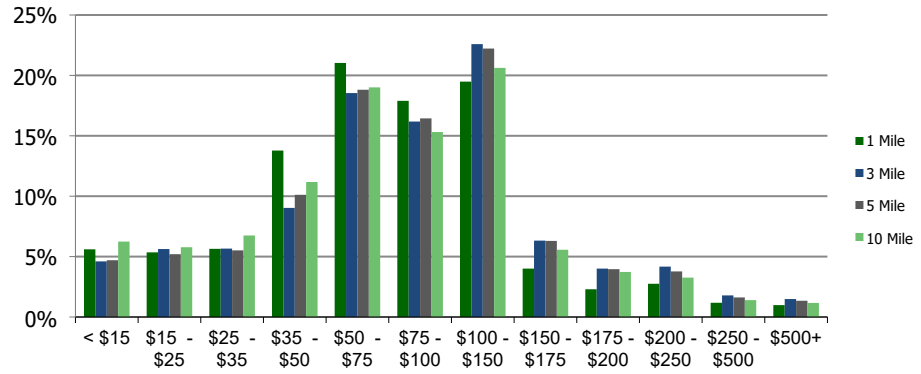
Ethnicity (3-Mile)

This report was produced using data from private and government sources deemed to be reliable and is herein provided without representation or warranty.

Population by Age Range



Household Income by Income Range (\$000)



120370-Meridian Town Center Puyallup, WA	1.00 Mile Radius	3.00 Mile Radius	5.00 Mile Radius	10.00 Mile Radius
--	------------------	------------------	------------------	-------------------

		1.00 Mile Radius	3.00 Mile Radius	5.00 Mile Radius	10.00 Mile Radius
Population	Current Estimated Population	14,187	87,651	184,754	565,065
	2010 Census Population	11,101	71,454	151,594	475,728
	2000 Census Population	8,702	56,043	115,035	394,224
	Historical Annual Growth 2000 to 2010	2.46%	2.46%	2.80%	1.90%
	Estimated Annual Growth 2010 to 2020	2.11%	1.75%	1.70%	1.48%
	Projected Annual Growth 2020 to 2025	1.53%	1.33%	1.25%	1.01%
Households	Current Estimated Households	5,451	31,740	66,940	204,242
	2010 Census Households	4,252	25,895	55,101	172,178
	2000 Census Households	3,241	19,908	41,935	142,687
	Historical Annual Growth 2000 to 2010	2.8%	2.7%	2.8%	1.9%
	Estimated Annual Growth 2010 to 2020	2.1%	1.7%	1.7%	1.5%
	Projected Annual Growth 2020 to 2025	1.5%	1.3%	1.2%	1.0%
	Population per Household	2.6	2.8	2.7	2.7
Ethnicity	White	75.8%	78.3%	79.0%	72.6%
	Black or African American	4.0%	3.7%	3.7%	5.9%
	Asian & Pacific Islander	6.5%	5.5%	5.3%	6.6%
	Other Races	13.7%	12.5%	12.0%	14.9%
	Hispanic or Latino Population	9.9%	9.5%	9.1%	11.2%
	Non Hispanic or Latino Population	90.1%	90.5%	90.9%	88.8%

This report was produced using data from private and government sources deemed to be reliable and is herein provided without representation or warranty.