

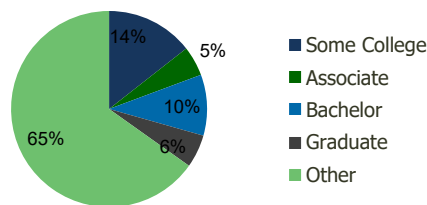
120300-Harrisburg Plaza Houston, TX	1.00 Mile Radius	3.00 Mile Radius	5.00 Mile Radius	10.00 Mile Radius
--	---------------------	---------------------	---------------------	----------------------

Demographics (2021)

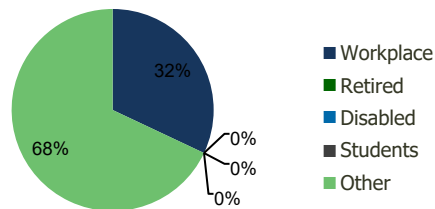
Current Population	19,743	122,262	341,730	1,254,878
Total Daytime Pop	17,650	178,606	612,353	1,699,296
Workplace Pop	6,417	57,164	251,769	808,579
Average Household Income	\$50,696	\$59,111	\$70,638	\$100,455
Median Household Income	\$35,155	\$41,383	\$47,506	\$60,588
Total Housing Units	6,000	37,984	114,407	463,193
Median Home Value	\$121,231	\$131,045	\$139,886	\$178,827
Bachelors Degree	7.7%	10.1%	13.3%	17.1%
Graduate Degree	2.8%	5.4%	8.4%	13.3%

Projections (2026)

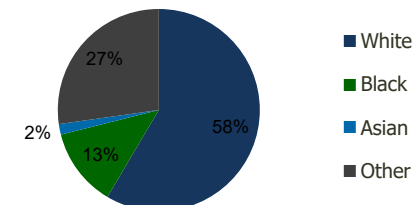
Projected Population	19,445	122,050	342,597	1,282,330
Projected 5 Year Pop Growth	-0.3%	0.0%	0.1%	0.4%
Projected Households	5,907	38,101	116,392	478,775
Projected 5 Year Household Growth	-0.3%	0.1%	0.3%	0.7%



Education (3-Mile)



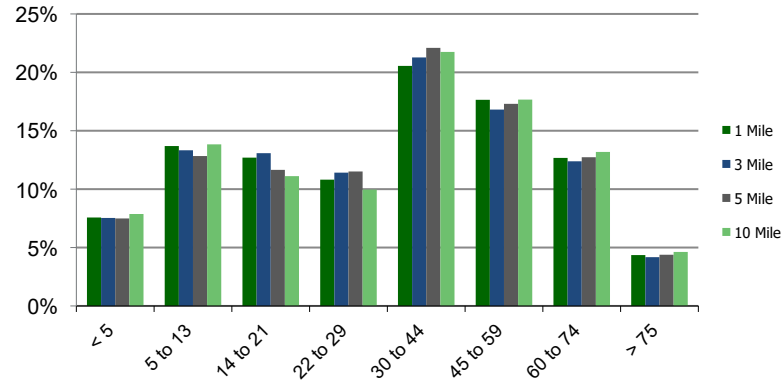
Daytime Population (3-Mile)



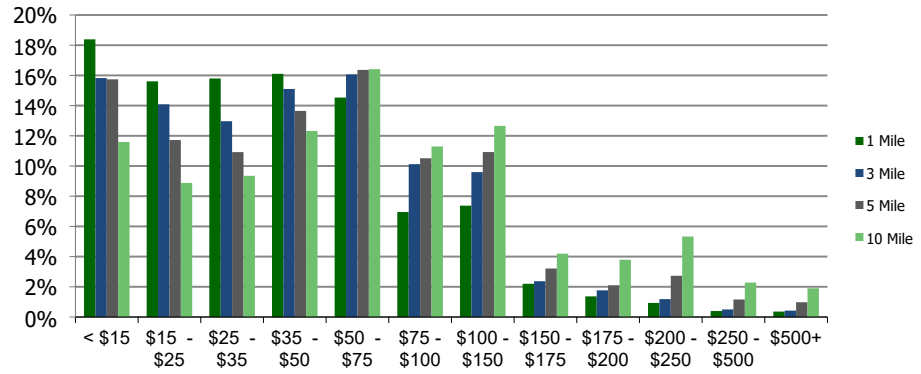
Ethnicity (3-Mile)

This report was produced using data from private and government sources deemed to be reliable and is herein provided without representation or warranty.

Population by Age Range



Household Income by Income Range (\$000)



	1.00 Mile Radius	3.00 Mile Radius	5.00 Mile Radius	10.00 Mile Radius
--	------------------	------------------	------------------	-------------------

120300-Harrisburg Plaza Houston, TX					
	1.00 Mile Radius	3.00 Mile Radius	5.00 Mile Radius	10.00 Mile Radius	
Population	Current Estimated Population	19,743	122,262	341,730	1,254,878
	2010 Census Population	19,154	117,105	324,957	1,145,778
	2000 Census Population	22,748	128,782	334,963	1,090,471
	Historical Annual Growth 2000 to 2010	-1.70%	-0.95%	-0.30%	0.50%
	Estimated Annual Growth 2010 to 2020	0.26%	0.37%	0.43%	0.78%
	Projected Annual Growth 2020 to 2025	-0.30%	-0.03%	0.05%	0.43%
Households	Current Estimated Households	6,000	37,984	114,407	463,193
	2010 Census Households	5,822	36,101	105,357	412,043
	2000 Census Households	6,262	36,605	101,730	381,805
	Historical Annual Growth 2000 to 2010	-0.7%	-0.1%	0.4%	0.8%
	Estimated Annual Growth 2010 to 2020	0.3%	0.4%	0.7%	1.0%
	Projected Annual Growth 2020 to 2025	-0.3%	0.1%	0.3%	0.7%
	Population per Household	3.3	3.1	2.8	2.6
Ethnicity	White	66.5%	58.5%	52.0%	59.2%
	Black or African American	2.1%	12.6%	25.2%	21.4%
	Asian & Pacific Islander	0.6%	1.7%	2.5%	4.3%
	Other Races	30.7%	27.2%	20.3%	15.0%
	Hispanic or Latino Population	92.8%	77.8%	59.0%	49.6%
	Non Hispanic or Latino Population	7.2%	22.2%	41.0%	50.4%

This report was produced using data from private and government sources deemed to be reliable and is herein provided without representation or warranty.