

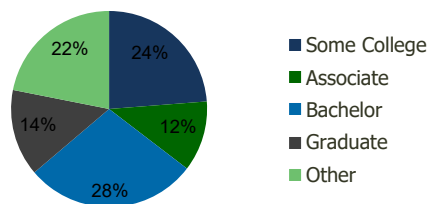
119960-Southampton Center Benicia, CA	1.00 Mile Radius	3.00 Mile Radius	5.00 Mile Radius	10.00 Mile Radius
--	---------------------	---------------------	---------------------	----------------------

## Demographics (2021)

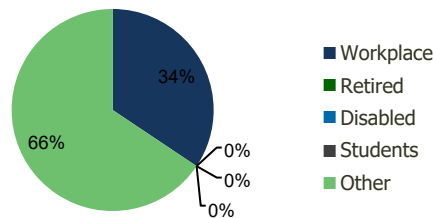
Current Population	12,060	43,738	106,672	381,225
Total Daytime Pop	8,700	34,652	84,660	368,020
Workplace Pop	1,804	11,913	28,197	133,465
Average Household Income	\$123,244	\$125,690	\$105,846	\$113,954
Median Household Income	\$97,409	\$102,752	\$85,132	\$90,482
Total Housing Units	4,932	16,762	39,683	137,797
Median Home Value	\$1,231,942	\$1,253,736	\$915,453	\$883,394
Bachelors Degree	28.7%	28.4%	22.8%	23.7%
Graduate Degree	16.7%	14.3%	10.1%	10.7%

## Projections (2026)

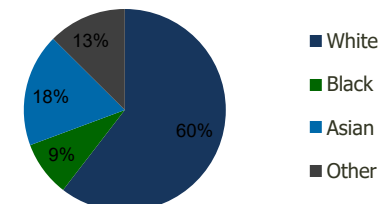
Projected Population	12,173	44,600	108,208	388,063
Projected 5 Year Pop Growth	0.2%	0.4%	0.3%	0.4%
Projected Households	4,980	17,077	40,246	140,182
Projected 5 Year Household Growth	0.2%	0.4%	0.3%	0.3%



Education (3-Mile)



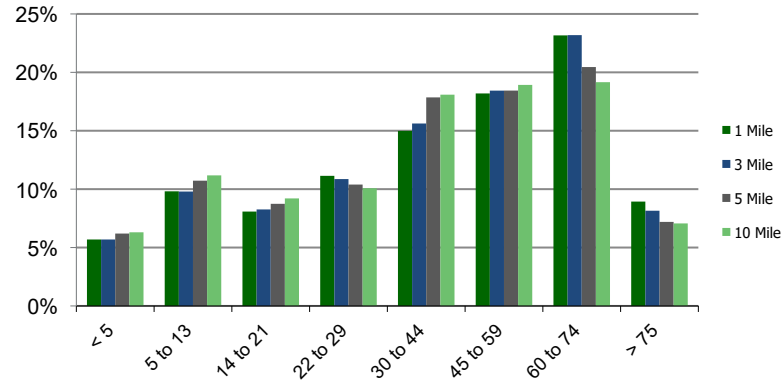
Daytime Population (3-Mile)



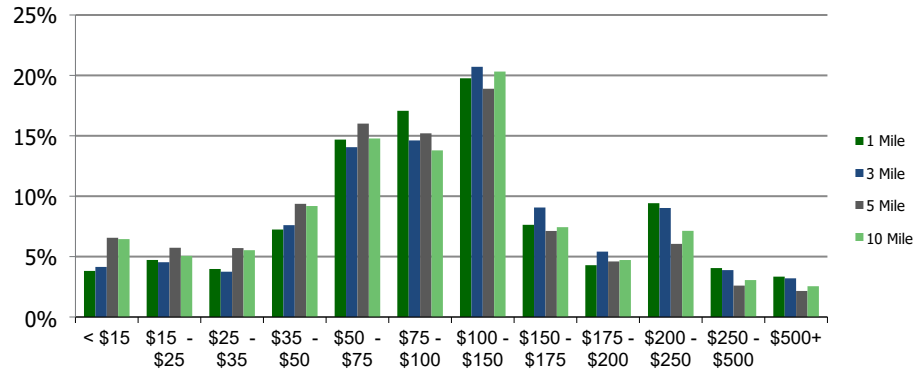
Ethnicity (3-Mile)

This report was produced using data from private and government sources deemed to be reliable and is herein provided without representation or warranty.

**Population by Age Range**



**Household Income by Income Range (\$000)**



<b>119960-Southampton Center</b> Benicia, CA	<b>1.00 Mile Radius</b>	<b>3.00 Mile Radius</b>	<b>5.00 Mile Radius</b>	<b>10.00 Mile Radius</b>
---	-------------------------	-------------------------	-------------------------	--------------------------

<b>Population</b>	Current Estimated Population	12,060	43,738	106,672	381,225
	2010 Census Population	11,943	41,444	102,811	362,898
	2000 Census Population	12,517	42,656	105,084	347,683
	Historical Annual Growth 2000 to 2010	-0.47%	-0.29%	-0.22%	0.43%
	Estimated Annual Growth 2010 to 2020	0.08%	0.46%	0.31%	0.42%
	Projected Annual Growth 2020 to 2025	0.19%	0.39%	0.29%	0.36%
<b>Households</b>	Current Estimated Households	4,932	16,762	39,683	137,797
	2010 Census Households	4,865	15,946	38,250	131,127
	2000 Census Households	4,929	15,727	38,018	125,129
	Historical Annual Growth 2000 to 2010	-0.1%	0.1%	0.1%	0.5%
	Estimated Annual Growth 2010 to 2020	0.1%	0.4%	0.3%	0.4%
	Projected Annual Growth 2020 to 2025	0.2%	0.4%	0.3%	0.3%
	Population per Household	2.4	2.6	2.7	2.7
<b>Ethnicity</b>	White	74.3%	60.5%	51.3%	49.5%
	Black or African American	4.9%	8.9%	13.4%	12.1%
	Asian & Pacific Islander	10.1%	18.1%	18.4%	20.8%
	Other Races	10.6%	12.6%	16.9%	17.7%
	Hispanic or Latino Population	11.5%	13.3%	19.8%	22.9%
	Non Hispanic or Latino Population	88.5%	86.7%	80.2%	77.1%

This report was produced using data from private and government sources deemed to be reliable and is herein provided without representation or warranty.