

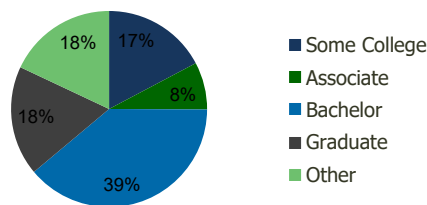
Falls Pointe Shopping Center Raleigh, NC	1.00 Mile Radius	3.00 Mile Radius	5.00 Mile Radius	10.00 Mile Radius
---	---------------------	---------------------	---------------------	----------------------

## Demographics (2020)

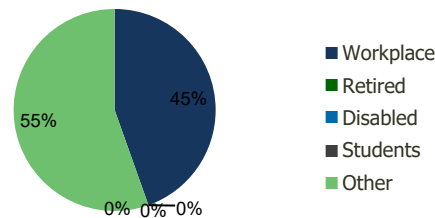
Current Population	8,344	55,952	170,569	505,870
Total Daytime Pop	7,431	58,944	180,811	607,399
Workplace Pop	2,628	26,267	88,520	308,786
Average Household Income	\$126,099	\$122,630	\$106,230	\$107,948
Median Household Income	\$106,633	\$88,989	\$76,626	\$79,289
Total Housing Units	3,262	21,854	67,999	198,770
Median Home Value	\$395,054	\$374,555	\$349,923	\$352,006
Bachelors Degree	40.5%	38.8%	34.8%	34.0%
Graduate Degree	20.1%	18.1%	17.7%	19.1%

## Projections (2025)

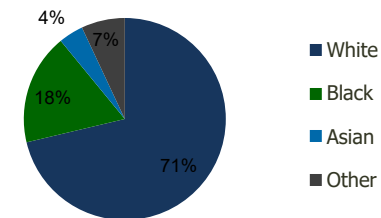
Projected Population	8,417	57,782	179,554	537,853
Projected 5 Year Pop Growth	0.2%	0.6%	1.0%	1.2%
Projected Households	3,290	22,546	71,335	210,956
Projected 5 Year Household Growth	0.2%	0.6%	1.0%	1.2%



Education (3-Mile)



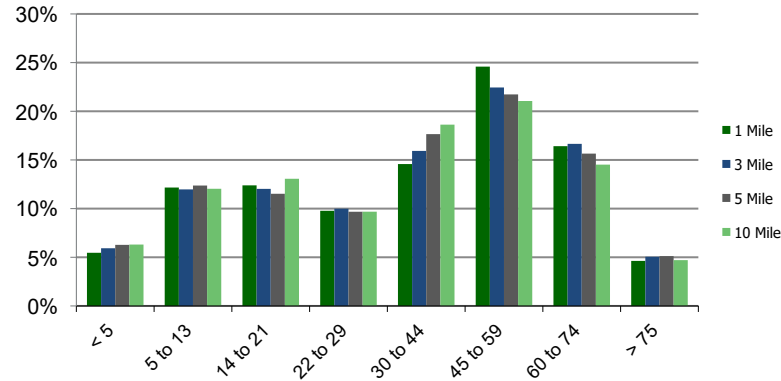
Daytime Population (3-Mile)



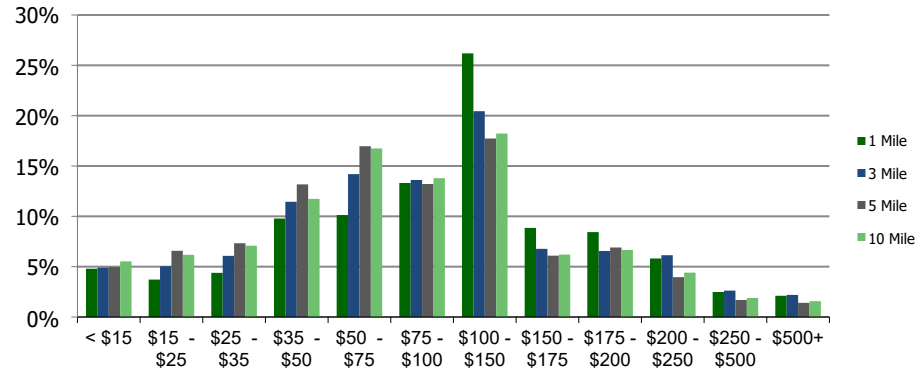
Ethnicity (3-Mile)

This report was produced using data from private and government sources deemed to be reliable and is herein provided without representation or warranty.

**Population by Age Range**



**Household Income by Income Range (\$000)**



<b>Falls Pointe Shopping Center</b> Raleigh, NC	1.00 Mile Radius	3.00 Mile Radius	5.00 Mile Radius	10.00 Mile Radius
--	---------------------	---------------------	---------------------	----------------------

		1.00 Mile Radius	3.00 Mile Radius	5.00 Mile Radius	10.00 Mile Radius
<b>Population</b>	Current Estimated Population	8,344	55,952	170,569	505,870
	2010 Census Population	7,731	49,768	145,316	422,917
	2000 Census Population	5,315	33,742	104,158	308,261
	Historical Annual Growth 2000 to 2010	3.82%	3.96%	3.39%	3.21%
	Estimated Annual Growth 2010 to 2020	0.71%	1.10%	1.50%	1.68%
	Projected Annual Growth 2020 to 2025	0.17%	0.65%	1.03%	1.23%
<b>Households</b>	Current Estimated Households	3,262	21,854	67,999	198,770
	2010 Census Households	3,015	19,431	58,259	165,932
	2000 Census Households	1,886	12,516	41,873	123,227
	Historical Annual Growth 2000 to 2010	4.8%	4.5%	3.4%	3.0%
	Estimated Annual Growth 2010 to 2020	0.7%	1.1%	1.4%	1.7%
	Projected Annual Growth 2020 to 2025	0.2%	0.6%	1.0%	1.2%
	Population per Household	2.6	2.5	2.5	2.5
<b>Ethnicity</b>	White	82.8%	71.3%	65.3%	66.7%
	Black or African American	9.6%	17.8%	22.2%	22.2%
	Asian & Pacific Islander	3.4%	4.0%	3.8%	3.5%
	Other Races	4.2%	7.0%	8.6%	7.6%
	Hispanic or Latino Population	4.1%	8.1%	10.7%	9.6%
	Non Hispanic or Latino Population	95.9%	91.9%	89.3%	90.4%

This report was produced using data from private and government sources deemed to be reliable and is herein provided without representation or warranty.