

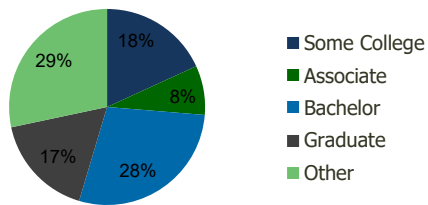
118370-Boca Lyons Plaza Boca Raton, FL	1.00 Mile Radius	3.00 Mile Radius	5.00 Mile Radius	10.00 Mile Radius
---	---------------------	---------------------	---------------------	----------------------

Demographics (2021)

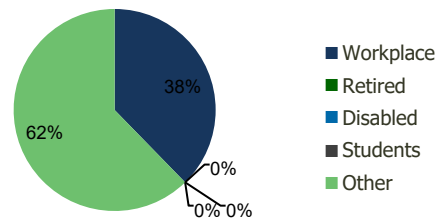
Current Population	10,361	104,325	223,952	789,395
Total Daytime Pop	13,458	98,819	227,385	883,645
Workplace Pop	6,589	37,259	84,484	363,130
Average Household Income	\$96,023	\$105,844	\$118,549	\$102,687
Median Household Income	\$70,631	\$71,237	\$78,091	\$67,240
Total Housing Units	4,629	44,627	94,297	331,342
Median Home Value	\$451,827	\$508,979	\$591,078	\$517,635
Bachelors Degree	29.1%	28.3%	28.7%	24.4%
Graduate Degree	17.6%	17.1%	18.8%	15.2%

Projections (2026)

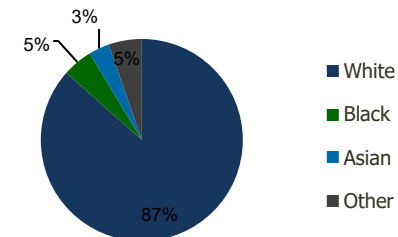
Projected Population	10,788	106,594	230,041	817,885
Projected 5 Year Pop Growth	0.8%	0.4%	0.5%	0.7%
Projected Households	4,825	45,604	96,784	342,300
Projected 5 Year Household Growth	0.8%	0.4%	0.5%	0.7%



Education (3-Mile)



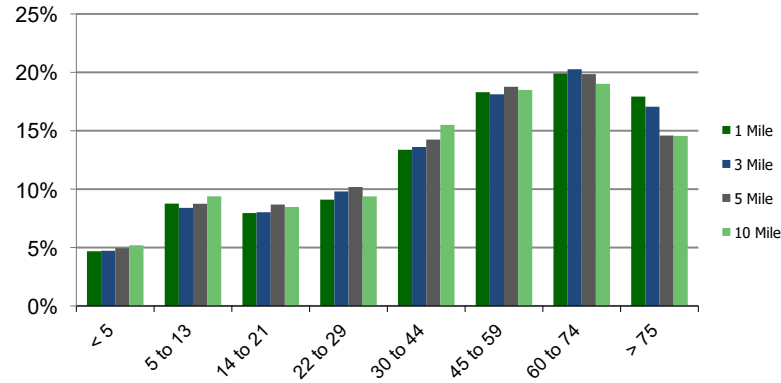
Daytime Population (3-Mile)



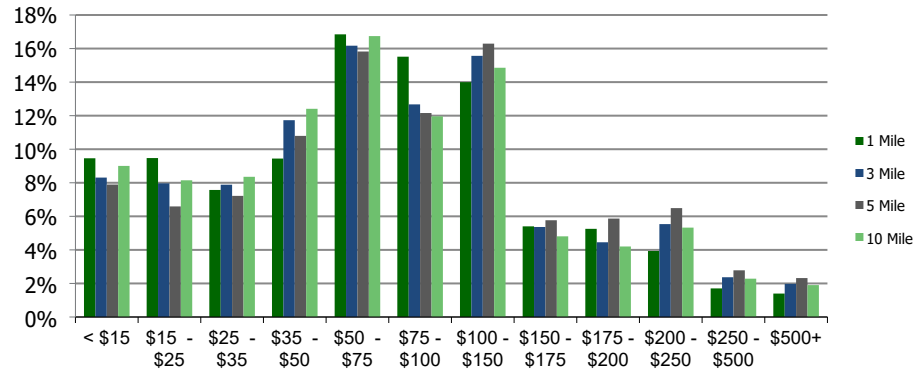
Ethnicity (3-Mile)

This report was produced using data from private and government sources deemed to be reliable and is herein provided without representation or warranty.

Population by Age Range



Household Income by Income Range (\$000)



118370-Boca Lyons Plaza Boca Raton, FL	1.00 Mile Radius	3.00 Mile Radius	5.00 Mile Radius	10.00 Mile Radius
---	------------------	------------------	------------------	-------------------

Population	Current Estimated Population	10,361	104,325	223,952	789,395
	2010 Census Population	9,073	97,005	203,405	700,582
	2000 Census Population	8,191	95,098	195,970	663,954
	Historical Annual Growth 2000 to 2010	1.03%	0.20%	0.37%	0.54%
	Estimated Annual Growth 2010 to 2020	1.14%	0.62%	0.82%	1.02%
	Projected Annual Growth 2020 to 2025	0.81%	0.43%	0.54%	0.71%
Households	Current Estimated Households	4,629	44,627	94,297	331,342
	2010 Census Households	4,026	41,469	85,686	296,166
	2000 Census Households	3,826	41,122	83,720	284,047
	Historical Annual Growth 2000 to 2010	0.5%	0.1%	0.2%	0.4%
	Estimated Annual Growth 2010 to 2020	1.2%	0.6%	0.8%	1.0%
	Projected Annual Growth 2020 to 2025	0.8%	0.4%	0.5%	0.7%
	Population per Household	2.2	2.3	2.3	2.3
Ethnicity	White	89.1%	86.6%	85.8%	74.7%
	Black or African American	2.9%	4.8%	5.6%	16.6%
	Asian & Pacific Islander	3.7%	3.3%	3.5%	3.1%
	Other Races	4.4%	5.3%	5.1%	5.7%
	Hispanic or Latino Population	15.6%	16.7%	16.6%	17.5%
	Non Hispanic or Latino Population	84.4%	83.3%	83.4%	82.5%

This report was produced using data from private and government sources deemed to be reliable and is herein provided without representation or warranty.