

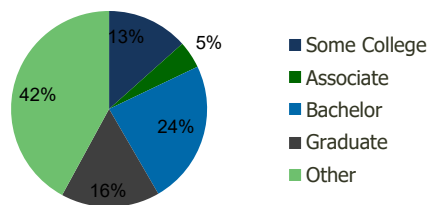
118180-Shops at Hilshire Village Houston, TX	1.00 Mile Radius	3.00 Mile Radius	5.00 Mile Radius	10.00 Mile Radius
---	---------------------	---------------------	---------------------	----------------------

Demographics (2021)

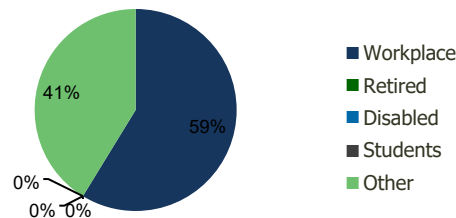
Current Population	21,634	135,116	406,682	1,601,466
Total Daytime Pop	17,506	170,984	539,634	2,208,815
Workplace Pop	8,419	100,441	336,201	1,182,749
Average Household Income	\$133,268	\$137,136	\$132,595	\$109,680
Median Household Income	\$65,001	\$69,269	\$78,520	\$64,868
Total Housing Units	7,408	50,664	173,547	629,778
Median Home Value	\$534,611	\$360,653	\$414,218	\$292,966
Bachelors Degree	22.2%	23.7%	29.1%	23.2%
Graduate Degree	14.1%	16.3%	19.5%	16.6%

Projections (2026)

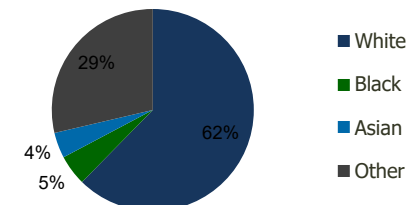
Projected Population	22,137	138,959	423,895	1,634,420
Projected 5 Year Pop Growth	0.5%	0.6%	0.8%	0.4%
Projected Households	7,580	52,187	181,697	647,536
Projected 5 Year Household Growth	0.5%	0.6%	0.9%	0.6%



Education (3-Mile)



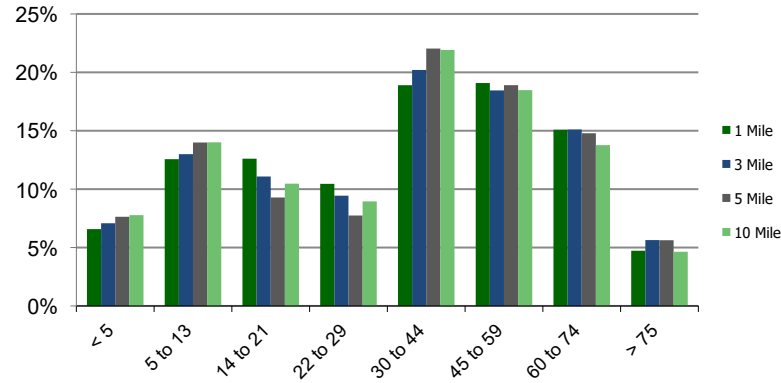
Daytime Population (3-Mile)



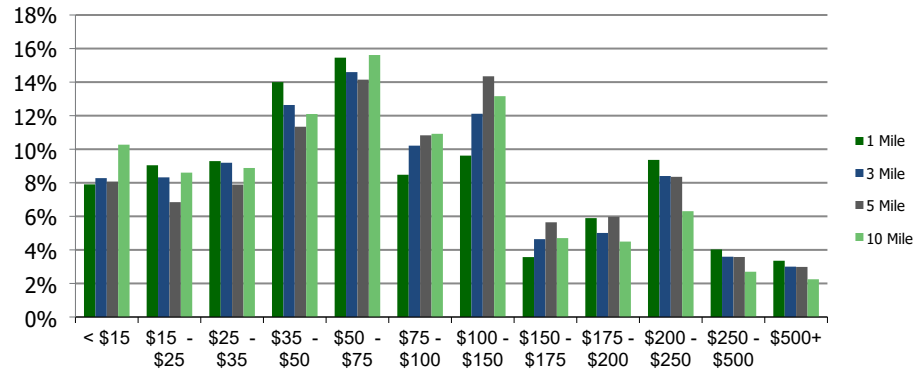
Ethnicity (3-Mile)

This report was produced using data from private and government sources deemed to be reliable and is herein provided without representation or warranty.

Population by Age Range



Household Income by Income Range (\$000)



118180-Shops at Hilshire Village

Houston, TX

1.00 Mile Radius

3.00 Mile Radius

5.00 Mile Radius

10.00 Mile Radius

	1.00 Mile Radius	3.00 Mile Radius	5.00 Mile Radius	10.00 Mile Radius
Population				
Current Estimated Population	21,634	135,116	406,682	1,601,466
2010 Census Population	19,879	122,819	355,161	1,462,997
2000 Census Population	19,973	123,431	339,942	1,372,786
Historical Annual Growth 2000 to 2010	-0.05%	-0.05%	0.44%	0.64%
Estimated Annual Growth 2010 to 2020	0.72%	0.82%	1.16%	0.77%
Projected Annual Growth 2020 to 2025	0.46%	0.56%	0.83%	0.41%
Households				
Current Estimated Households	7,408	50,664	173,547	629,778
2010 Census Households	6,786	45,639	149,306	565,276
2000 Census Households	6,605	45,081	140,635	529,874
Historical Annual Growth 2000 to 2010	0.3%	0.1%	0.6%	0.6%
Estimated Annual Growth 2010 to 2020	0.7%	0.9%	1.3%	0.9%
Projected Annual Growth 2020 to 2025	0.5%	0.6%	0.9%	0.6%
Population per Household	2.9	2.6	2.3	2.5
Ethnicity				
White	60.3%	62.4%	66.0%	58.9%
Black or African American	4.7%	4.9%	8.9%	16.7%
Asian & Pacific Islander	3.5%	4.1%	6.5%	8.3%
Other Races	31.6%	28.7%	18.6%	16.1%
Hispanic or Latino Population	53.5%	50.6%	39.4%	41.5%
Non Hispanic or Latino Population	46.5%	49.4%	60.6%	58.5%

This report was produced using data from private and government sources deemed to be reliable and is herein provided without representation or warranty.