

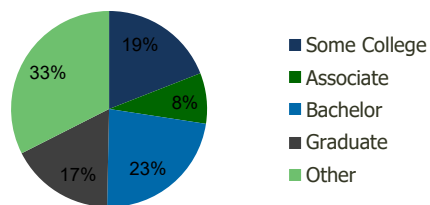
Sea Ranch Centre Sea Ranch Lakes, FL	1.00 Mile Radius	3.00 Mile Radius	5.00 Mile Radius	10.00 Mile Radius
---	---------------------	---------------------	---------------------	----------------------

Demographics (2020)

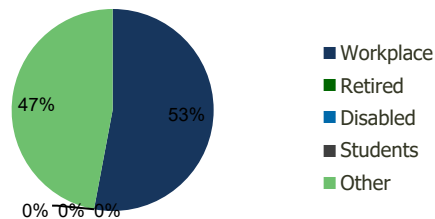
Current Population	11,416	88,394	206,803	851,807
Total Daytime Pop	16,147	103,902	284,206	1,004,306
Workplace Pop	9,613	55,021	148,468	450,947
Average Household Income	\$127,117	\$104,949	\$93,117	\$81,316
Median Household Income	\$77,310	\$66,072	\$60,573	\$55,575
Total Housing Units	6,734	45,236	97,786	357,581
Median Home Value	\$654,296	\$597,202	\$486,735	\$377,512
Bachelors Degree	29.1%	22.9%	21.3%	18.8%
Graduate Degree	23.2%	17.2%	13.6%	10.6%

Projections (2025)

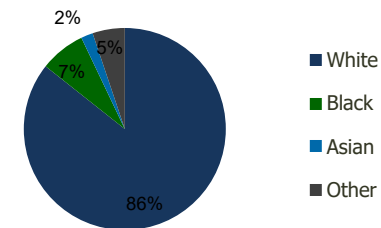
Projected Population	11,423	88,781	208,464	866,122
Projected 5 Year Pop Growth	0.0%	0.1%	0.2%	0.3%
Projected Households	6,751	45,391	98,434	363,973
Projected 5 Year Household Growth	0.1%	0.1%	0.1%	0.4%



Education (3-Mile)



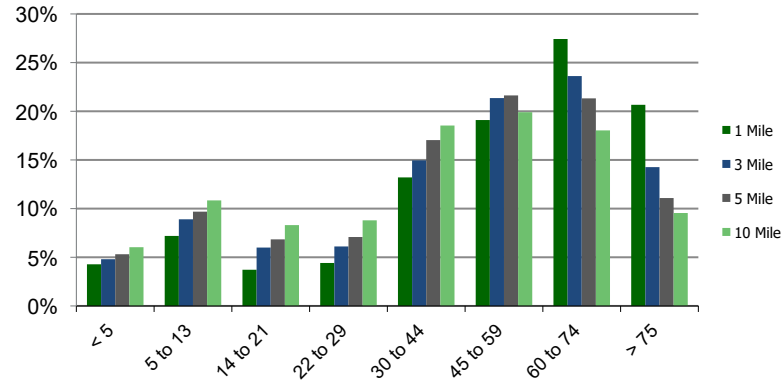
Daytime Population (3-Mile)



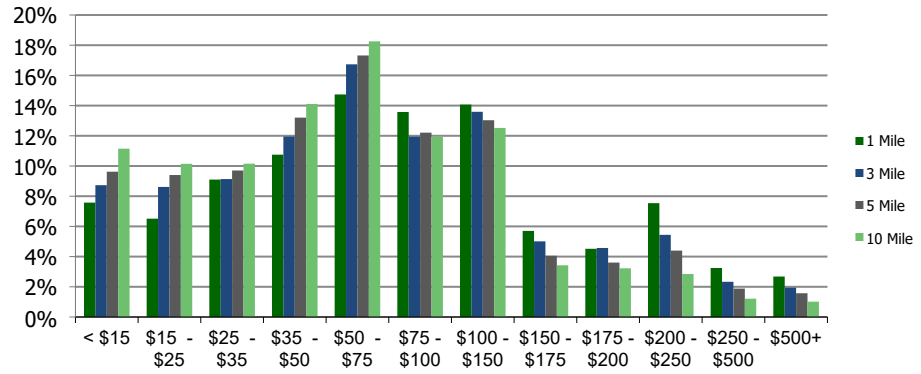
Ethnicity (3-Mile)

This report was produced using data from private and government sources deemed to be reliable and is herein provided without representation or warranty.

Population by Age Range



Household Income by Income Range (\$000)



Sea Ranch Centre Sea Ranch Lakes, FL	1.00 Mile Radius	3.00 Mile Radius	5.00 Mile Radius	10.00 Mile Radius
--	-------------------------	-------------------------	-------------------------	--------------------------

Population	Current Estimated Population	11,416	88,394	206,803	851,807
	2010 Census Population	10,583	82,629	190,793	772,440
	2000 Census Population	10,579	85,191	198,132	766,225
	Historical Annual Growth 2000 to 2010	0.00%	-0.30%	-0.38%	0.08%
	Estimated Annual Growth 2010 to 2020	0.71%	0.63%	0.75%	0.91%
	Projected Annual Growth 2020 to 2025	0.01%	0.09%	0.16%	0.33%
Households	Current Estimated Households	6,734	45,236	97,786	357,581
	2010 Census Households	6,187	42,297	90,416	323,351
	2000 Census Households	6,135	43,196	91,937	325,044
	Historical Annual Growth 2000 to 2010	0.1%	-0.2%	-0.2%	-0.1%
	Estimated Annual Growth 2010 to 2020	0.8%	0.6%	0.7%	0.9%
	Projected Annual Growth 2020 to 2025	0.1%	0.1%	0.1%	0.4%
	Population per Household	1.7	1.9	2.1	2.4
Ethnicity	White	92.5%	85.7%	71.8%	56.3%
	Black or African American	2.0%	7.3%	20.6%	35.6%
	Asian & Pacific Islander	2.4%	1.9%	1.8%	2.1%
	Other Races	3.0%	5.2%	5.8%	6.0%
	Hispanic or Latino Population	12.0%	17.8%	18.4%	18.3%
	Non Hispanic or Latino Population	88.0%	82.2%	81.6%	81.7%

This report was produced using data from private and government sources deemed to be reliable and is herein provided without representation or warranty.