

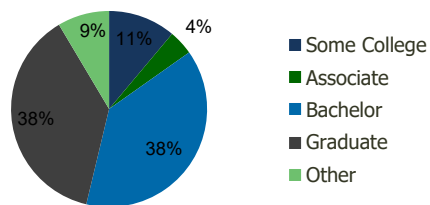
117990-Alabama Shepherd S.C. Houston, TX	1.00 Mile Radius	3.00 Mile Radius	5.00 Mile Radius	10.00 Mile Radius
---	---------------------	---------------------	---------------------	----------------------

Demographics (2021)

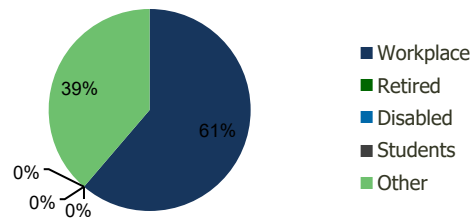
Current Population	27,554	196,659	503,411	1,583,200
Total Daytime Pop	39,635	465,258	961,930	2,111,358
Workplace Pop	24,323	285,040	555,875	1,053,328
Average Household Income	\$175,519	\$170,500	\$146,868	\$103,021
Median Household Income	\$116,332	\$111,643	\$90,828	\$59,494
Total Housing Units	15,776	104,522	234,497	612,801
Median Home Value	\$675,018	\$564,593	\$489,453	\$245,944
Bachelors Degree	38.7%	38.5%	32.2%	20.7%
Graduate Degree	39.9%	37.7%	29.1%	15.3%

Projections (2026)

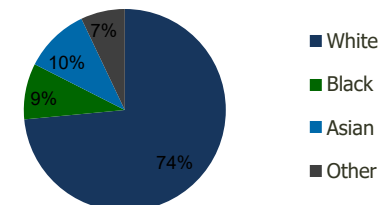
Projected Population	28,493	212,899	532,396	1,613,841
Projected 5 Year Pop Growth	0.7%	1.6%	1.1%	0.4%
Projected Households	16,316	113,671	250,341	629,542
Projected 5 Year Household Growth	0.7%	1.7%	1.3%	0.5%



Education (3-Mile)



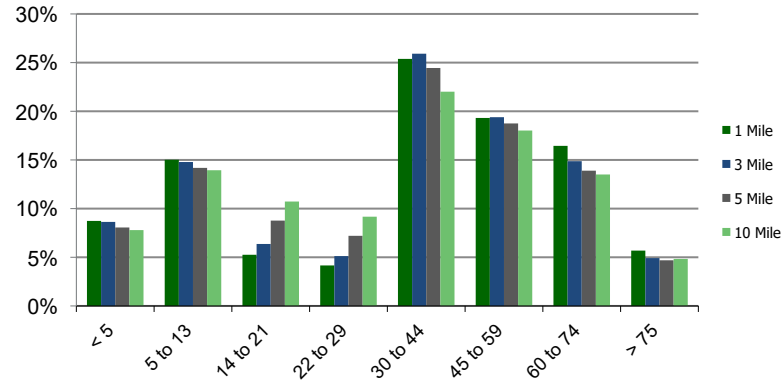
Daytime Population (3-Mile)



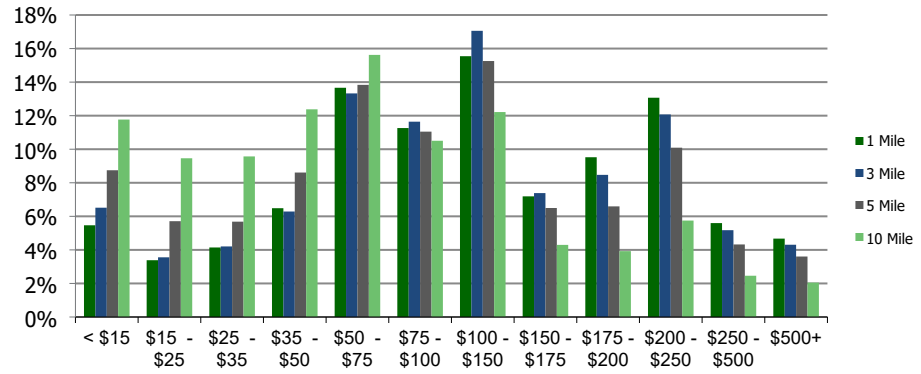
Ethnicity (3-Mile)

This report was produced using data from private and government sources deemed to be reliable and is herein provided without representation or warranty.

Population by Age Range



Household Income by Income Range (\$000)



117990-Alabama Shepherd S.C.
Houston, TX

1.00 Mile
Radius

3.00 Mile
Radius

5.00 Mile
Radius

10.00 Mile
Radius

	1.00 Mile Radius	3.00 Mile Radius	5.00 Mile Radius	10.00 Mile Radius
Population	Current Estimated Population	27,554	196,659	503,411
	2010 Census Population	24,705	156,355	426,752
	2000 Census Population	23,122	133,996	385,938
	Historical Annual Growth 2000 to 2010	0.66%	1.56%	1.01%
	Estimated Annual Growth 2010 to 2020	0.93%	1.97%	1.42%
	Projected Annual Growth 2020 to 2025	0.67%	1.60%	1.13%
Households	Current Estimated Households	15,776	104,522	234,497
	2010 Census Households	14,121	81,870	193,785
	2000 Census Households	13,289	67,166	168,560
	Historical Annual Growth 2000 to 2010	0.6%	2.0%	1.4%
	Estimated Annual Growth 2010 to 2020	0.9%	2.1%	1.6%
	Projected Annual Growth 2020 to 2025	0.7%	1.7%	1.3%
	Population per Household	1.7	1.8	2.0
Ethnicity	White	79.9%	73.5%	64.6%
	Black or African American	3.0%	9.0%	16.2%
	Asian & Pacific Islander	9.6%	10.5%	9.3%
	Other Races	7.6%	7.1%	9.8%
	Hispanic or Latino Population	13.2%	15.5%	25.0%
	Non Hispanic or Latino Population	86.8%	84.5%	75.0%

This report was produced using data from private and government sources deemed to be reliable and is herein provided without representation or warranty.