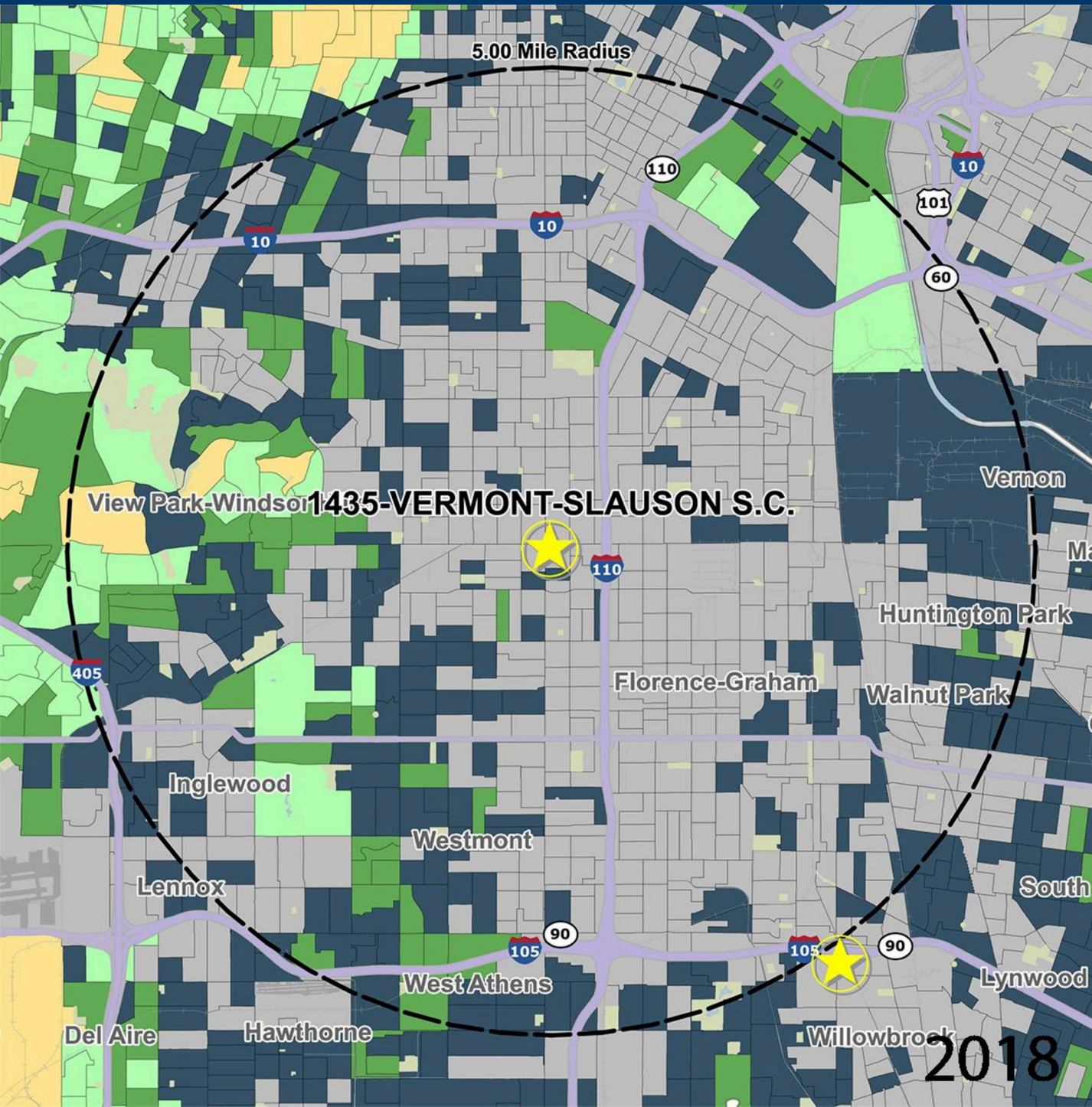


114350

VERMONT-SLAUSON S.C.

S. VERMONT AVE. & W. SLAUSON AVE., LOS ANGELES, CA

MANAGED BY AN AFFILIATE OF



DEMOGRAPHICS

2018 ESTIMATES	1-MILE	3-MILE	5-MILE
POPULATION	62,957	498,345	1,216,460
DAYTIME POP	42,095	453,792	1,279,410
HOUSEHOLDS	16,045	132,442	361,484
AVERAGE HH INCOME	\$45,604	\$49,555	\$55,279
MEDIAN HH INCOME	\$34,753	\$35,915	\$38,267
PER CAPITA INCOME	\$11,672	\$13,361	\$16,691

Trade Area Systems, Updates of 2010 Census Data by Synergis

Average Household Income by Block Group



Popstats, 4Q 2018, Trade Area Systems

2018