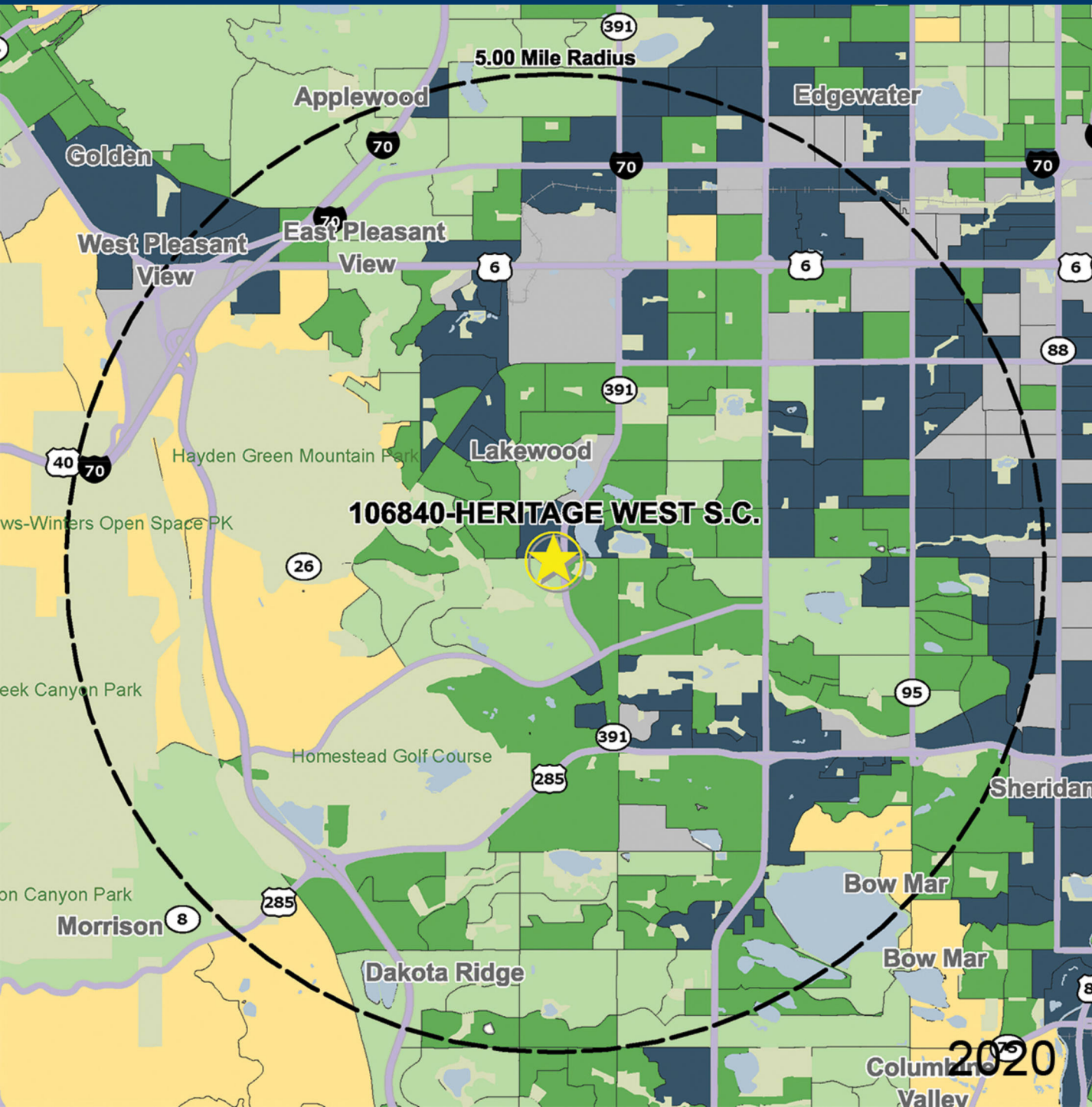


106840

# HERITAGE WEST S.C.

W. JEWEL AVE. & S. KIPLING PKWY., LAKEWOOD, CO

MANAGED BY AN AFFILIATE OF



## DEMOGRAPHICS

2020 ESTIMATES	1-MILE	3-MILE	5-MILE
POPULATION	11,033	94,512	262,754
DAYTIME POP	6,354	87,228	265,203
HOUSEHOLDS	4,693	40,486	106,242
AVERAGE HH INCOME	\$95,112	\$94,092	\$91,124
MEDIAN HH INCOME	\$77,559	\$75,673	\$71,618
PER CAPITA INCOME	\$40,458	\$40,590	\$37,120

Trade Area Systems, Updates of 2010 Census Data by Synergos

### Avg. HH Income

By Block Group

- \$150K and up
- \$100K - \$150K
- \$75K - \$100K
- \$50K - \$75K
- 0 - \$50K

Popstats, 4Q 2020, Trade Area Systems

2020  
Columbine Valley