

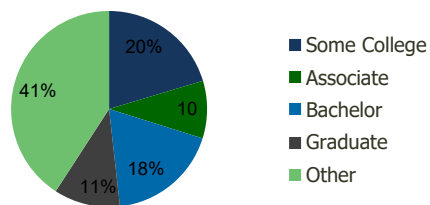
1748-Dania Pointe Dania Beach, FL	1.00 Mile Radius	3.00 Mile Radius	5.00 Mile Radius	10.00 Mile Radius
--------------------------------------	---------------------	---------------------	---------------------	----------------------

## Demographics (2018)

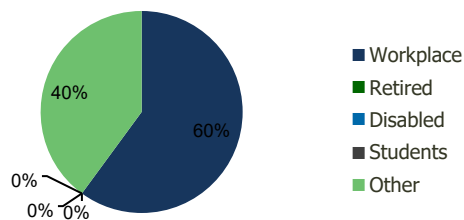
Current Population	11,907	97,641	303,404	1,214,506
Total Daytime Pop	21,812	137,233	408,679	1,380,315
Workplace Pop	15,071	82,440	213,471	608,123
Average Household Income	\$55,284	\$71,934	\$72,863	\$75,806
Median Household Income	\$41,186	\$51,782	\$50,612	\$52,406
Total Housing Units	4,626	42,454	128,485	483,342
Median Home Value	\$357,402	\$413,568	\$386,346	\$372,553
Bachelors Degree	14.9%	18.4%	18.0%	18.2%
Graduate Degree	6.8%	10.9%	9.9%	10.8%

## Projections (2023)

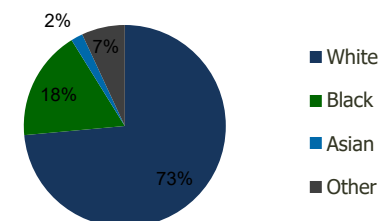
Projected Population	12,263	98,202	306,873	1,246,814
Projected 5 Year Pop Growth	0.6%	0.1%	0.2%	0.5%
Projected Households	4,755	42,673	130,244	497,016
Projected 5 Year Household Growth	0.5%	0.1%	0.3%	0.6%



Education (3-Mile)



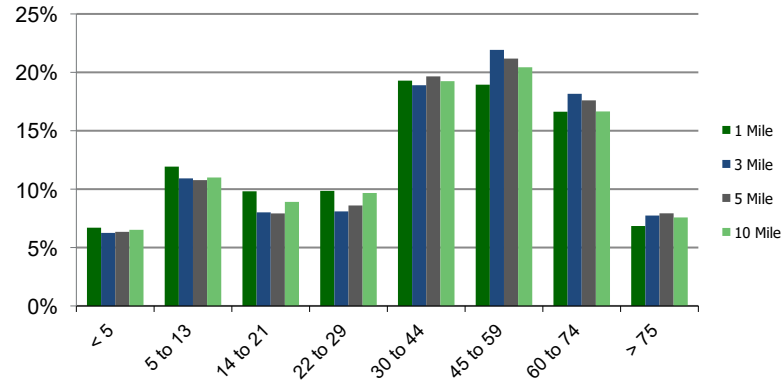
Daytime Population (3-Mile)



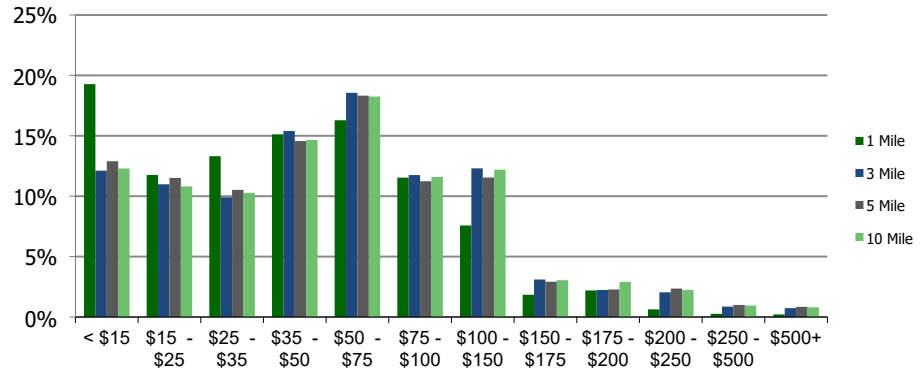
Ethnicity (3-Mile)

This report was produced using data from private and government sources deemed to be reliable and is herein provided without representation or warranty.

### Population by Age Range



### Household Income by Income Range (\$000)



### 1748-Dania Pointe

Dania Beach, FL

1.00 Mile Radius

3.00 Mile Radius

5.00 Mile Radius

10.00 Mile Radius

	1.00 Mile Radius	3.00 Mile Radius	5.00 Mile Radius	10.00 Mile Radius
<b>Population</b>				
Current Estimated Population	11,907	97,641	303,404	1,214,506
2010 Census Population	10,110	89,163	277,440	1,093,897
2000 Census Population	9,303	85,423	269,979	1,041,961
Historical Annual Growth 2000 to 2010	0.84%	0.43%	0.27%	0.49%
Estimated Annual Growth 2010 to 2012	1.89%	1.04%	1.03%	1.20%
Projected Annual Growth 2012 to 2018	0.59%	0.11%	0.23%	0.53%
<b>Households</b>				
Current Estimated Households	4,626	42,454	128,485	483,342
2010 Census Households	3,950	38,823	116,859	433,470
2000 Census Households	3,659	37,546	115,915	418,136
Historical Annual Growth 2000 to 2010	0.8%	0.3%	0.1%	0.4%
Estimated Annual Growth 2010 to 2012	1.8%	1.0%	1.1%	1.3%
Projected Annual Growth 2012 to 2018	0.5%	0.1%	0.3%	0.6%
Population per Household	2.5	2.3	2.3	2.5
<b>Ethnicity</b>				
White	45.1%	73.6%	69.2%	55.1%
Black or African American	48.6%	17.6%	20.8%	36.0%
Asian & Pacific Islander	1.3%	1.9%	2.1%	2.5%
Other Races	5.0%	6.9%	7.9%	6.4%
Hispanic or Latino Population	16.6%	25.4%	29.5%	25.3%
Non Hispanic or Latino Population	83.4%	74.6%	70.5%	74.7%

This report was produced using data from private and government sources deemed to be reliable and is herein provided without representation or warranty.